

DRAGON



USER

The independent Dragon magazine

August 1986

Contents



Editorial

Letters

Two new User Groups — a routine to change the cursor shape — questions about the Dragon Plus add on — Back issues.

People's Chart

Vote for your five favourite Dragon programs, dream up an entertaining anagram, and win £25 in software.

News

Wither Eclipse-Fenmar? — new games software on the way — 6809 Christmas Show details

Communication

Send in your questions. If we can't answer them, maybe we can find someone who can.

Dragonsoft

Two young 'uns (well, fairly) — Ruby Robba and Superbowl — and a golden oldie, Lazer Zone. We know Boy Orbaum has some weird habits, but is he getting in too deep?

Show Report

Roy Coates, who should be at home writing some more games, reports from the John Penn Dragon show at Ossett Town Hall, where he saw some new software.

Machine Code Tutor

After a month's absence, Messrs. Orbaum and Campbell proceed with flags, branches and a pot-pourri of further instructions.

2 Dragon dialects 11

Beginning a new series on language alternatives to Dragon basic, Brian Cadge looks into Pascal.

Dragon Answers 13

We have the answers — on extra graphics storage, disk interfacing, and DeltaDOS, — but what are the questions?

Screen Designer 14

Use all the Dragon's graphics and text facilities to design, save and display custom screens.

Sound Ability 21

A set of routines to make the most of the Dragon's sound capabilities — which are larger than you might think.

Sliding Graphics 23

Pam D'Arcy uses her basic to write a non-arcade graphics game, and explains the techniques as she goes.

Arcade Arena 26

Not only a map of The Dark Pit but a listing to save Total Exlipse game. We haven't tested it. This is live publishing!

Adventure Trail 28

Mike Gerrard with problems and solutions, and a closer look at Aquanaut 471.

Competition 30

Lots of little puzzles this month but you need only solve one of them to win the prize.

SUBSCRIPTIONS are still pouring into Little Newport Street, to the delight of everyone except poor Anne Marie, who has to enter all the details. Suggestions and opinions have also been pouring in. A few people who are short of money are worried about losing touch. Help your fellow Dragon-users to stay in touch by carrying the latest issue in your back pocket and whipping it out wherever Dragons gather — back issues will be available, and new subscribers are welcome at any time.

The special offer of £12 for a year's subscription continues this month, so if you know someone who missed the June issue — draw it to their attention.

This month DU begins a new series from technical maestro Brian Cadge on language alternatives to Basic, starting with Pascal, and we re-join Orbaum and Campbell in their epic trip into machine code, with a double helping to make up for last month's death.

We depend on your feedback, so write and tell us what would be useful.

Telephone number
(All departments)
01-437 4343

Editor
HELEN ARMSTRONG

Production Editor
BARBORA HÁJEK

Associate Editor
JOHN COOK

Editorial Secretary
ANNE MARIE O'DWYER

Advertisement Manager
SIMON LANGSTON

Administration
GERALDINE SMYTH

Managing Editor
PETER WORLOCK

Publishing Director
JENNY IRELAND

Subscriptions UK £14 for 12 issues
Overseas (surface) £20 for 12 issues
ISSN 0265-0177. Telex: 296275
Dragon User, 12/13 Little Newport Street,
London WC2H 7PP
US address: c/o Business Press
International, 205 East 42nd St, New York,
NY 10017
Published by Sunshine Books, Scot Press
Ltd. ©Sunshine Books 1986
Typesetting by Chesham Press, Chesham,
Bucks. Printed by Hedley Bros, Ashford, Kent.
Registered at the Post Office as a newspaper
Dragon and its logo are trademarks of
Eurohard Ltd

How to submit articles

The quality of the material we can publish in *Dragon User* each month will, to a very great extent depend on the quality of the discoveries that you can make with your Dragon. The Dragon computer was launched on to the market with a powerful version of Basic, but with very poor documentation.

Articles which are submitted to *Dragon User* for publication should not be more than 3000 words long. All submissions should be typed. Please leave wide margins and a double space between each line. Programs should, whenever possible, be computer printed on plain white paper and be accompanied by a tape of the program.

We cannot guarantee to return every submitted article or program, so please keep a copy. If you want to have your program returned you must include a stamped, addressed envelope.

More to come

I WAS disappointed to hear that the mag is going subscription only, but I understand your reasoning, and it's better to pay £12 in one go than not to buy DU at all!

I hope that your promise to 'pack even more in' means more pages.

Would you please give consideration to articles on the following: Use of Dragondos (the manual is just about useless); adding a second disk drive using one of the many cheap drives now available; OS9; Flex (especially an article by Compusense); interfacing (to robots etc) and more technical details on the hardware and circuitry.

*D. J. Barham
649 Obelisk Rise
New Boughton Green
Northampton NN2 8TG*

PS Any idea where I can get hold of a copy of the OS9 operating system? I'm getting desperate.

We would like some more news on the OS9 system ourselves. Can anyone assist?

Useful programs

OVER the years I have developed a number of short Utility programs which I have found very useful. They include an easy tape load and search program, a program to auto-run and partially protect both Basic and M/C programs — this includes a load screen designer, a program to enable you to make copies of your own autorun programs, a Merge program, for easy merging of Basic programs, a List program which by listing one line at a time and providing easy movement up and down etc, make listing easy, and a full 6809 disassembler for the Dragon.

If any of your readers would like a copy of these programs plus instruction sheets I would be glad to send them one. They should either send a tape, sae and 17p stamp to

cover photocopying or their address plus £1 to cover everything.

*Tony Sewell
44 Balfour Road
Walmer
Deal
Kent*

Add on Colour

AFTER reading the review of the Dragon Plus in the January '86 DU, I had the impression that unless one has a disk drive and wants to use Flex this expansion is of no use. Is this correct? In relation to graphics, does anyone make an add on that will give colour in PMode 4? The Dragon Plus gives 80x24 display, what effect does this have on the graphics?

*J. E. Smith
35 Bewick Crescent
Newton Aycliffe
Co Durham DL5 5LJ*

Compusense are the agents for Flex only, so they don't sell OS9. They don't do cassette based systems either, so their own software is written around the requirements of Flex. There is no software on the board itself — if you can obtain suitable software control, you can hook it up to any system. The Dragon Plus does not alter the graphics capabilities, being a text-only display.

Well Done!

I AM writing to DU to say thank you to all the staff who helped get many a delayed copy of *Total Eclipse*. Without their support many readers might not have known who to contact. I hope you print this, so that people can see, that without DU, the Dragon just could not survive.

*S. Bloomfield
14 Church Road
Great Stukeley
Huntingdon
Cambs PE17 5AL*

New Shape

IN RESPONSE to I. M. Macdonald's query as to whether or not the Dragon 32's cursor could be made to change its shape, I have written this small routine to do just that:

```
10 FOR X=&H200 TO &H215
20 READ A$
30 POKE X,VAL("&H"+A$)
40 NEXT X
50 DATA 8E, 02, 0C, BF, 01,
6B, 86, 7E, B7, 01, 6A, 39,
34, 12, 9E, 88, 86, 2A, A7,
84, 35, 92
60 EXEC 512
```

Enter the program and RUN it. As it stands, the program changes the cursor to an asterisk, but can be altered by typing: POKE &H211,ASC ("your character").

*Stuart James
34 Gainsborough Drive
Perton
Wolverhampton
WV6 7NR*

Dragon Society

I WOULD like to let Dragon User readers know about a users group I have started. It is called the Dragon and Co/Co Users Society. Members will receive a quarterly newsletter that offers hints and tips, answers to members' queries, program listings and a chance for members to get in touch with each other. Anyone joining will receive a machine code utility, to auto-run their own programs.

Membership is £1.80 a year and further information can be obtained from me at the address given.

*Kevin Coleman
164 Elms Vale Road
Dover
Kent CT17 9PN*

Correct Tips

IN THE April edition under "More Tips" there were two mistakes. The first line should

read:
20 FOR A+1 TO 18
The second was line 40 and should read:
40 SWRITE 1, 20, A, A\$, B\$
*R. Bailey (G4PPP)
52 Princess St
Chase Terrace
Staffs WS7 8JN*

Amateur Radio

I AM writing to advise you that I am organising a Dragon Amateur Radio User Group. This group will cater for licensed and listener radio amateurs and will explore the capabilities of the Dragon (both 32 and 64) in the field of amateur radio to the full. Having seen the letters following Martin Vernon's letter, I would like to say that this group will be specialised and devoted solely to amateur radio with the Dragon. I would be grateful if you would publish this short letter and anyone interested should contact me at the address below. We have already published two newsletters and the third is due out in July. The subs are £3 per annum.

*Roger Woods GW8XAN
20 Heol-ap-pryce
Yorkdale
Beddau
Pontypridd
Mid-Glam
CF38 25H*

Back Copies

WHERE and how can I buy older back issues of DU? I mean from 1984-1985.

Lots of people

We normally only have back numbers for the last six months, although if you're lucky you can find a few older issues. We ask £1.25 post paid per issue.

We can supply photocopied articles from some earlier issues for £1 per article, irrespective of length.

If we can't supply the issue or article you ask for, your order and money will be returned.

Dragon User People's Chart

THE BARONS are back — *Juxtaposition* takes the top position again after two months at number two. We have a new climber — *Bean Stalker*, and *Jet Set Willy* raises his head again.

This month's anagrams plumped for straight-down-the-line sincerity. Howsis, from Phillip Taylor? "Please choose me as I do hate cons." Would we dare? And we spy a new trend among the Speccy bashers — our first crop of anti-Amstrad sentiments! We can't print the current samples, regrettably, but it's a sure sign of the all-in-one wonder's world success. We prefer "Be beastly — get a Dragon!" from Deborah Dean, and Simon Scoltock's cry from the heart "I should be revising". But this month's prize goes to Jason Lee of Huddersfield for "Snooker Loopy mad are we, the Dragon just like me". So why didn't you vote for it, Simon?

Vote, vote, every month, for your current favourite five Dragon programs. They can be anything . . . games, utilities, what you like. Anything except the tape head cleaner. Write them in order of preference on the form printed here (or on your own paper).

Don't say we get something for nothing — £25-worth of Microdeal software will be given away to our favourite phrase, constructed from the letter in your own top three titles (use as many as you like). You don't have to include a phrase to vote, but you won't win unless you have a go!

Results July 1986

- 1 Juxtaposition..... (Wintersoft)
- 2 Bean Stalker..... (Micro Vision)
- 3 Shocktrooper (Microdeal)
- 4 Moon Cresta..... (Incentive)
- 5 Jet Set Willy..... (Software Projects)

Chart Seven

Voting for Chart No. 7 closes at 1pm on Friday, 15th August, 1986. Entries received after that time will not be eligible for inclusion in that month's voting. The editor's decision is final. Only one entry per individual per month will be allowed.

My top 5: Voting Month 7

	Name
1.....	Address.....
2.....
3.....
4.....
5.....

My phrase is:



H.C. ANDERSEN COMPUTER A/S HIGHLY RELIABLE SOFTWARE and HARDWARE

CAD DISKFIX DS80 (double sided 80 track driver and booter) upgrades your SS40 OS-9 Operating System floppy disk to a DS80 OS-9 Operating System floppy disk. Invert the drive select and you can BOOT from the new OS-9 Operating System: You have now one million byte effective disk capacity on your DRAGON and you can read and write on standard OS-9 floppy Disk.

Requirement: one 40 track (step rate 6ms) drive and one 80 track (step rate 3ms) drive. **£53.30**

CAD Patch80 will enable you to use 80 characters on stylo, rms and dynacalc, if you have installed the PLUS EXPANSION **£38.90**

Original DRAGON DATA first generation games: QUEST, EL DIABLO, BLACK SANCTUM, CALIXTO ISLAND, FLAG, DRAGON MOUNTAIN, MADNESS AND MINOTAUR.

Each **£2.40** All 7 **£9.90**

Original DRAGON DATA second generation games: GALAXIS ATTACK, STORM ARROWS, MANSION OF DOOM, FINAL COUNT DOWN, ENO STALG, FLAG, SHARK TREASURE, POSEIDON, SELECTION I, II, IV.

Each **£3.00** All 11 **£17.80**

Original DRAGON DATA third generation games: CRANKEY, SHAFT, VIKING.

Each **£4.80** All 3 **£8.70**

Original DRAGON DATA cartridge games: GHOST ATTACK, METEORIDS, ASTROBLAST, RAIL RUNNER, STARSHIP CAMELON, BERSERK, COSMIC INVADERS, CAVE HUNTER.

Each **£7.95** All 8 **£39.95**

We stock software and hardware for OS-9, FLEX and UniFLEX. Prices exclusive VAT equal 20%. 12 months guarantee on software and hardware. Postage and packing add 10% for hardware (max £20) and 5% for software. Credit by Eurocard and Mastercard or send cheque made payable to: DRAGON DISTRIBUTOR in DENMARK.

H. C. ANDERSEN COMPUTER A/S
Englandsvej 380 DK-2770 Kastrup
Telephone: 01-52 44 04 Telex: 31484

OS-9 is registered TM of MICROWAVE and MOTOROLA. USA FLEX, UniFLEX is registered TM of TECHNICAL SYSTEM CONSULTANTS. USA CAD is registered TM of H. C. ANDERSEN COMPUTER, Denmark.

** NEW ** CROSS REFERENCE LISTER for BASIC programs tape £6.50

A most useful aid to writing or changing Basic programs. Lists all line numbers referenced GOTO and GOSUB, and lists all variables alphabetically showing every reference to each. The utility can be transferred to disk.

ALLDREAM tape £12.95 cartridge £24.95 disk £19.95

A powerful text editor, assembler, dis-assembler and monitor. Great for learning machine code and developing your own programs. Disk version supports direct disk to memory assembly and disk load/save (Dragonos-Cumana 2.0).

DREAMPRT 64 character print line adaptor for above **£3.50**.

DRS — DATA RETRIEVAL SYSTEM tape £9.95 cartridge £18.00

A comprehensive database package for all types of information storage and retrieval. 100% machine code for maximum speed and storage capacity. Powerful search, edit, sort and print facilities. The tape version is transferable to disk and supports data on tape or disk. The cartridge version gives greater convenience and data storage capacity for tape based systems.

A PROGRAMMER'S GUIDE TO DRAGON DOS — This book includes details of all DOS routines useable from machine code, and much more for only **£2.50**.

AMATEUR RADIO SOFTWARE

For enthusiasts and licensed amateurs. (State callsign if any.) Reception of SSTV, RTTY, MORSE and AMTOR require a communications receiver and good aerial.

SLOW SCAN TV RECEIVE tape £10.00

Feed direct audio from radio receiver to your Dragon and receive SSTV pictures from amateurs around the world. A low cost introduction to this growing mode.

GRAPHIC GREY-LINE and MUF/LUF PREDICTOR tape £8.00

Draws a map of the world with the 'shadow area' shown for any chosen date and time. Also plots propagation prediction date in graph or map form.

RTTY (Radio Teleprinter) tape £12.00

Direct audio decoding option or use a demodulator for top performance. Receive news agencies (eg Reuter's) and amateurs. Add a tone generator for full transmit with 'type ahead' etc. User memories, QSO review and printer support.

AMTOR is a form of RTTY used by amateurs, Interpol, etc. Send an SAE for details of the world's cheapest system for full ARQ and FEC receive/send.

RTTY + ASCII + MORSE + AMTOR cartridge £59.00

Full transceive software for all these modes, in convenient cartridge form.

TONE DEMODULATOR for RTTY and MORSE £20.00

Supplied built and tested complete with a Dragon connector and lead.

MAIDENHEAD LOCATOR £5.00 MORSE TUTOR £6.50

MORSE TRANSCEIVE £10.75

All supplied with full manuals. Please add 40p p&p (£1 export)

2 Beacon Close, Seaford
East Sussex, BN25 2JZ (0323) 893378

Sun starts to shine for Eclipse?

TOTAL ECLIPSE, the vast space trader game which ran into problems on its maiden voyage, looks as though it's coming out from behind the cloud at last.

Eclipse-Fenmar chief Trevor Davies believes that every customer who contacted the company has now been sent the mark 1.3 version of the game, free of the elusive bugs which had stopped play. "To the best of my knowledge, there's nobody out there who hasn't received a game who ordered one. The Birmingham

Consumer Services Department put one more chap through to me this week."

"We were quite surprised at the public's reaction. They have stuck with us. People who were really unhappy at the time have contacted us to say how pleased they are."

"It has taken time to deal with mail because we had to let some of our staff to go, and the office is not manned full time. We also lost some mail because of this. It has really knocked us for six. I put money into it and went in over the top."

"People have asked us about our next game. We are contemplating another game, but it will take us a while to get back on our feet."

Birmingham Consumer Services confirm that Eclipse "apparently have it sorted out. They're not fly-by-nights, and I know they've been making efforts. They are still based at the same address."

The address, for anyone with further queries, is Eclipse-Fenmar, Suite 10, 4 Orphanage Road, Birmingham B24 9HS.

Total Eclipse, tipped as game of the year by DU's reviewer before the troubles, is available from Eclipse-Fenmar at £9.95, or win one in this month's Gordon Lee puzzle.

Prize Books in lieu

MELBOURNE HOUSE, who have been making efforts to find a few of the last remaining *Enter The Dragon* tapes for Dragon User's outstanding January prizewinners, have contacted us with the sad news that nobody they have spoken to has a spare tape under the counter.

Melbourne House send their apologies to all concerned, and those winners who did not receive tapes will be getting books in lieu.

Text Adventure

A NEW classic-style text adventure running under the FLEX DOS is on its way. The *Curse of Comarr* boasts 100 locations and 20-plus characters in 47k of machine code

plus 10k in the utility command space on disc. The program has a large vocabulary, and FLEX commands can be used during the course of the game.

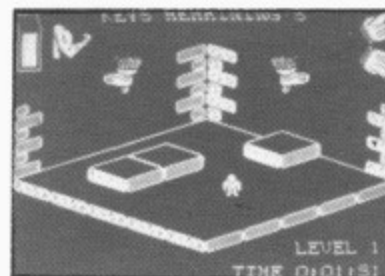
Look out for a review from Roy Coates soon. *The Curse of Comarr* can be ordered from K. Hunter, 46 Greenhill Road, Elton, Bury, Lancs BL8 2LL, for £10 post paid.

Radio Amateurs impress Blaby

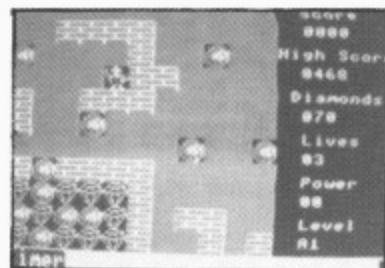
BLABY have two new games with us now and another on the way, so look out for reviews next month. *Temple of Doom*, *Boulder Crash* and *Trun* are the names to watch out for.

"The Dragon show in Manchester was very successful for us" says John Bailiss. "A comparatively small number of people came, but they're all serious Dragon people." John was impressed by some practical demonstrations of Dragon programmes being used by Radio Amateurs to send pictures by RTTY.

Dragon User would like more information on Amateur Radio software for the Dragon and Tandy micros, so if you

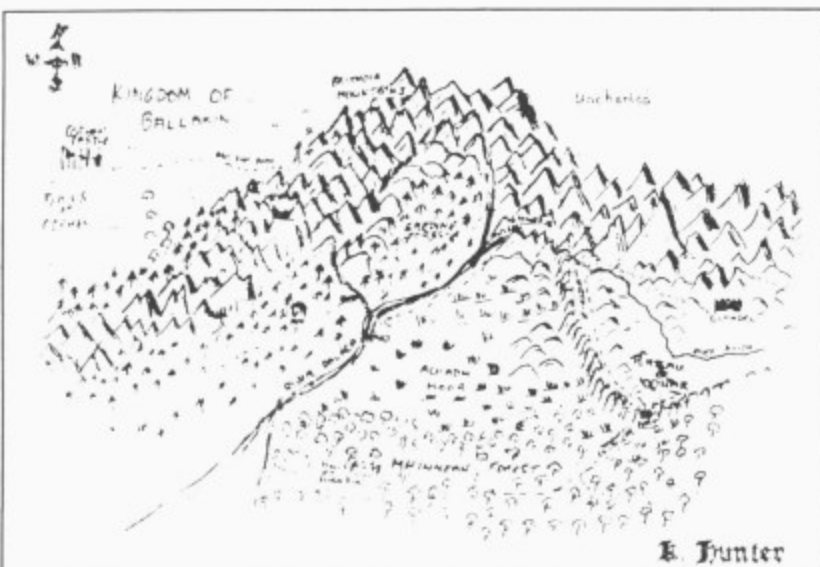


Temple of Doom



Boulder Crash

have anything to say on the subject, drop us a line.



68 Micro Group

ANY solitary hardened Dragon or Tandy CoCo hackers might be interested to hear of the 68 Micro Group — an established national club dedicated to users of all 68xx systems.

Membership includes a nicely put together A5-type journal (named 68 Microcosm), access to a library of assorted software (much of it FLEX and OS-9) and, of course, contact with other en-

thusiastic users. Perusing the April edition of 68 Microcosm showed it to be 30 pages packed with assembler and circuit diagrams, special hardware offers (how about 46 quid for a Dragon Prestel cartridge + a Modem 2000, direct Modem House?) — with four pages directly dedicated to the Dragon itself.

Although perhaps not for raw beginners, this ambitious

group (they plan to hold nationwide monthly meetings, where there is the support) is certainly worth investigating. For membership details, write to Jim Turner at 63 Millais Road, London, E11.

Xmas Show

MICRODEAL'S 6809 CHRISTMAS SHOW will be held on 22 November at the Royal Horti-

cultural Halls, Westminster, London. For more details phone Jenny Pope on 0726 6820. The Royal Horticultural Halls are within easy walking distance of Victoria Station, British Rail, and Victoria and St James Park underground stations.

Microdeal have two new games in the pipeline: *Cuthbert and the Golden Chalice*, and *Tanglewood*. No release date yet, but we hope to be reviewing these as soon as they become available.

Communication

Send in your questions, requests, and pleas to **Communication**, Dragon User, 12-13 Little Newport Street, London WC2

Problem: I want to meet any Dragon owners in the Southampton area, as I own a Dragon 32 but don't know anyone else who does.

Enquirer: Jason Coombes 52 Springfield Avenue, Holbury, Southampton SO4 1LP.

Problem: Wanted "text on hires screen" MC routine for adventure program under Cumana DOS. Can anyone help?

Enquirer: J. D. Law-Green, 1 Whitelands, Rawdon, Leeds, W. Yorks LS19 6BW.

Problem: I have Cuthbert in Space and I used the pokes (D.U. March 1986) but I still get only four lives. Help. Also I would like a Dragon owner penfriend, preferably in the Gloucester area.

Enquirer: Paul Palmer, 15 Underhill Road, Matson, Gloucester GL4 9HB.

Problem: I have a Dragon 32 with a Star Gemini 10x printer. I cannot follow the instructions for printing graphics. They read as follows: FORMAT: CHR\$(27) CHR\$(75) CHR\$(n1) CHR\$(n2) CHR\$(m1) CHR\$(m2) . . . The

number of columns to be printed is given by $n1 + 256 * n2$. There must be $n1 + 256 * n2$ characters following $n2$. So far I have failed to work out any combination of figures to give me a print out. Could anyone explain? Preferably with an example.

Enquirer: D. S. Henserson, Cumbria, Larners Drift, Toftwood, Dereham, Norfolk NR19 1LE.

Problem: I have a Dragon 32, and have some difficulty writing a program for dumping screen graphics, graphs, etc. to hard copy. I have a Brother

1009 printer. Any help would be most welcome.

Enquirer: J. Airey, 1 Sandford Avenue, Gosport, Hants PO12 2SS.

Problem: I have written a program that scrolls the screen to the left. The sprite (a spaceship) which should move up and down, left and right, using peek keys, leaves a tail behind. Could anyone give me a program to tip in Basic to relieve this problem?

Enquirer: H. Woodcock, 131 Penistone Road, Grenoside, Sheffield, S30 3QH.

Problem: I have owned a

Dragon 64 and disk drive for a year with no problems. Recently an intermittent fault has developed in my system. The symptoms are that when I type any DOS command I get an error, eg DIR or LOAD an RF error and BOOT for OS9 an NR error. The disk motor is working. I have checked my disks on another system and they are all OK. Could anyone let me know if they have had a similar problem, and do they suspect the DOS or the drive?

Enquirer: Peter Duncombe, 8 Arden Grove, Harpenden, Herts AL5 4SJ.

Communication

Stuck for a routine? Need some obscure equipment? Feeling cut off? Fear not — someone, somewhere can help you! Write down your problem on the coupon below (make it as brief and legible as possible) together with your name and address and send it to Communication, Dragon User, 12/13 Little Newport Street, London WC2H 7PP. We'll publish it as soon as we can — meanwhile, maybe there's someone you can help this month!

Problem.....

Name.....
Address.....

MAKE YOUR DRAGON USEFUL!

With our great value hardware and software deals!

CUMANA Single 40-Track Drive 180K + SHAREBOX (or similar) £209.95

CUMANA Dual 40-Track drive 360K + CASHBOX (or similar) £319.95

Price include VAT and delivery

SOFTWARE FOR DRAGON 32/64/128 AND DRAGONDOS/CUMANA DOS 2.0

Professionally written programs for home, clubs, and small business, with random access disk filing and our 42 x 24 screen with true lowercase.

MONEYBOX Personal accounts.....	£14.99
MAILBOX Mailing list	£16.99
SHAREBOX Stocks and shares.....	£16.99
SALESBOX Sales Ledger.....	£19.99
BILLSBOX Purchase Ledger	£19.99
CASHBOX Nominal Ledger	£19.99
STOCKBOX Stock control	£19.99
ORDERBOX Invoicing.....	£16.99

Cheques/POs/Further details/Dealer enquiries to:

HARRIS MICRO SOFTWARE
 49 Alexandra Road, Hounslow, Middlesex TW3 4HP. Tel: (01) 570 8335



PRINTER CONTROL

Versions available for 6, 7, 8 and 9 dot printers. Also daisywheels and electronic typewriters.

—★—★—★—★—★—

What the customers say:

"A joy to use!"

"At the price, it's a gift!"

"Why can't all utilities be this easy to operate?"

—★—★—★—★—★—

"DUMPER"

High speed — relocatable machine code program to print and magnify any or all of your hi-res screen. Accessible from your BASIC program — full instructions and examples supplied. Operates with or without DOS in any mode.

★ NEW RELEASE ★

"COLOR PRINT"

P. Mode 3, Color screen on a normal printer. Operate as DUMPER

Currently 83 different types of printer.

PRINTER CONTROL (DRAGON DOS/CUMANA) £19 + £1 p&p

PRINTER CONTROL (CASSETTE): £15 + £1 p&p
 DUMPER £5 + 50p p&p

COLOR PRINT. Most printers £6.50. All SeiKoshas, TANDY's, Smith Corona Fastext 80, Centronics GLP/HP80 £7.50. Microline 93, 82A (with APA upgrade) and NEC PC8023 B-N £8.50. Centronics 739 £10.00.

Write or telephone for free quote and advice — no obligation. All software covered by unconditional money-back guarantee!

MacGowan Consultants

6 Arnhem Drive, Caythorpe, Nr Grantham
 Lincs NG32 3DQ (0400 72085)
 REAL VALUE FOR MONEY SOFTWARE

Bowled out

Program: *Superbowl*
Supplier: Computape (Game by Cable)
Price: £2.99

LO, life in the happy land across the waters had fallen upon even harder times than when last we told of it. With the general disenchantment among the little folk with the good witch Cablette and her foiled blessing in *Zak's Son* the little folk had put away their Dragons and plugged a normal aerial in the back of their little televisions and a new craze had swept across the land.

For verily hadst the people discovered Channel 4 and found how very different it was and exciting with programs of alternative arts, and minority groups having their own programs (which did raise the

hearts of the hobbits in the land who up until then had been given a fairly hard Press by Melbourne House), and alternative sports.

They were Basketball and American football. But soon the craze didst die out for basketball, as the little folk had not the height to get the ball in the basket and so American Football became the craze.

And high in his castle among the dark mountains the evil wizard didst laugh and count his money a lot and commit all of the seven deadly sins all at once and then laugh a lot more for he had finally removed all the Dragons from the land (for lo he didst hate computers as much as happiness).

So, as you can see, things looked pretty damn bad for the little people. But then the good witch Cablette didst crack it and released a game based upon American Football, which shows a top view of players running up and down the pitch

and is generally a great idea.

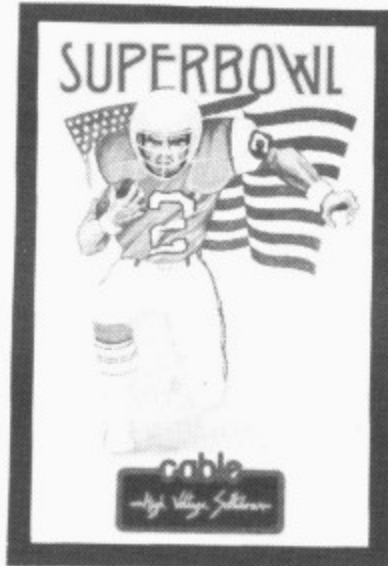
Sadly though, the good witch had had much of her energy sapped by the defeat of

couple of nanoseconds, and get bored out of their wits with it, and put their Dragons away again, and throw away the game, and go back to watching alternative arts programs.

And the good witch Cablette was banished from the land for letting the people down again. And the Dragons didst never come out again. And high in his castle the evil wizard laughed that all this had gone so well for him when he'd really had nothing to do with it. And he didst come forward and crown himself king, and his name was Cliff Sinclove.

And the morals of this tale are firstly that if no one gets their A into G about producing software then computers die, and secondly those who bring out two rubbishy games in a row can't complain about two cynical reviews.

Jason Orbaum



Zak's son by the evil wizard and so all she could produce was a game with nice smooth graphics but little else.

And lo, once again the little people didst send off for it and get all their Dragons out, and load it up, and play it for a

Old zoner

Program: *Lazer Zone*
Supplier: Microdeal
Price: (See text)

A FEW YEARS ago, when I was very young, I went round to my mate's house to see a couple of new games he had acquired for his VIC-20. One of them was *Lazer Zone*. We played it all evening and I went home in incredible envy of this game.

I can't remember why I loved this game so passionately, but it's still a good game, only let down by the graphics on the Dragon! It puts you on two axis of a grid with objects coming at the two axis. On each axis you have a gun and the idea is to blast anything that moves out of the sky (or grid). Up and down on the joystick controls the gun on the vertical axis, and left and right correspondingly move the gun on the horizontal axis. And that's about it, save a couple of rather nifty touches that raise this game from the mediocracy.

The first is that by using diagonal movement it is possible to pick an alien that has landed on a certain axis off with the other gun (does that make

sense?) This is a very difficult manoeuvre to execute involving a lot of practice to prevent suicide!

The second is that it is possible to play with two people in co-operation, one on each axis, and it's here that the game comes into its own.

The sound's great, the graphics are all right (although

I prefer black and white) and it plays fine. I have given it a rating of three but I don't know whether I found the game a let down because it has not translated well to the Dragon, or because after a very long wait I had built up my expectations too highly, so it may be worth four.

The game is well worth a

look if you can pick it up cheap somewhere (it's often going cheap at the shows) and you may find the initial passion for it that I shared. But, be warned, this is not an easy game!!

Jason Orbaum



Hooked

Program: *Ruby Robba*
Supplier: Blaby
Price: £1.99

IT HAD BEEN a hard day, outside the rain was pouring like it would never stop. God knows how long I'd been on this case. I thought it would never end. Armed guards, snakes, and rubies. They all swam round my head like it was some sort of aquarium.

I threw on my coat, missed, tried again, missed again, and then put it on properly. I'd never managed to learn that trick. I sighed.

She was there when I opened the door. A real picture of beauty. "You've got to help me!" she said, "I can't stop playing *Ruby Robba*." I sighed. I knew the symptoms, my God, I had them too.

"You want a drink?"

No reply.

"I'll get you a drink," I said. I sighed. I seemed to be doing a lot of that recently. I fixed her a gin. But when I got back into the room I found that all that was left was a faint memory of her perfume and a cassette inlay on the floor. I read it. "The object of this game is to steal the precious ruby by breaking the complex defence system guarding it."

There they were, the same old instructions. I went to the cupboard and opened it. Out fell thirty thousand *Ruby Robba* cassette inlays. There were thirty thousand others out there who were addicted.

Then I found a lead. I decided to follow it. It led to a plug stuck in a socket on the wall. Devious. And typical of the enemy. Blaby. That one word struck so much terror into the hearts of so many people. Blaby. For some it meant

cheap games. But for most it meant addiction. I decided to follow the lead the other way. . . . It led to the cassette recorder connected to my Dragon.

I sighed and loaded up the game. It loaded fast with no problems. The graphics were smooth and flicker free. The sound was great. I knew there was a connection between this and the *Boris the Bold* case that had so nearly cost me my life. I had to play. I sweated. I sighed. I sighed again for good.

I sighed. Maybe the case was unsolvable. Maybe the game was too addictive. I looked at the screen. The blue light of the portable was all that lit the apartment. I sighed, and settled down to another night's play.

Jason Orbaum



What a wonderful show!

Roy Coates at Ossett.

THE SECOND of the John Penn Dragon shows was held at Ossett Town Hall last weekend the 31st May. At first thought this seemed to be an odd choice of venue although after consulting a map it proved to be well thought out as easy access is gained from both the M62 and M1 motorways. This was borne out by the fact that there were actually people waiting outside before the show started.

It was nice to see a few new faces as well as most of the regular suppliers of Dragon hardware and software in attendance with some marvelous bargains and a very large selection of both programs and accessories for the Dragon.

Firstly (and deservedly so), John Penn had a large and well manned stand offering unbelievable discounts on a comprehensive range of Software which included both games and utilities on both cassette and disc. Compusense as always, were displaying their extensive range of both hardware and software, most of which centres around the FLEX and OS-9 operating systems, which, judging by the amount of people gathered around their stand was generating some real interest. Ted Opyrchal from Compusense was keen to stress that they are still very much dedicated to the Dragon and will be continuing to support the Dragon users as long as they exist.

Blaby (as usual) were very busy demonstrating their vast range of games software with two new releases on show, *Boulder Crash* and *The Temple of Doom* with the promise of more new titles to be released shortly.

Eclipse-Fenmar were again displaying their *Total Eclipse* program and now seem to have come through their initial bad publicity problems simply through having such a very high quality game. For those of you that have been brave enough to tackle *Total Eclipse*, I have been informed that there is a third universe to be released shortly which must make this game possibly the longest playing adventure ever written for the Dragon. Good old Peaksoft were again there to tempt us with a huge range

of accessories on show including everything from replacement power supplies through disc drives to sweat shirts. Although they do not supply software for the Dragon they probably have the largest stock of accessories for the Dragon.

Computape, which is one Dragon company that seems to be rapidly expanding, has a most comprehensive range of software at ridiculously good prices and a running battle seemed to be constantly in progress to get near enough to their stand to buy something! I must confess that they had

units as well as other software of specific interest to the amateur fraternity.

Microvision had *Beanstalker* on display as well as representing Incentive and Software Projects by displaying *Moon Cresta* and *Jet Set Willy*.

What made this show different from previous ones were the stands that weren't actually selling anything but which were demonstrating how they used the Dragon for a specific application. Three radio amateurs (GOA1Z, G4TQR and G6ZZE) had set up two Dragons at opposite ends of the demonstration hall and

from St Albans came to demonstrate how they have been using Dragons to assist in the excavating of a Roman cemetery in St Albans, the software that they have developed is very impressive and allows the accurate mapping of the graves to be excavated and also the comparison of various sites to be made by either displaying multiple maps on the graphics screen or by overlaying one on top of the other. Similar programs have also been written to allow for the precise measurement and comparison of the ceramic pots which are common to this type of site.

One of the stands had been taken by a young programmer who was exhibiting his software in the hope that it may be taken up by a software house. One of the packages that I looked at was the *Composer Companion* which co-resides with Microdeal's *Composer* package and allows musical data entry to be made via a musical stave as opposed to those awful DATA statements that make data entry and correction an appalling job. If you are interested, contact Jonathan Cartwright at Starship Software, 23 Tintern Road, Cheadle, Hulme, Cheshire SK8 7QF.

A lot of visitors to the show were bemoaning the fact that there is very little software available on disc. Having spent a tidy sum on a disc system it is rather galling when you find that you can't use it. Maybe we shall see more disc based software from now on?

From an exhibitor's point of view, one thing that struck me was that all the exhibitors seemed to know each other well and the atmosphere was a very friendly one as opposed to a competitive one. The relationship between them being more like a family instead of a business.

In conclusion, the show was a great success judging by the smiles, and each of the Distributors that I spoke to had the same thing to say, "What a wonderful show". If I have missed anyone out, my apologies, it hasn't been intentional but the show was busy and it was difficult to get around everyone.



many Dragon titles for sale which I for one had never heard of before so my wallet certainly went home relieved of some of its burden!

Smithson Computing were occupied showing off their new monthly magazine for the Dragon called *Dragon Monthly*, (ingenious title eh?), as well as their *Electronic Author* and *Gordon Bennet* programs.

Grosvenor Software had an impressive display of goodies on show which included the 'Dream' range of programs which consist of assemblers/disassemblers, word processor etc, etc, as well as their products to keep the amateur radio enthusiasts happy with RTTY units, Slow-scan TV and the software to support these

were communicating between them using a radio link on the 2 metre FM amateur radio band, with great success. What wasn't obvious was that this software is available to the general public, if you are interested contact Blaby's John Bailiss who is himself a licensed radio amateur (G1LTJ). The Dragon does seem to have become almost a 'cult' machine with radio amateurs all over the country and there are many groups who are sending software via radio on a regular basis. You do not have to be licensed to receive these transmissions but you will need a receiver capable of tuning in the VHF range at about 144Mhz.

The Verulamium Museum

Flag And Branch

Part Five of our machine code series — Jason Orbaum waves the flags.

HELLO, yes, it's me, alone again — this month talking to you about the CC flag and Branch instructions. You'll have to forgive me if I wander off the subject, it's just I'm missing Geoff and, if he's reading this, come back. And bring the disc drive with you!

First, a big thank you to a certain Mr Martyn J. Preston who writes to inform us all of where we can get the elusive Motorola specification sheet on the 6809. Apparently in the Hitachi *Semiconductor Data Book — 8/16 Bit Microcomputer* there are about 30 pages on the HD6809E and the HD6809 as well as data on the 68xx and 63xx microprocessors and 68xx peripheral chips (6821, 6840, 6850, etc). There is also, according to Martyn, some information on the HD68000. Martyn got his book from Farnell Electronic Components Limited, Canal Road, Leeds LS12 2TU. The stock number for the book is 171-360 and it should cost £7.50. Thanks again for that, Martyn.

So, on to the business in hand. This month, after last month's rather simplistic article we have aimed slightly higher. If you find the information left unexplained to a degree or you still find it too simple to read, please write and let us know at the usual magazine address.

Below is a dissection of the CC flag into its respective bits with descriptions of those immediately relevant.

The CC Register

: E : F : H : I : N : Z : V : C :

H: Half Carry

This bit is set (contains a value of 1) when the result of any mathematical calculation results in the fourth bit of the resulting byte being set. This will become clearer after next month's tutorial on additional instructions.

N: Negative

This is pretty obvious. The bit is set if the result of a mathematical operation should be negative.

Z: Parity

Set on equality, ie if the two elements of a CMP instruction are equal the Z bit will be set.

V: Overflow

Set if the result of an eight bit operation mathematical operation. This is the way that negative numbers are denoted in binary. Next month's rather lengthy article will explain both 2's complement and BCD denotation in binary. It was decided after last month it would be better to give them a miss this month and steer off the theory back into the commands and practice.

C: Carry

Set if the result of an eight bit operation causes the need for a ninth bit, ie $11111111B + 1B = 100000000B$. The result, as can be clearly seen, has nine bits. The ninth bit becomes a set carry bit in CC and the byte becomes 0B.

These then, for the moment, are the important bits in the CC flag. Let us now see their relevance to the branch instructions. The branch instructions covered here are not all of those in this month's table. However, they are the only ones you will need for now. I shall use the current situation with me and Geoff as an example for illustrative purposes.

BEQ: Geoff comes back if and only if it's on his terms.

BNE: Geoff comes back provided it's not on his terms.

This pair, as can be deduced, stand for Branch if Equal and Branch if Not Equal. they are used after arithmetic calculation (as are most of the branch instructions).

BLO: Branch if Lower: Geoff comes back if he agrees to drink less.

BLE: Branch if Less than or Equal to: Geoff comes back if he agrees to drink NO MORE than he did before.

BHI: Branch if Higher: Geoff comes back if he agrees to give me more rent than before.

BHS: Branch if Higher or Same: Geoff comes back if he agrees to give me NO LESS rent than before.

BRN: Branch Never: Geoff never comes back.

BRA: Branch Always: Geoff always comes back.

Quite quick and painful really, wasn't it! The idea is that you take this, look at the table of branch instructions, match them up, and then look at the following piece of code and work out at which lines the code will RTS for

the numbers given.

```
10 LDA #NN
20 CMA #0
30 BEQ POINT1
40 CMA #50
50 BHS POINT2
60 CMA #32
70 BLO POINT3
80 SUBA #32
90 BEQ POINT4
100 BRN POINT5
110 RTS
120 POINT1 RTS
130 POINT2 CMA #200
140 BLO POINT6
150 RTS
160 POINT3 RTS
170 POINT4 RTS
180 POINT5 RTS
190 POINT6 RTS
```

The NN in line 10 stands for a number picked from the following list. Work out where each takes the program:

100, 32, 33, 0, 232, 233, 200, 199, 50

The answers, respectively, are the following lines:

190, 170, 110, 120, 150, 150, 150, 190, 190

If you got the exercise correct then you can congratulate yourself on passing this small, but complex part of the course. And that really is it for this month. Next month Geoff gets back from holiday (yes, all that stuff about him leaving was a big joke, and boy, is he going to find it funny when he sees it in print!) and to celebrate we'll be presenting an extra long edition. So, for those of you who like to read up ahead of us next month the following interesting and varied topics will be covered:

- (1) Assembler directives (maybe, we've been promising this one for so long now that it's almost fun to not do it each month).
- (2) The differences between LBNE and BNE and other related topics, which leads nicely into
- (3) Addressing modes.
- (4) Arithmetic, complete with diagrams and tables.
- (5) BCD and 2's Complement arithmetic. All this and more that you will hardly believe! Or understand. (Cue lots of letters!!)

Branch Instructions

BCC — Branch on Carry Clear

Mnemonics: BCC & CBCC

Function: If C=0 then branch to specific point

Addressing Mode: Relative

BCS — Branch on Carry Set

Mnemonics: BCS & CBCS

Function: If C=1 then branch to a specific point

Addressing Mode: Relative

BEQ — Branch on Equal

Mnemonics: BEQ & CBEQ

Function: If Z=1 then branch to a specific point

Addressing Mode: Relative

BGE — Branch on Greater than or Equal to

Mnemonics: BGE & LBGE

Function: If (N (XOR) V) = 0 then branch to specified point

Addressing Mode: Relative
BGT — Branch on Greater Than
Mnemonics: BGT & LBGT
Function: If Z and $(N (XOR) V) = 0$ then branch to specified point
Addressing Mode: Relative
BHI — Branch on Higher
Mnemonics: BHI & LBHI
Function: If $(C \text{ or } Z) = 0$ then branch to specified point
Addressing Mode: Relative
BHS — Branch on Higher or Same
Mnemonics: BHS & LBHS
Function: If $C = 0$ then branch to specified point
Addressing Mode: Relative
BLE — Branch on Less than or Equal to
Mnemonics: BLE & LBLE
Function: If $Z \text{ or } (N (XOR) V) = 1$ then branch to specified point
Addressing Mode: Relative
BLO — Branch on Lower
Mnemonics: BLO & LBLO
Function: If $C = 1$ then branch to specified point
Addressing Mode: Relative
BLS — Branch on Lower or Same
Mnemonics: BLS & LBSL
Function: If $(C \text{ or } Z) = 1$ then branch to specified point
Addressing Mode: Relative
BLT — Branch on Less Than
Mnemonics: BLT & LBLT
Function: If $(N (XOR) V) = 1$ then branch to specified point
Addressing Mode: Relative
BMI — Branch on Minus
Mnemonics: BMI & LBMI
Function: If $N = 1$ then branch to specified point
Addressing Mode: Relative
BNE — Branch on Not Equal
Mnemonics: BNE & LBNE

Function: If $Z = 0$ then branch to specified point
Addressing Mode: Relative
BPL — Branch on Plus
Mnemonics: BPL & LBPL
Function: If $N = 0$ then branch to specified point
Addressing Mode: Relative
BRA — BRanch Always
Mnemonics: BRA & LBRA
Function: Branch to specified point
Addressing Mode: Relative
BRN — BRanch Never
Mnemonics: BRN & LBRN
Function: Branch nowhere ever! (This is only included for symmetry.)
Addressing Mode: Relative
BSR — Branch to SubRoutines
Mnemonics: BSR & LBSR
Function: Branch to specified address leaving present location on system stack S
Addressing Mode: Relative
BVC — Branch on oVerflow Clear
Mnemonics: BVC & LBVC
Function: If $V = 0$ then branch to specified point
Addressing Mode: Relative
BUS — Branch on oVerflow Set
Mnemonics: BUS & LBUS
Function: If $V = 1$ then branch to specified point
Addressing Mode: Relative
JMP — JuMP
Mnemonic: JMP
Function: Jump to specified point
Addressing Modes: Extended
 Directed
 Indexed
JSR — Jump to SubRoutine
Mnemonic: JSR
Function: Jump to subroutine at specified point leaving current address on system stack S
Addressing Modes: Extended
 Directed
 Indexed

Addressing Modes

Part six follows fast, with Geoff Campbell on the spot.

JASON presented a piece of prose designed to explain the intricacies of the various branch instructions, and I for one think it was about as clear as mud. Still it should become clear in time. As the brave man wrote that entire section all on his own, I thought it was time we had a column devoted to doing what we set out to do — ie to teach others to program a computer. To this end, I have chained him up outside and taken over. I will cover a few subjects related to the branch instruction, some more on computer arithmetic, and an introduction to the various addressing modes, or ways of accessing information, that the processor had.

First a subject that was at one time regarded as the most important in computer science, that of decimal representation of numbers. It is possible, and indeed most

efficient, to work entirely in binary, but remember that other people will be using your programs when they are finished, and there are very few businessmen, shopkeepers, personnel managers (or, in short, people) who are fluent with the binary number system, so any numerical results from a program must be displayed in decimal. The most efficient method of doing this depends on the application of the program. For a program with a lot of calculations and little result display, it is most efficient to hold the numbers internally as binary, and convert them to decimal when they are displayed. This is quite straightforward, and we will present a routine to do so later.

There are other cases, though, where this will not be the most efficient method, in terms of speed if not storage. If a program is

doing a lot of displaying of decimal numbers, but very few calculations, as in the vast number of databases currently in use, it may be easier to store the numbers as decimal. Yes, I know we are not supposed to be able to do that in a binary computer, but this is where we start to cheat slightly (but only slightly), and introduce a new concept called Binary Code Decimal, or BCD for the lazy ones among us. BCD is very simple in principle, and is in fact not dissimilar to hex in practice.

Binary code decimal

Just as, in hex, each nibble represents one digit between 0 and F, in BCD each nibble represents a digit between 0 and 9. It is therefore fairly easy to see that a single byte is limited to a maximum value of 99.

This is no problem, because we can easily string together as many bytes as we like. When it comes to displaying the number, it is fairly simple to mask off the relevant nibble, and display an ASCII character. We will be presenting an article in the not too far distant future with a collection of small but useful routines, and this will hopefully include a set of BCD arithmetic subroutines (if I get round to writing them . . .).

There is a slight variation on the BCD principle which I have never seen anyone else use, which is to have just one digit per byte. While this takes up twice the storage, it does allow for very fast addition, subtraction, and display, and the digits can be held as ASCII (30H to 39H) rather than straight binary, allowing the display routine to simply copy them directly to the screen. This is very useful for applications like game score displays, although not so good for general calculations.

Another problem with conversion from decimal to binary is that of negative numbers. Negative numbers are often taken for granted, but they are in fact one of the most abstract concepts employed by the human race. Abstract concepts and computers normally mix like oil and water, but for once there is a reasonable easy solution to the problem.

If we consider a single word within the computer (although the principle applies across the board), we would normally expect to be able to hold a number from 0 to 65535 (a number that will fairly soon be engraved on your memory!).

Negative numbers

If, on the other hand, we sacrifice the most significant bit (the left-hand one) to represent either positive (set to zero) or negative (set to one), we end up with a range from 32767 (7fffH or 0111111111111111b) to -32768 (8000H or 1000000000000000b). This we have already touched on, and is fairly straightforward. What is a little less obvious is how to convert from negative decimal to binary and back again. For example, how about -53? It is actually a fairly simple process. First, convert the number to binary, ignoring the minus sign. This gives 00110101b (using a byte 'cos it means less typing). Next find the one's complement of this number (in other words, convert the ones to zeros and vice versa. This is easiest done in assembler by exclusive oring with ffH), giving 11001010b. Then add one, giving, in this case, 11001011b. This, I sincerely hope, is the binary equivalent of -53. To convert back, the process is exactly opposite.

Now a quick jump back to the test of branch instructions. Normally, branches the method outlined above for negative number, using the byte following the branch as an addition to the current PC value, giving a range of 127 to -128 bytes (NB from the start of the FOLLOWING instruction). There is a special case, however, whereby the branch is prefixed by the letter L, making it a long branch. The range is now 32767 or -32768, or, in other words, the entire memory map. This applies to any

branch instruction available. Do not lose any sleep over calculating lengths of offsets for branches, because (a) it will make no difference if a long branch is used for a jump of 10 bytes, except using up an extra byte of RAM, and (b) the assembler will pick out any short branches that should be long branches. As a rule of thumb, use short branches throughout, and change any that the assembler throws out to long branches.

Now, after that nice easy start something to get you thinking (maybe — I was not thinking when I wrote it). Addressing modes. Just those two words have been known to make strong men weep, although it is in fact a fairly simple subject. I will cover the basics this month, and get more complex as and when we use them in routines.

Addressing modes

The addressing mode of an instruction is used by the 6809 to determine where to pick up or place the data for that instruction. The 6809 has a larger and more complex range of these modes than almost any other chip, barring some of the bigger sixteen and thirty-two bit monsters. I will cover each mode and its uses, although not all instructions can be used for all addressing modes. As we cover each instruction, the range of available addressing for that instruction will be given. The addressing modes are as follows:

Inherent Not an addressing mode as such, this means that all necessary information is included within the instruction itself. This covers instructions like INCA, which adds one to (increments) the A register.

Immediate In this case, the required data is taken from the byte (or word) following the op-code. This has the advantage of speed of execution, as the source address has already been calculated, and is in the PC register. This is common to most other processors, but, as we will cover later, the 6809 is unique in allowing the programmer to access these address calculations, and use them to produce TOTALLY relocable code and data (try that on your 6502!!). This can be fairly complex, so we will devote an article to it. In assembler source code, immediate data is always prefixed by the # symbol, as in ADDA #10, which adds ten to the A register.

Extended (or absolute) Possibly the most commonly used mode, this uses the word following the op-code as an address from which to gather the data (or as an address to which to write the data). In the source code, this is shown as a number with no prefix, or, more commonly, as a label. (For example, LDA 32767 would load the A register with the value stored at address 32767, but LDA SCORE is much clearer, SCORE having been previously defined by use of one of the assembler directives that we might cover next month.

Direct This is much the same as Extended, but uses a single byte following the op-code as the low byte of the address, and the contents of the DP register as the high byte. This is quicker to execute, and takes up a byte less storage, making it ideal for

applications where there is a lot of data in a 256 byte area. Can be tricky making sure the DP register has the right value in without wasting more store than you save.

Relative Used (to the best of my knowledge) exclusively for branches, jumps and calls, relative addressing uses the contents of the byte or word following the op-code, plus the contents of the PC register, to calculate the address, which is normally then transferred back into the PC register. Again, this can be used to make code totally relocatable, but more of that later. At the source code level, this simply means that all that is specified is the target address, and the assembler will calculate the offset needed.

Indexed Again, with indexed addressing, the 6809 stands head and shoulders above a lot of other processors, in that it has two sixteen bit index registers, allowing access to the entire memory map without having to worry about base addresses. With this mode, the processor calculates the address from the word following the op-code, plus the contents of the specified index register (either X or Y). For example, LDA 1000, X will, if the X register contains 24, load the A register with the contents of location 1024, or the first byte on the text screen. This in itself is very handy, but there's more! If the register name is preceded or followed by either one or two pluses or minuses, the processor will use either auto increment or auto decrement modes, which means that, for example, LDA 1000, X+ will, if X contains 24 as previously, load the first byte of the text screen into A, then increment the X register, leaving it containing 25. Conversely, LDA 1000, -X will increment the X register first, loading A with the contents of the second byte on the text screen, and the X register containing 25. This is incredibly useful for accessing tables of information, clearing screens, and about a million and one other things.

Indirect When an indirect instruction is issued, the target (or source) address is the contents of the address contained in the word following the op-code. This is useful for things like tables of jump vectors. For example, a program might display a menu of options, accept a number for the user, multiply it by two (as each address takes up two bytes) placing the result in the X register, and then use an instruction like CALL (JMPVCT, X). Note the combination of addressing modes here. This is actually indexed indirect, and the combination of modes can get quite stunning, as it is also possible to use auto increment et al. Indirect on its own is not much use, although it is possible to find situations where it could be used. However, for each such situation, it is generally possible to find a more efficient method of gaining the same results.

Well, that about wraps it up. Sorry about the lack of assembler directives (again!) but they are coming soon. Next month, among the excuses for the lack of assembler directives, we (yes, we — Jason will be working again if I can think up a dire enough threat) will cover some more computer arithmetic.

Dragon dialects

Brian Cadge grabs his phrasebook and learns to parlez Pascal.

IN THIS new series of articles we will be taking a look at some of the various languages available for the Dragon computers as alternatives to the built-in Basic.

This month we start off by looking at the language Pascal. For the purposes of this article I used Lucidata Pascal from Compusense which runs under the Flex operating system. Pascal was developed as a general purpose educational language by Nik Wirth in the late 1960's. Wirth intended Pascal to be used to teach structured systematic programming and hence the basis of the language is tailored to this style of programming.

The "Basic" approach to programming — that is given a problem, sit down at the keyboard and write a program, attempts to solve the problem by a mixture of inspiration and a lot of trial and error. While this approach can work for relatively very simple problems, it is entirely inadequate for finding solutions to programs of any real complexity. What is needed is a systematic approach to the problem, breaking it down into smaller and smaller steps until each step has a straight forward programming solution. This, basically, is the theory behind "structured programming".

Before diving into the realms of the language, take a look at the (very simple) complete Pascal program shown in **figure 1**.

Basic structure

This shows the basic structure of a Pascal program. In this example, I have shown Pascal commands in uppercase and variables in lowercase for clarity — Pascal makes no distinction between upper and lowercase (although Lucidata Pascal does have the facility to do this).

The first line in a Pascal program always gives the name of the program (factors) optionally followed by the files to be used — here only the default keyboard and screen are used (Input and Output). Following this come constant, type, variable, procedure and function definitions. In the example program there are no constants, procedures or functions so only the variables used need be declared after the "VAR" command. Variable declaration before use is an important element of structured programming, implicit declaration is not allowed. We shall see later that there is a lot more to Pascal variables than it at first may seem.

Programs are made up of "blocks" of code — the whole program is the outer, top level block, next come procedures and functions, followed by procedures within procedures and so on. The lowest level block is an actual series of statements enclosed between the keywords "BEGIN" and "END". Pascal does not use line

```
PROGRAM factors (INPUT,OUTPUT);  
  
VAR number, divisor, numofdivs : INTEGER;  
  
BEGIN  
  WRITE('Enter a number between 2 and 999: '); READ(number);  
  WRITELN; WRITELN('Factors of ',number:4,' are:');  
  numofdivs := 0;  
  divisor := 0;  
  WHILE divisor <= number DIV 2 DO  
    BEGIN  
      IF number MOD divisor = 0  
      THEN BEGIN  
        WRITELN(divisor:3, number DIV divisor:4);  
        numofdivs := numofdivs+1  
      END;  
      divisor := divisor+1  
    END;  
  WRITELN;  
  IF numofdivs > 0  
  THEN WRITELN(numofdivs:4, ' divisors found')  
  ELSE WRITELN('No divisors found - ',number:3, ' is prime')  
END.
```

Figure 1: A simple Pascal program.

numbers and the semicolons are only used to separate commands for the compiler (they are not the same as colons in Basic). Therefore, with an IF-THEN for example, if more than one command follows the THEN part then they must be enclosed in BEGIN-END as shown in the Factors program.

Block nesting can be taken to any reasonable level, in this program there are only three levels — the main program block, the WHILE loop block and the IF-THEN block. Blocks can be thought of as representing the simplification of a problem into smaller and smaller parts.

Anything to declare?

Pascal is an example of a "strongly typed" language. What this means is that all variables must be declared together with their type before being used. Operations that can be performed on one type cannot be performed on another. Special exceptions to this are the so-called "overloaded" operators (such as "+" and "*") which can operate on a variety of types (such as integer and floating point).

Basic has only two built-in types, these are numeric (floating point) and string (character). Pascal has 4 simple types built-in, these are "integer" (16-bit numbers), "real" (floating point), "char" (single ascii character), and "boolean" (true or false).

Lucidata Pascal also has the additional simple types "byte" for byte integers and "alfa" for a string of eight characters. For efficient programs it is obviously necessary to use the most appropriate "type" of variable, integer arithmetic is a lot faster than using floating point for example.

Define your types

As well as the simple built-in types, Pascal allows you to define your own types to a limited extent. Often it may be necessary to deal with entities in programs (such as colours for example). In Basic we might use a series of variables assigned; RED=1: YELLOW=2: GREEN=3 and so on. Then within the program we can say; IF PAIN=RED THEN ... This is an example

```
CONST maxnamelen = 10;  
      maxorders = 250;  
  
TYPE name = PACKED ARRAY [1..maxnamelen] OF CHAR;  
      order = RECORD  
        customer : name;  
        partno, quantity : INTEGER;  
        price : REAL;  
        instock : BOOLEAN  
      END;  
      daybook = ARRAY [1..maxorders] OF order;  
  
VAR todaysorders : daybook;  
    ordfile : FILE OF order;
```

Figure 2: Pascal type definitions

of an "enumerated" type in Pascal. The equivalent would be declared as ;

```
TYPE COLOURS = (RED,  
YELLOW, GREEN);  
VAR PAINT : COLOURS;
```

The advantage in Pascal is that the variable "paint" can only take the values red, yellow and green and not just any numeric value as in Basic. Also you are prevented from performing arithmetic on enumerated types.

Record definitions

Pascal, like Basic, has multidimension arrays of any type. Unlike Basic the array is not the only data structure available to us. One of the most powerful features of Pascal is its "record" definitions. A record is a data structure consisting of a fixed number of components of various types. For example, if we needed to deal with "customer orders" which consisted of customer name, part number, quantity, price etc. Then in Basic the only solution would be several arrays such as NAME\$, PART, QUANTITY etc. In Pascal a record type could be defined followed by an array of these records. **Figure 2** is an example of this type of definition, which also shows the use of constants in definitions.

"Order" is defined as a record type which consists of the elements mentioned previously. The type "Daybook" is then defined as an array of order records. Note that type definitions do not declare variables, only types of variables — it is then necessary to declare a variable such as "todaysorders" of the type "daybook". "Ordfile" declares a filetype consisting of orders so that todaysorders may be read and written to disk as whole records.

To access a particular field of a record we use, for example:

```
todaysorders[5].partno := 88;
```

That is, the record name followed by a fullstop, followed by the field name. Some versions of Pascal allow the following type of command:

Figure 3: Variable scopes and bindings.

```
PROGRAM xxx;  
  
VAR main : INTEGER;  
  
PROCEDURE p (param:INTEGER);  
VAR localp : INTEGER;  
    flagp : BOOLEAN;  
  
    PROCEDURE q (main:BOOLEAN);  
    VAR localq : INTEGER;  
    BEGIN (* q *)  
        main:=TRUE;  
        localq:=1;  
        localp:=10  
    END;  
  
    BEGIN (* p *)  
        q(flagp)  
    END;  
  
    BEGIN (* main program *)  
        main:=1; p(main)  
    END.
```

```
WITH todaysorders[5] DO BEGIN  
partno:=88; price:=1.08 END;
```

This saves the programmer from having to type todays orders[5] before each field name of a particular record. Although this is a very useful function, Lucidata pascal does not support it.

As mentioned earlier, Pascal is a block structured language, hence procedures may be declared and may be nested. The Basic "GOSUB" can be thought of as a very simple equivalent to the Pascal procedure. I will only deal with procedures here, but Pascal functions can be thought of as procedures which return values — procedures are called as new commands, functions are called as expressions; X:=F(S).

In Basic, a variable may be used at any point in the program and there is only ever one "version" of a particular variable. In Pascal, variables (or more formally "identifiers") have what's known as "scope", "binding" and "environments". A procedure may use its own variable which are not accessible by any other part of the program and whose values are not kept between calls to the procedure, these are known as "local" variables. Local variables may have the same name as variables in the main program ("global" variables) or as local variables in other procedures. Pascal allows recursion by the use of local variables — a new version of the variables is instantiated for each recursive call of the procedure.

The "scope" of a variable is that part of a program in which it may be accessed. When a variable name appears more than once, for example as a global variable and a local variable in a procedure, it is said to be "bound" to the current block. The variable exists only as long as the block in which it is declared is active. The environment of a block is the surrounding blocks in which it may access variables. The environments of all procedures include the main program (as this encloses all procedures), and also includes any procedures which enclose the procedure in the program text.

To clarify all this, take a look at **figure 3**, this is a completely useless Pascal program, but demonstrates the various scopes etc of variables.

Binding declaration

Here the variable "main" is declared as a global integer variable and as a local (boolean) variable for the procedure "Q" — it is declared as the parameter passed to "Q". Hence, when the procedure "Q" is entered, "main" receives a new "binding" to the boolean value and the global value of "main" cannot be accessed within "Q". When "Q" ends, "main" restores its binding to the global integer value.

"Localq" is a local variable of the procedure "Q" and so cannot be accessed by any other part of the program. Similarly, "Localp" is a local variable of procedure "P", but as procedure Q's environment includes procedure "P" (it is enclosed by it) it may access P's local variables. Notice that the main program can call procedure P, but cannot call procedure Q directly (it

surrounds P, but does not directly surround Q).

All this binding, environments and scopes may seem confusing at first, but with a little practice you'll wonder how you ever coped with Basic's variables.

I can only begin to touch on some of the many features of Pascal in an article of this size, there hasn't been room to mention the "heap" and pointer variables, but it is worth mentioning some of the particular features of Lucidata Pascal. Programs are written as standard text files onto a Flex disc, then compiled into a "P-code" binary file. P-codes are opcodes for a theoretical computer which the runtime program interprets and executes. The result is an impressively fast program which is stored more compactly on disc than stand alone machine code. My only complaint is that the compiler does not recover well from program errors when compiling; once the initial error has been reported a large number of spurious error messages may appear before the compiler gets back on the "right track". There are plenty of standard methods for error recovery in compilers (such as Turner's Algorithm) and it's a pity that Lucidata do not seem to have used one.

Lucidata Pascal

Lucidata Pascal has a number of very useful string handling procedures predefined for the programmer (strings are traditionally the most weak area of Pascal) as well as some sophisticated file handling commands to access both sequential and random access Flex files. A potentially very useful feature is the "overlay" procedure which allows very large programs to be run by swapping in and out blocks of code during execution.

The accompanying manual gives a summary of all the features available and plenty of detail on non-standard additions to the language. There is also a large section on the internal implementation of the software to allow you to customise the run-time system by adding new built-in procedures (commands) etc. This section is certainly not for the novice and some knowledge of compiler construction is useful here.

In all important respects Lucidata Pascal conforms to the ISO Pascal Standard and most textbook programs will run without change. A number of demonstration programs are included on the disk, these are all rather elementary but do demonstrate some of the unique features of the implementation.

If this has whetted your appetite for more then there are plenty of books to be found on the Pascal Language. A few of the better ones to look out for are as follows:
PASCAL, An Introduction to Methodical Programming by Findlay and Watt.
PASCAL User Manual by Jensen and Wirth.
Programming in PASCAL by Peter Grogono.

System used: LUCIDATA PASCAL from Compusense — £90.
Requires: FLEX operating System (64K — Minimum 1 Disk Drive).

If you've got a technical question write to Brian Cadge. Please do not send a SAE as Brian cannot guarantee to answer individual inquiries.

Dragon Answers

THE CHANGE of style this month is not a new format — it's thanks to the Postie, who seems to have swallowed Brian Cadge's communique. Brian's faithful Dragon coughed up another copy of Dragon Answers, but not copies, alas, of the original questions. Brian has written a summary of the questions from memory — we hope you recognise your own problems!

Delta DOS

I HAVE a Dragon and Delta DOS and have transferred much of my software to disc. However, some games will not run if Delta is attached even though I can load them from disc and then relocate them. Is it possible to switch out Delta once the software has loaded from disc?

Andie Warner

IF YOU add the following lines of assembly language to your routine to relocate code it should allow most programs to run as if Delta Dos was not attached.

```
LDX #40253
STX 269
LDX #46185
STX 272
LDA #57
STA 377
```

What this does is to reset the Interrupt vectors and also stops Delta from intercepting commands.

Interface

I'VE recently obtained a Tandy Coco disc drive and interface. Unfortunately, the interface does not seem to work with my Dragon. Is there a simple way of making it compatible, and if not where can I get a suitable controller?

Adrian Rothery

THE TANDY disc interface is certainly not compatible with the Dragon and there is no simple way to remedy this (you would have to change the ROM software to operate the cartridge with the Dragon).

However, Tandy disc drives are otherwise standard 5-inch drives and can be used with any suitable Dragon disc interface. Try contacting PNP Communica-



tions on 0273 514465, they can supply DragonDOS compatible controllers for £70.

Extra RAM

I HAVE had a Dragon 64 for a couple of years and would like to know if it is possible to use the extra 32K of RAM to store graphics screens, when in 32K mode (with DragonDOS).

Is this possible from Basic as I am a complete novice when it comes to machine code?

Gary Bell

TO USE the extra RAM for this purpose is not possible directly from Basic, however the program listed below will allow you to save and retrieve screens using the USR command from basic.

The routine automatically looks at the current graphics mode — where it starts and how much RAM is used and transfers this to the extra RAM at the offset given in the USR command. USR0 is used to store the screen, USR1 to retrieve it. There's room for 5 PMODE 3/4 screens or 10 PMODE 1/2 screens or a mixture of both. For example, to save a screen on display, at an offset of 6K in the extra RAM use X=USR0(6144), and then to retrieve it later use X=USR1(6144). The offset should be in the range 0 to 29400.

```
10 ,SAVE/LOAD GRAPHICS FOR 64K
20 CLEAR 200,32700
30 FOR I=32701 TO 32746:READ AS:POKE I,VAL("&H"+AS):NEXT
40 DEF USR0=32701:DEF USR1=32718
```

```
50 DATA 8D, 1C, A6, A0, A7, 80, 10, 9C, B7, 25, F7, B7, FF, DE, 1C, EF, 39
```

```
60 DATA 8D, 0B, A, 80, A7, A0, 10, 9C, B7, 25, F7, 20, ED, BD, 8B, 29, 8A
```

```
70 DATA 80, 1F, 01, 10, 9E, BA, 1A, 10, B7, FF, DF, 39
```

Graphics

I HAVE been mucking about with the Dragon's semi-graphics modes. Could you please tell me how I can implement these modes while using my Cumana drive without corrupting the disk workspace.

J. H. Plester
47 Easington Road
Banbury
Oxon
OX16 9HJ

THE easiest way to set up the start address of the screen display is to use the normal Dragon Basic commands PMODE and SCREEN, followed by pokes to set up the semi-graphics mode. For example, to set up mode 24 starting at the first graphics page you could use the following lines:

```
10 PMODE 4,1:SCREEN 1,0
20 POKE &HFF22, (PEEK(&HFF22) AND 7)
```

New line

I HAVE recently obtained a printer for my Dragon computer, but when I list a program all I get is a one long string of output — how can I make the printer start a new line at the every listed line?

K. Moss

THIS question appears more regularly than most others (it's even more popular than the 'speed-up poke'), but is worth repeating

occasionally for the benefit of new readers. The solution is to type the following immediately after powering up your Dragon:

```
POKE 155,80 (or 40 — number chars per line)
```

```
POKE 328,255:POKE 330,2
```

If this causes a blank line between each listed line then miss out the POKE 330,2. If this still doesn't work then POKE loc 331 with your printers' code for carriage return and loc 332 with the code for linefeed.

Routines

I AM trying to add some new commands to Basic and want to make use of some of the routines in the Delta DOS ROM. Can you tell me where I can obtain details of these routines?

K. McCandlish

TO MY knowledge the routine documentation for Delta/Cumana DOS has not been published and I have very little information on this DOS. Perhaps one of our readers has worked through the ROM and could help Mr McCandlish?

'Windows' solution

OVER a year after the 'Dragon Windows' program was published (July 1985) I am still getting letters about it so can I take this opportunity to answer all the queries in one go!

Due to a minor bug in the listing the program may occasionally crash on some machines. The solution is to add the following line to the Basic loader program:

```
6 POKE 31814,142
```

'Windows' cannot be used in 64K mode on a Dragon 64 as it uses a number of ROM calls, but will operate in 32K mode. Finally, many people have asked about using the software with DragonDOS. There is no simple way of changing the loader to operate with DragonDOS; a disk version has been written but this is a completely rewritten version and is not due to be published in Dragon User.

Screen Designer

Dennis Riley text, colour and graphics to create designer screens.

THANKS TO ALL of the recent articles on machine coding, in particular the "Firmware" series, in *Dragon User*, I now find that programs in machine code are getting easier to write successfully. However, this left the problem of wanting programs to Auto-run, fortunately solved by Brian Cadge (*Dragon Answers* Aug '85), and to displaying a customised screen while loading. Hence Screen Designer.

Screen Designer allows a text screen to be built up using all of the graphics characters, colours and the majority of the text characters (some are used as function keys). A screen may be saved and re-loaded so that it may be re-used or modified. Text, colours and graphics characters can be edited and manipulated on screen to produce the desired effect. A program can be saved and made to Auto-run, displaying the screen created, and the program secured, in that pressing RESET will re-execute the program.

Entering the program

Two methods to enter the program are given. **Listing 1** gives a listing of the machine code which can be poked into memory, using the Basic loader provided (**listing 3**), which will allow you to enter the code in stages. Just enter as much as you like and CSAVE, then on re-starting CLOADM and continue from where you left off.

Listing 2 gives the Alldream assembler listing. It will be noticed from this listing that the program starts with a short piece of code which relocates the program to its workspace at loc 30001, this has been included as an example, the need for which will be given later.

When the program has been successfully entered save the program using:

```
CSAVEM "DESIGNER", &H0600, &H0CC1, &H0600
```

The program can now be run using:
CLOADM "DESIGNER": EXEC

Program operation

On running the program a Menu of options is given.

1) **Create Screen** This option is used to build up the required text screen and uses a number of function keys. On entering this option you will be faced with a green screen with a flashing cursor in the top left hand corner. Green is the default background colour (this is Graphics Green Code 143 and not text Green Code 32), this colour can be changed using the "\$" key, by pressing the "\$" key the colour will change for each press, and with the exception of the black screen a cursor will again appear, when text or a character is entered on to the screen or the cursor is moved.

The cursor can be positioned anywhere on the screen, without destroying existing text or characters, by using the arrow keys.

Auto-repeat is incorporated into the program to facilitate movement of the cursor and entering text or characters.

Text can be entered on to the screen as normal and deleted using the CLEAR key, it will be noticed that both the CLEAR key and SPACEBAR take on the background colour.

Graphics Characters are placed on the screen, under the cursor, using the "@" key; repeated pressing of this key will change the character shape.

The colour of the character under the cursor can be changed using Shift "@", again repeated pressing will change the colour, and the selected colour will remain in operation until altered.

Both the character shape and the colour are stored into memory, and can be repeated any where on the screen using the "+" key, here the auto-repeat makes light work of borders, though these are best left until last.

To help in the design of the screen there are six scrolling functions, the Shift arrow keys will scroll the whole screen in the appropriate direction and by using the ">" and "<" keys the individual line containing the cursor can be scrolled left or right.

Colour

The colour of all of the characters on screen can be altered using the "&" key, without affecting any text. However, as the colour of the space and delete will still be the original background colour, the use of this function is best left until a screen is completed.

The final function uses the "%" key and this will invert the character under the cursor, to obtain characters not normally available from the keyboard, i.e. inverse numerals.

The BREAK key will return to the Menu, and as the screen is saved to memory, obviously any previous screen will be lost.

2) **Display Screen** This option will display the screen held in memory, either one that is being worked on or one that has been loaded into memory. All of the described functions apply to this option.

3) **Save Screen** Here a screen can be saved to tape, and therefore a library of screens can be built up, or an unfinished screen can be saved for future work to be done on it.

4) **Load Screen** Loads a previously saved screen back into memory, together with the original background colour and the last character colour used, for use with the spacebar and delete.

Options 6 and 7 turn the motor on and off respectively, this is to allow for the cleaning and/or positioning of tapes. The BREAK key used from menu will return to basic.

Auto-running

Option 5 will convert a machine code

program into one that will Auto-run and will display the screen chosen while loading. There are, however, some very important conditions which must be met for this to be successful.

The source program must have been saved using:

```
CSAVEM "TITLE", N1, N2, N3
```

Where:

N1 is the start address of &H0600. Programs must start at this address. Any program needing a higher workspace can be relocated using a similar method to the example given.

N2 is the end address of the program while in the graphics area.

Most importantly N3 is the address from which the source program is to be executed (EXED'd) when it is in its required workspace, even if this means that the EXEC address is higher than the end address. If N3 points to some other address it may result in the program crashing, and pressing reset, instead of re-executing the program will certainly cause it to crash. Ideally the EXEC address (N3) will be the same as the address JMP'd to in the relocation program. Of course if the program is to remain in the graphics area so much the better.

An example would be if Screen Designer itself were to be saved using Screen Designer.

Firstly the program would be loaded and executed, it is now in its workspace at loc 30001. However, as Screen Designer does not use Hires, the original program is still in the Graphics area, this can now be saved using:

```
CSAVEM "AUTODESN", &H0600, &H0CC1, &H7971
```

If the program is now saved, using Screen Designer, it will Auto-run on loading.

As can be seen, from the assembler listing, the relocation of code is very simple for anyone using the Alldream assembler, as there are two directives ORG and PUT which do the job for them.

Anyone referring to Brian Cadge's piece on Auto-running machine code will see that he has given a little piece of code that should start any auto-run program, with Screen Designer. However, this is unnecessary as this code is already taken care of.

The first piece of code at the execution address should be a NOP, this is so that if the reset button is pressed the program will re-execute, if a NOP is not present, a cold start will occur.

Option 5 includes prompts where the motor is turned on or off to enable tapes to be correctly positioned.

Hints and tips

Most of the code used in this program was gleaned from the pages of *Dragon User* at some time or another, particularly in

regard to logic instructions. (Bruce Devlin D.U. Jan '84).

The routine called, using the "&" key, loads each character in turn from the text screen into the A accumulator; a text character is by-passed but a graphics character has its value increased by 16, to alter its colour. The A accumulator is then OR'd with #128 (&H80) to ensure that a graphics and not a text character results.

In Twos complement arithmetic numbers 0-127 represent positive numbers (bit 7 is not set) and numbers 128-255 represent

negative numbers (bit 7 is set), also, not by coincidence, numbers 0-127 represent text characters, whereas numbers 128-255 are graphics characters. Therefore, by using TST and the conditional branches BMI and, as in this case BPL, it is possible to distinguish between graphics and text characters, and Branch accordingly.

The previously described routine, if used as a subroutine, can do wonders for Menus or any text page that is waiting for a prompt, Listing 4 gives a short example, a little

over the top, maybe, but it does demonstrate what can be done to liven up a screen.

All of the I/O functions are from Brian Cadge's "Firmware Series".

Entering machine code, especially without an assembler, can be laborious, so I will provide a copy of the program for £2 Write to Dennis Riley, 21 Colmore Road, Wortley, Leeds LS12 4DF. I will answer general questions about the program, but please send a stamped, self-addressed envelope.

Listing one: machine code data.

0600	8E7531108E0613ECA1ED	= 1125	07FE	52204F4E0D2020372E2E	= 495
060A	818C78DF26F77E797108	= 1268	0808	2E2E2E2E2E2E2E2E2E	= 460
0614	31033233343536377A2A	= 531	0812	2E2E2E2E2E2E2E404F544F	= 595
061E	7A297A797A7E7AAE7E14	= 1093	081C	52204F46460D20204252	= 552
0628	7ABD7AC21F2083753358	= 1078	0826	45414B2E2E2E2E2E2E2E	= 531
0632	03753A1F026EB4BD7A0C	= 1016	0830	2E2E2E2E2E2E2E2E2E2E	= 460
063C	1F2083756958C3757A1F	= 969	083A	2E2E515549540053454C	= 642
0646	026EB4120A5E09080340	= 498	0844	454254204E5540424552	= 709
0650	132B0C245F5B155D3C3E	= 532	084E	20524551554952454400	= 641
065A	2625779277A377C477B4	= 1236	0858	66696C656E616D653A2D	= 926
0664	7A7077D477F678167827	= 1231	0862	00736176696E673A2D2D	= 796
066E	78427869788C78B578E4	= 1320	086C	FF00FF00FF00FF009E88	= 1314
0678	79187932794D79664900	= 810	0876	3088208C05FF1022029E	= 826
0682	FF008F00000052455749	= 709	0880	9F881602999E883088E0	= 1174
068C	4E4420534F5552434520	= 675	088A	8C04001025028D9F8816	= 657
0696	5441504520544F205354	= 692	0894	02889E88301F8C040010	= 671
06A0	41525420414E44205052	= 662	089E	25027D9F881602789E88	= 897
06AA	45535320656E74657220	= 841	08A8	30018C05FF1022026D9F	= 769
06B4	544F204C4F4144004C4F	= 638	08B2	88160268C6FF5CC40FCA	= 1222
06BE	41442044455254494E41	= 685	08BC	80F775A2FA7BD99E88E7	= 1769
06C8	54494F4E205441504520	= 676	08C6	84BD800627FB814027E8	= 1209
06D2	414E4420202020202020	= 435	08D0	16025AC6F0F77BD9F67B	= 1508
06DC	505245535320656E7465	= 857	08DA	D9CB10C17022F2F77BD9	= 1604
06E6	7200504F534954494F4E	= 743	08E4	FA75A29E88E784BD8006	= 1509
06F0	2044455354494E415449	= 709	08EE	27FB81131026023720E0	= 805
06FA	4F4E205441504520414E	= 662	08F8	9E88F675A2FA7BD9E784	= 1772
0704	44202020505245535320	= 592	0902	30019F881602159E888C	= 823
070E	656E7465720053455420	= 810	090C	04001027020CB67BD881	= 723
0718	544F205245434F524420	= 674	0916	7F26028B01A784A7829F	= 1062
0722	5448454E205052455353	= 732	0920	881601FAC680F778D8BD	= 1510
072C	20656E7465722020544F	= 801	092A	BA797A78D8BD800627FB	= 1381
0736	20534156452050524F47	= 679	0934	8124102601E4F678D8C1	= 1226
0740	52414D004D454E550020	= 565	093E	FF24E3CB10F778D88DBA	= 1698
074A	20312E2E2E2E2E2E2E2E	= 449	0948	7920E48D79B28E0400EC	= 1251
0754	2E2E2E2E2E2E43524541	= 559	0952	8820ED818C05E025F610	= 1202
075E	54452053435245454E0D	= 646	095C	8E7BDA8E05E0ECA1ED81	= 1617
0768	2020322E2E2E2E2E2E2E	= 436	0966	8C060025F71601B08D79	= 939
0772	2E2E2E2E2E2E44495350	= 580	0970	B28E05FFA688E0A78430	= 1453
077C	4C41592053435245454E	= 710	097A	1F8C041E22F4108E7BDA	= 982
0786	0D2020332E2E2E2E2E2E	= 404	0984	31A901E08E0400ECA1ED	= 1223
0790	2E2E2E2E2E2E2E2E2E2E	= 460	098E	818C042025F7160187BD	= 936
079A	53415645205343524545	= 705	0998	79B28E0400C61FA601A7	= 1008
07A4	4E0D2020342E2E2E2E2E	= 437	09A2	805A26F930018C060025	= 737
07AE	2E2E2E2E2E2E2E2E2E2E	= 460	09AC	F08E041F108E7BDAA6A4	= 1246
07B8	2E4C4F41442053435245	= 667	09B6	A78431A8203088208C06	= 910
07C2	454E0D2020352E2E2E2E	= 461	09C0	0025F1160158BD79B28E	= 1019
07CC	2E2E5341564520415554	= 661	09CA	05FFC61FA61FA784301F	= 1064
07D6	4F2052554E2050524F47	= 713	09D4	5A26F7301F8C040022EE	= 870
07E0	52414D002020362E2E2E	= 493	09DE	8E0400108E7BDA31A81F	= 893
07EA	2E2E2E2E2E2E2E2E2E2E	= 460	09E8	A6A4A78431A820308820	= 1094
07F4	2E2E2E2E2E2E404F544F	= 595	09F2	8C05E125F1160124BD7A	= 1018

Listing one cont.

09FC	213088E0E6843404C61F	= 1088	0E5A	FE8D79C620B4BD7AC98D	= 1675
0A06	A601A7805A26F93504E7	= 1127	0B64	BA778E04009F888E7781	= 1136
0A10	8416010ABD7A21301FE6	= 818	0B6E	BD7A158E797734108E7B	= 1047
0A1A	843404C61FA61FA78430	= 961	0B78	D8BF01E734101F10C302	= 951
0A24	1F5A26F73504E7841600	= 848	0B82	0234068E7971BF01E534	= 909
0A2E	EF8D79B28E0400A6844D	= 1248	0B8C	107E9916BD7AC98D88B3	= 1386
0A38	2A048B108A80A7808C06	= 908	0B96	8E0000BDB74816FE8ABD	= 1237
0A42	0025F01600D69E88E684	= 1169	0BA0	80157E7998BD80187E79	= 1139
0A4C	C840E7841600CE120F6F	= 999	0BAA	988608B701D1B775A3BD	= 1342
0A56	7F75A5BDBA778E040E9F	= 1222	0BB4	BA77CE77898E7776108E	= 1304
0A60	888E7662BD7A158E0460	= 1068	0BBE	01D2BD7A15BD79F68D80	= 1416
0A6A	9F888E7667BD7A158E05	= 1137	0BC8	0627F8810827DC810D27	= 870
0A74	E59F888E775FBD7A15BD	= 1401	0BD2	0EBD800CA7A0A7C07A75	= 1268
0A7E	800627FBF67531108E75	= 1111	0BDC	A3270F20E28620A7A0A7	= 1135
0A88	32A1A01027FB9D5A26F7	= 1209	0BE6	C07A75A326F72007BD79	= 1228
0A92	20E9BD7A0C8E0400108E	= 892	0BF0	F6810D26F939BD8A778E	= 1368
0A9C	7BDAEC81EDA18C060025	= 1287	0BFA	75A6BD7A15BD8015BD80	= 1270
0AA6	F739108E04008E7BDAEC	= 1185	0C04	06810D26F9BD8018BD7A	= 1087
0AB0	81EDA1108C060025F639	= 1029	0C0E	C98DB8B38E0000BDB748	= 1339
0ABA	3426CCFFFFD0150FD01	= 1392	0C19	BF759EBE01E5BF75A0BD	= 1543
0AC4	52FD0154FD0156FD0158	= 1102	0C22	BA778E75DABD7A15BD80	= 1431
0ACE	108E2328313F26FC35A6	= 854	0C2C	06810D26F9BD8015BD8A	= 1148
0AD8	34127375A59E88A68488	= 1195	0C36	778E7606BD7A15BD8006	= 1040
0AE2	40A7848E0472301F26FC	= 992	0C40	810D26F9BD8018BD8A77	= 1264
0AEC	35927D75A52703BD79F6	= 1204	0C4A	8E7632BD7A15BD800681	= 1094
0AF6	393412A680BD800C4D26	= 865	0C54	0D26F9BD7AC9BD79C68E	= 1462
0B00	F83592A6801F10C41F26	= 1053	0C5E	0300108E7BC9A6A0A780	= 1106
0B0A	F839C68FF77BD8BD8A79	= 1728	0C68	4D26F9867EB701678E03	= 1056
0B14	8E04009F887301492003	= 665	0C72	00BF01688E78B134108E	= 948
0B1E	BD79D8BD79F6BD800627	= 1444	0C7C	0167BF01E73410BE759E	= 1060
0B28	F8810D27F4108E7568F6	= 1298	0C86	34108E75A0BF01E53410	= 1024
0B32	7567A1A01027FAFF5A26	= 1229	0C90	7E99188639B701678EB4	= 1106
0B3C	F7BD7A0C81202609B67E	= 1083	0C9A	4F9F728E0300C6104FA7	= 957
0B46	D8817F26028B01BD800C	= 981	0CA4	805A26FB16FDAE8639B7	= 1330
0B50	20CC730149BD79B216FE	= 1189	0CAE	016732628E01E59F727E	= 1071
			0CB8	060000000000FF00FF00	= 516

Listing two: Alldream assembler listing.

0600	0600	ORG	#0600	757A	7792	TABSEL	FCB	DOWN
0600	8E7531	LDX	#30001	757C	77A3		FCB	UP
0603	108E0613	LDY	#THERE	757E	77C4		FCB	RIGHT
0607	ECA1	MOVLP	LDD	7580	77B4		FCB	LEFT
0609	ED81		,Y++	7582	7A70		FCB	RTOMEN
060B	8C7BDF		,X++	7584	77D4		FCB	CHASEL
060E	26F7		##7BDF	7586	77F6		FCB	COLSEL
0610	7E7971		MOVLP	7588	7816		FCB	REPEAT
0613	12		JMP	758A	7827		FCB	DELETE
7531	7531	THERE	START	758C	7842		FCB	BACKGD
7531			30001	758E	7869		FCB	SCRLUP
7531			THERE	7590	788C		FCB	SCRLDN
7531	08	MNTBNO	8	7592	78B5		FCB	SCRLLF
7532	3103323334	MENTAB	49, #03, 50, 51, 52, 53	7594	78E4		FCB	SCRLRT
7538	3637		54, 55	7596	7918		FCB	SCLNLF
753A	7A2A	MNFNTB	CREATE	7598	7922		FCB	SCLNRT
753C	7A29		RETURN	759A	7940		FCB	ALTCOL
753E	7A79		DSPLAY	759C	7966		FCB	ORCHAR
7540	7A7E		SAVE	759E			RMB	8
7542	7AAE		LOAD	75A0			RMB	143
7544	7B14		AUTO	75A2	8F		EXECST	
7546	7ABD		CASSON	75A3	00		CHABUF	FCB
7548	7ACB		CASOFF	75A4			COUNT	FCB
754A	1F20	MNCALC	Y,0	75A5	00		OFFSET	RMB
754C	837533		#MENTAB+1	75A6	524557494E		BLKFLG	FCB
754F	58	SUBD		75A7	4520544F30		LDMESS	FCB
7550	C3753A	LSLB		75A8	4553532065			FCB
7553	1F02	ADDD	#MNFNTB	75A9	00			FCB
7555	6EB4	TFR	D, Y	750A	4C4F414420	SVIMES	FCB	/REWIND SOURCE TAP/ /E TO START AND PR/ /ESS enter TO LOAD/ /
7557	BD7A0C	JMP	(, Y)	750B	5441504520	FCB		/LOAD DESTINATION / /TAPE AND PR/ /
755A	1F20	TABCHK	JSR	750C	4553532065	FCB		/ESS enter/,0 /POSITION DESTINAT/ /ION TAPE AND PR/ /
755C	837569	TFR	TESTFL	750D	00	FCB		/SET TO RECORD THE/ /N PRESS enter TO/ /SAVE PROGRAM/,0 /MENU/,0 /32,32/ /1.....OR/ /EATE SCREEN/,13,32
755E	58	SUBD	Y,0	750E	504F534954	SVIMES	FCB	
7560	C3757A	LSLB	#TABLE+1	750F	494F4E2054	FCB		
7563	1F02	ADDD	#TABSEL	7510	4553532065	FCB		
7565	6EB4	TFR	D, Y	7511	4553532065	FCB		
7567	12	JMP	(, Y)	7512	5345542054	SVIMES	FCB	
7568	0A5E090803	TABNUM	FCB	7513	4E20505245	FCB		
7560	4013280C24	TABLE	18	7514	2053415645	FCB		
7572	5F5B15503C	FCB	#0A, #5E, #09, #08, #03	7515	40454E5500	MENMES	FCB	
7577	3E2625	FCB	#40, 19, #28, 12, #24	7516	2020	MN2MES	FCB	
		FCB	#5F, #5B, #15, #5D, #3C	7517	312E2E2E2E	FCB		
		FCB	#3E, #26, #25	751A	4541544520	FCB		

Listing two cont.

7697	20	FCB	32		
7698	322E2E2E2E	FCC	/2.....DIS/		
7699	304C415920	FCC	/PLAY SCREEN/,13,32		
76A6	20	FCB	32		
76A7	332E2E2E2E	FCC	/3...../		
76B9	5341564520	FCC	/SAVE SCREEN/,13,32		
76C5	20	FCB	32		
76C6	342E2E2E2E	FCC	/4...../		
76D7	4C4F414420	FCC	/LOAD SCREEN/,13,32		
76E4	20	FCB	32		
76E5	352E2E2E2E	FCC	/5.....SAVE AUTO-/		
76F6	52554E2050	FCC	/RUN PROGRAM/,13,32		
7703	20	FCB	32		
7704	362E2E2E2E	FCC	/6...../		
7715	2E2E2E4D4F	FCC	/...MOTOR ON/,13,32		
7722	20	FCB	32		
7723	372E2E2E2E	FCC	/7...../		
7734	2E2E4D4F54	FCC	/...MOTOR OFF/,13,32		
7741	20	FCB	32		
7742	4252454148	FCC	/BREAK...../		
7753	2E2E2E2E2E	FCC	/.....QUIT/,0		
775F	53454C4543	SELMES	FCC	/SELECT NUMBER REQ/	
7770	5549524344	FCB	0	/WIRED/,0	
7776	56596C656E	FLNAME	FCC	/filename:-/,0	
7781	736176696E	SAVING	FCC	/saving:-/	
7789		NMBUFF	RMB	0	
7791	00	FCB	0		
7792	9E88	DOWN	LDR	#88	
7794	308820	LEAX	32,X		
7797	8C05FF	CMPI	#1535		
779A	1023029E	LBI	CRWT1		
779E	9F88	STX	#88		
77A0	160299	LBRA	CRWT1		
77A3	9E88	LDR	#88		
77A5	3088E0	LEAR	-32,X		
77A8	8C0400	CMPI	#1024		
77AB	1023029E	LBLO	CRWT1		
77AF	9F88	STX	#88		
77B1	16029E	LBRA	CRWT1		
77B4	9E88	LEFT	LDR	#88	
77B6	3081F	LEAR	-1,X		
77B8	8C0400	CMPI	#1024		
77BB	1025027D	LBLO	CRWT1		
77BF	9F88	STX	#88		
77C1	160278	LBRA	CRWT1		
77C4	9E88	RIGHT	LDR	#88	
77C6	3001	LEAX	1,X		
77C8	8C05FF	CMPI	#1535		
77CB	1022026D	LBI	CRWT1		
77CF	9F88	STX	#88		
77D1	16026B	LBRA	CRWT1		
77D4	C6FF	CHASEL	LDB	##FF	
77D6	5C	CHWT01	INCB		
77D7	C40F	ANDB	##0F		
77D9	C480	ORB	##80		
77DB	F775A2	STB	CHABUF		
77DE	FA7B09	ORB	COLBUF		
77E1	9E88	LDX	#88		
77E3	E784	STB	,X		
77E5	BD8006	CHSLWT	JSR	#2006	
77E8	27FB	BEQ	CHSLWT		
77EA	8140	CMPA	##40		
77EC	27E8	BEQ	CHWT01		
77EE	16025A	LBRA	CRWT2		
77F1	C6F0	RSTCOL	LDB	#240	
77F3	F77809	STB	COLBUF		
77F6	F67B09	COLSEL	LDB	COLBUF	
77F9	CB10	ADDB	#16		
77FB	C170	CMPB	#112		
77FD	22F2	BHI	RSTCOL		
77FF	F77E09	STB	COLBUF		
7802	FA75A2	ORB	CHABUF		
7805	9E88	LDX	#88		
7807	E784	STB	,X		
7809	BD8006	CLSLWT	JSR	#2006	
780C	27FB	BEQ	CLSLWT		
780E	8113	CMPA	#19		
7810	10260297	LBNE	CRWT2		
7814	20E0	REPEAT	LDR	CO1-FF	
7815	9E88	LDX	#88		
7818	F675A2	LDB	CHABUF		
781B	FA7B09	ORB	COLBUF		
781E	E784	STB	,X		
7820	3001	LEAX	1,X		
7822	9F88	STX	#88		
7824	160215	LBRA	CRWT1		
7827	9E88	DELETE	LDR	#88	
7829	8C0400	CMPX	#1024		
782C	1027020C	LBEQ	CRWT1		
7830	B67B08	LDA	CHGSTR		
7833	817F	CMPA	#127		
7835	2602	BNE	NXTDEL		
7837	8B01	ADDA	#1		
7839	A784	NXTDEL	STA	,X	
783B	A782	STA	,X		
783D	9F88	STX	#88		
783F	1601FA	LBRA	CRWT1		
7842	C680	BACKGD	LDB	#128	
7844	F77B08	STB	CHGSTR		
7847	80BA79	JSR	#BA79		
784A	7A7B08	DEC	CHGSTR		
784D	BD8006	CHGWT1	JSR	#2006	
7850	27FB	BEQ	CHGWT1		
7852	8124	CMPA	##24		
7854	102601E4	LBNB	CRWT1		
7858	F67B08	LDB	CHGSTR		
785B	C1FF	CMPB	#255		
785D	24E3	BHS	BACKGD		
785F	CB10	ADDB	#16		
7861	F77B08	STB	CHGSTR		
7864	80BA79	JSR	#BA79		
7867	20E4	BRA	CHGWT1		
7869	BD79B2	SCRULP	JSR	STRSCR	
786C	8E0400	LDD	#1024		
786F	EC8020	SCUPL1	LDD	32,X	
7872	ED81	STD	,X++		
7874	8C05E0	CMPX	#1504		
7877	25F6	BLO	SCUPL1		
7879	108E7BDA	LDY	##SCRNEF		
787D	8E05E0	LDX	#1504		
7880	ECA1	SCUPL2	LDD	,Y++	
7882	ED91	STD	,X++		
7884	8C0600	CMPX	#1536		
7887	25F7	BLO	SCUPL2		
7889	1601E0	LBRA	STRSCR		
788C	BD79B2	SCRLDN	JSR	STRSCR	
788F	8E05FF	LDX	#1535		
7892	A688E0	SCDNL1	LDA	-32,X	
7895	A784	STA	,X		
7897	301F	LEAX	-1,X		
7899	8C041E	CMPX	#1054		
789C	22F4	BHI	SCDNL1		
789E	108E7BDA	LDY	##SCRNEF		
78A2	31A901E0	LEAY	480,Y		
78A6	8E0400	LDX	#1024		
78A9	ECA1	SCDNL2	LCC	,Y++	
78AB	ED81	STD	,X++		
78AD	8C0420	CMPX	#1056		
78B0	25F7	BLO	SCDNL2		
78B2	160187	LBRA	CRWT1		
78B5	BD79B2	SCRLLF	JSR	STRSCR	
78B8	8E0400	LDX	#1024		
78BB	C61F	SCLFL2	LDB	#31	
78BD	A601	SCLFL1	LDA	1,X	
78BF	A780	STA	,X+		
78C1	5A	DECB			
78C2	26F9	BNE	SCLFL1		
78C4	3001	LEAX	1,X		
78C6	8C0600	CMPX	#1536		
78C9	25F0	BLO	SCLFL2		
78CB	8E041F	LDX	#1055		
78CE	108E7BDA	LDY	##SCRNEF		
78D2	A6A4	SCLFL3	LDA	,Y	
78D4	A784	STA	,X		
78D6	31A820	LEAY	32,Y		
78D9	308820	LEAX	32,X		
78DC	8C0600	CMPX	#1536		
78DF	25F1	BLO	SCLFL3		
78E1	160158	LBRA	CRWT1		
78E4	BD79B2	SCRRLT	JSR	STRSCR	
78E7	8E05FF	LDX	#1535		
78EA	C61F	SCRTL2	LDB	#31	
78EC	A61F	SCRTL1	LDA	-1,X	
78EE	A784	STA	,X		
78F0	301F	LEAX	-1,X		
78F2	5A	DECB			
78F3	26F7	BNE	SCRTL1		
78F5	301F	LEAX	-1,X		
78F7	8C0400	CMPX	#1024		
78FA	22EE	BHI	SCRTL2		
78FC	8E0400	LDX	#1024		
78FF	108E7BDA	LDY	##SCRNEF		
7903	31A81F	LEAY	31,Y		
7906	A6A4	SCRTL3	LDA	,Y	
7908	A784	STA	,X		
790A	31A820	LEAY	32,Y		
790D	308820	LEAX	32,X		
7910	8C05E1	CMPX	#1505		
7913	25F1	BLO	SCRTL3		
7915	160124	LBRA	CRWT1		
7918	BD7A21	SCLNLF	JSR	CLCPOS	
791B	3088E0	LEAX	-32,X		
791E	E684	LDB	,X		
7920	3404	PSHS	B		
7922	C61F	LDB	#31		
7924	A601	SLNLF1	LDA	1,X	
7926	A780	STA	,X+		
7928	5A	DECB			
7929	26F9	BNE	SLNLF1		
792B	3504	PULS	B		
792D	E784	STB	,X		
792F	16010A	LBRA	CRWT1		
7932	BD7A21	SCLNRT	JSR	CLCPOS	
7935	301F	LEAX	-1,X		
7937	E684	LDB	,X		
7939	3404	PSHS	B		
793B	C61F	LDB	#31		
793D	A61F	SLNRT1	LDA	-1,X	
793F	A784	STA	,X		
7941	301F	LEAX	-1,X		
7943	5A	DECB			

Listing two cont.

7944 26F7	BNE	SLNRT1	7A95 9F88	STX	#88
7946 3504	PULS	B	7A97 720149	COM	329
7948 E784	STB	,X	7A9A 2002	ERA	CRWAIT
794A 1600EF	LBRA	CRWT1	7A3C 8D79D8	CRWT1	JSR
794D 8D7982	ALTCOL	JSR	7A3F 8D79F6	CRWAIT	JSR
7950 8E0400	LDX	#1024	7A42 8D8006		JSR
7953 A684	ALTLPL	LDA	7A45 27F8		BEQ
7955 4D	TSTA	,X	7A47 2100		CMPA
7956 2A04	BPL	PRTCHR	7A49 27F4		BEQ
7958 9B10	ADDA	##10	7A4B 108E7568	CRWT2	LDY
795A 8A80	ORA	##80	7A4F F67567		LDB
795C A780	PRTCHR	STA	7A52 A1A0	CHOLP1	CMPA
795E 8C0600	CMPL	,X+	7A54 1027FAFF		LBEQ
7961 25F0	BLO	#1536	7A59 5A		DECB
7963 1600DE	LBRA	ALTLPL1	7A59 26F7		BNE
7966 9E88	ORCHAR	CRWT1	7A5B 8D7A0C		JSR
7968 E684	LDB	,X	7A5E 8120		CMPA
796A C840	EDRB	##40	7A60 2609		BNE
796C E784	STB	,X	7A62 B678D2		LDA
796E 1600CE	LBRA	CRWAIT	7A65 217F		CMPA
7971 12	START	NOP	7A67 2602		BNE
7972 8F6F	CLR	##F	7A69 9801		ADDA
7974 7F75A5	CLR	BLKFLG	7A6B 8D800C	NTSPAC	JSR
7977 8DBA77	MENPRT	##A77	7A6E 20CC		BRA
797A 8E040E	LDX	#1028	7A70 720149	RTOMEN	COM
797D 9F88	STX	##88	7A72 8D7982		JSR
797F 8E7662	LDX	##MENMES	7A76 16FEFE		LBRA
7982 8D7A15	JSR	SPRINT	7A79 8D79C6	DSPLAY	JSR
7985 8E0460	LDX	#1120	7A7C 20E4		BRA
7988 9F88	STX	##88	7A7E 8D7AC9	SAVE	JSR
798A 8E7667	LDX	##MN2MES	7A81 8DBA77		JSR
798D 8D7A15	JSR	SPRINT	7A84 8E0400		LDX
7990 8E05E5	LDX	#1509	7A87 9F88		STX
7993 9F88	STX	##88	7A89 8E7781		LDX
7995 8E775F	LDX	##SELMES	7A8C 8D7A15		JSR
7998 8D7A15	JSR	SPRINT	7A8F 8E7977		LDX
799B 8D8006	SLWAIT	JSR	7A92 3410		PSHS
799E 27F8	BEQ	SLWAIT	7A94 8E78D2		LDX
79A0 F67521	LDB	MNTBNO	7A97 BF01E7		STX
79A3 108E7522	LDY	##MENTAB	7A9A 3410		PSHS
79A7 A1A0	MNLOOP	CMPA	7A9C 1F10		TFR
79A9 1027FB9D	LBEQ	MNLCALC	7A9E C90202		ADDD
79AD 5A	DECB		7AA1 3406		PSHS
79AE 26F7	BNE	MNLOOP	7AA3 8E7971		LDX
79B0 20E9	BRA	SLWAIT	7AA6 BF01E5		STX
79B2 8D7A0C	STRSCR	JSR	7AA9 3410		PSHS
79B5 8E0400	LDX	TESTFL	7AAB 7E9918	LOAD	JMP
79B9 108E78DA	LDY	##SCRNBF	7AAE 8D7AC9		JSR
79BC EC81	STSCPL	LDD	7AB1 8D88B3		JSR
79BE EDA1	STD	,Y++	7AB4 8E0000		LDX
79C0 8C0600	CMPL	,Y++	7AB7 8D8748		JSR
79C2 25F7	BLO	#1536	7ABA 16FE8A		LBRA
79C5 39	RTS	STSCPL	7ABD 8D8015	CASSON	JSR
79C6 108E0400	DISSCR	LDY	7AC0 7E7998		JMP
79CA 8E78DA	LDX	##SCRNBF	7AC3 8D8018	CASOFF	JSR
79CD EC81	DSSCLP	LDD	7AC6 7E7998		JMP
79CF EDA1	STD	,Y++	7AC9 360C	GETNAM	LDA
79D1 108C0600	CMPL	#1526	7ACB 8701D1		STA
79D5 25F6	BLO	DSSCLP	7ACE 8775A3		STA
79D7 39	RTS		7AD1 8DBA77		JSR
79D8 2426	REPKEY	PSHS	7AD4 CE7729		LDD
79DA C0FFFF	LDD	D,Y	7AD7 8E7776		LDX
79DD FD0150	STD	##FFFF	7ADA 188E0102		LDY
79E0 FD0152	STD	#150	7ADE 8D7A15		JSR
79E2 FD0154	STD	#152	7AE1 8D79F6	FNWAIT	JSR
79E6 FD0156	STD	#154	7AE4 8D8006		JSR
79E9 FD0158	STD	#156	7AE7 27F8		BEQ
79EC 108E2328	DELAY1	LDY	7AE9 8108		CMPA
79F0 313F	DLOOP1	LEAY	7AEB 270C		BEQ
79F2 26FC	BNE	DLOOP1	7AED 2100		CMPA
79F4 25A6	PULS	D,Y,PC	7AEF 270E		BEQ
79F6 2412	CBLINK	A,X	7AF1 8D800C		JSR
79F8 7372A5	COM	BLKFLG	7AF4 A7A0		STA
79FB 9E92	LDX	##88	7AF6 A7C0		STA
79FD A684	LDA	,X	7AF8 7A75A3		DEC
79FF 8810	EORA	##40	7AFB 270F		BEQ
7A01 A784	STA	,X	7AFD 20E2		BRA
7A03 8E0472	LDX	##0472	7AFF 8620	CSFILL	LDA
7A06 201F	BLNKLP	LEAX	7B01 A7A0	FILLP	STA
7A08 26FC	BNE	BLNKLP	7B03 A7C0		STA
7A0A 3533	PULS	A,X,PC	7B05 7A75A3		DEC
7A0C 7075A5	TESTFL	TST	7B08 26F7		BNE
7A0F 2703	BEQ	BLKFLG	7B0A 2007		BRA
7A11 8D79F6	JSR	TESTRT	7B0C 8D79F6	GTNMW2	JSR
7A14 39	TESTRT	RTS	7B0F 8100		CMPA
7A16 2412	SPRINT	PSHS	7B11 26F9		BNE
7A17 A688	SPRLP1	LDA	7B13 39	GTNMRT	RTS
7A19 8D800C	JSR	,X+	7B14 8DBA77	AUTO	JSR
7A1C 4C	TSTA	##800C	7B17 8E75A6		LDX
7A1E 26FB	BNE	SPRLP1	7B1A 8D7A15		JSR
7A1F 2592	PULS	A,X,PC	7B1D 8D8015		JSR
7A21 A690	CLOPOS	LDA	7B20 8D8006	LOADWT	JSR
7A23 1F10	TFR	,X+	7B23 8100		CMPA
7A25 241F	ANDB	X,D	7B25 26F3		BNE
7A27 26FB	BNE	##1F	7B27 8D8018		JSR
7A29 39	RETURN	RTS	7B2A 8D7AC9		JSR
7A2A C69F	CREATE	LDB	7B2D 8D88B3		JSR
7A2C F778D2	STB	##142	7B30 8E0000		LDX
7A2F 8DBA77	JSR	CHGSTR	7B33 8D8748		JSR
7A32 8E0400	CREAT1	LDX	7B36 BF759E		STX
		#1024	7B39 8E01E5		LDX

Listing two cont.

7893	BF775440	STX	EXECST	7897	9410	PSHS	X
7894	00000000	JSR	#BA77	7899	8E0167	LDX	#359
7895	44000000	LDX	#359MEM3	789C	BF01E7	STX	#01E7
7896	00074115	JSR	SPRINT	789F	2410	PSHS	X
7897	44000000	SAVE2	#0006	78A1	8E759E	LDX	XSTORE
7898	44000000	CMPE	#12	78A4	2410	PSHS	X
7899	00000000	SAVE2	SAVE2	78A6	8E75A0	LDX	EXECST
789A	44000000	JSR	#0015	78A9	BF01E5	STX	#01E5
789B	44000000	JSR	#BA77	78AC	2410	PSHS	X
789C	00000000	LDX	#359MEM3	78AE	7E991E	JMP	39195
789D	00000000	JSR	SPRINT	78B1	8639	SAVE2	LDA #39
789E	00000000	CMPE	#12	78B3	B70167	STA	359
789F	00000000	SAVE2	SAVE2	78B6	8E844F	LDX	#B44F
78A0	00000000	JSR	#0015	78B9	9F72	STX	#72
78A1	00000000	JSR	#BA77	78BB	8E0300	LDX	#0300
78A2	00000000	LDX	#359MEM3	78BE	0610	LDL	#16
78A3	00000000	JSR	SPRINT	78C0	4F	CLRA	
78A4	00000000	CMPE	#12	78C1	A780	SVLOOP	STA ,X+
78A5	00000000	SAVE2	SAVE2	78C3	54	DECB	
78A6	00000000	JSR	#0015	78C4	26FB	BNE	SVLOOP
78A7	00000000	JSR	#BA77	78C6	16FDAE	LEBA	MENPRT
78A8	00000000	LDX	#359MEM3	78C9	8639270167	SAVE2	FDB #8639, #E701, #6732
78A9	00000000	JSR	SPRINT	78CF	828E01E59F	FDB	#628E, #01E5, #9F72
78AA	00000000	LDX	#359MEM3	78D5	7E06	FDB	#7E06
78AB	00000000	JSR	SPRINT	78D7	00	FDB	0
78AC	00000000	CMPE	#12	78D9	00	CHGTR	FDB 0
78AD	00000000	SAVE2	SAVE2	78DB	00	COLBUF	FDB 0
78AE	00000000	JSR	#0015	78DA		SCRNEF	RMB 512
78AF	00000000	JSR	#BA77	78DA			
78B0	00000000	LDX	#359MEM3	78DA			
78B1	00000000	JSR	SPRINT	78DA			
78B2	00000000	CMPE	#12	78DA			
78B3	00000000	SAVE2	SAVE2	78DA			
78B4	00000000	JSR	#0015	78DA			
78B5	00000000	JSR	#BA77	78DA			
78B6	00000000	LDX	#359MEM3	78DA			
78B7	00000000	JSR	SPRINT	78DA			
78B8	00000000	CMPE	#12	78DA			
78B9	00000000	SAVE2	SAVE2	78DA			
78BA	00000000	JSR	#0015	78DA			
78BB	00000000	JSR	#BA77	78DA			
78BC	00000000	LDX	#359MEM3	78DA			
78BD	00000000	JSR	SPRINT	78DA			
78BE	00000000	CMPE	#12	78DA			
78BF	00000000	SAVE2	SAVE2	78DA			
78C0	00000000	JSR	#0015	78DA			
78C1	00000000	JSR	#BA77	78DA			
78C2	00000000	LDX	#359MEM3	78DA			
78C3	00000000	JSR	SPRINT	78DA			
78C4	00000000	CMPE	#12	78DA			
78C5	00000000	SAVE2	SAVE2	78DA			
78C6	00000000	JSR	#0015	78DA			
78C7	00000000	JSR	#BA77	78DA			
78C8	00000000	LDX	#359MEM3	78DA			
78C9	00000000	JSR	SPRINT	78DA			
78CA	00000000	CMPE	#12	78DA			
78CB	00000000	SAVE2	SAVE2	78DA			
78CC	00000000	JSR	#0015	78DA			
78CD	00000000	JSR	#BA77	78DA			
78CE	00000000	LDX	#359MEM3	78DA			
78CF	00000000	JSR	SPRINT	78DA			
78D0	00000000	CMPE	#12	78DA			
78D1	00000000	SAVE2	SAVE2	78DA			
78D2	00000000	JSR	#0015	78DA			
78D3	00000000	JSR	#BA77	78DA			
78D4	00000000	LDX	#359MEM3	78DA			
78D5	00000000	JSR	SPRINT	78DA			
78D6	00000000	CMPE	#12	78DA			
78D7	00000000	SAVE2	SAVE2	78DA			
78D8	00000000	JSR	#0015	78DA			
78D9	00000000	JSR	#BA77	78DA			
78DA	00000000	LDX	#359MEM3	78DA			
78DB	00000000	JSR	SPRINT	78DA			
78DC	00000000	CMPE	#12	78DA			
78DD	00000000	SAVE2	SAVE2	78DA			
78DE	00000000	JSR	#0015	78DA			
78DF	00000000	JSR	#BA77	78DA			
78E0	00000000	LDX	#359MEM3	78DA			
78E1	00000000	JSR	SPRINT	78DA			
78E2	00000000	CMPE	#12	78DA			
78E3	00000000	SAVE2	SAVE2	78DA			
78E4	00000000	JSR	#0015	78DA			
78E5	00000000	JSR	#BA77	78DA			
78E6	00000000	LDX	#359MEM3	78DA			
78E7	00000000	JSR	SPRINT	78DA			
78E8	00000000	CMPE	#12	78DA			
78E9	00000000	SAVE2	SAVE2	78DA			
78EA	00000000	JSR	#0015	78DA			
78EB	00000000	JSR	#BA77	78DA			
78EC	00000000	LDX	#359MEM3	78DA			
78ED	00000000	JSR	SPRINT	78DA			
78EE	00000000	CMPE	#12	78DA			
78EF	00000000	SAVE2	SAVE2	78DA			
78F0	00000000	JSR	#0015	78DA			
78F1	00000000	JSR	#BA77	78DA			
78F2	00000000	LDX	#359MEM3	78DA			
78F3	00000000	JSR	SPRINT	78DA			
78F4	00000000	CMPE	#12	78DA			
78F5	00000000	SAVE2	SAVE2	78DA			
78F6	00000000	JSR	#0015	78DA			
78F7	00000000	JSR	#BA77	78DA			
78F8	00000000	LDX	#359MEM3	78DA			
78F9	00000000	JSR	SPRINT	78DA			
78FA	00000000	CMPE	#12	78DA			
78FB	00000000	SAVE2	SAVE2	78DA			
78FC	00000000	JSR	#0015	78DA			
78FD	00000000	JSR	#BA77	78DA			
78FE	00000000	LDX	#359MEM3	78DA			
78FF	00000000	JSR	SPRINT	78DA			

Listing three: Basic loader for machine code.

```

100 CLS:PRINT"ENTER START ADDRESS"
110 LINE INPUT"&H";AD#
120 AD=VAL("&H"+AD#)
130 CLS
140 PRINT
150 CK=0:CH=0:DT#="" :A#=""
160 PRINT"LINE 0";HEX#AD:;":- "
170 PRINT
180 INPUT"ENTER CHECKSUM";CS
190 PRINT
200 PRINT@161,"DATA>";
210 FORK=1TO20
220 A#=INKEY#:IF (A#<"A" OR A#>"F") AND (A#<"0" OR A#>"9") THEN220
230 DT#=DT#+A#:PRINT@162,;DT#;
240 NEXT
250 FORK=1TO20STEP2
260 CK=CK+VAL("&H"+MID$(DT#,K,2))
270 NEXT
280 IF CK<>CS THEN CLS:PRINT"DATA INCORRECT!! RE-ENTER":GOTO150
290 FORK=1TO20STEP2
300 POKEAD,VAL("&H"+MID$(DT#,K,2)):AD=AD+1
310 NEXT
320 IF AD>=&H0CC1 THEN CLS:PRINT"FINISHED":END
330 GOTO130

```

Listing four: shifting screen.

```

0600 0600          ORG  #0600
0600 0626          @START LDA  #134
0602 0E0400        LDX  #1024
0605 A780          LOOP  STA  ,X+
0607 0B10          ADDA  #16
0609 0A80          ORA   #080
060B 0C0600        CMPX  #1536
060E 25F5          BCS  LOOP
0610 CC9F8F        LDD  ##9F8F
0613 0E0400        LDX  #1024
0616 E78820        EDGLP1 STB  32,X
0619 A780          STA  ,X+
061B 0B10          ADDA  #16
061D 0A80          ORA   #080
061F 0C0420        CMPX  #1056
0622 25F2          BLD  EDGLP1
0624 CC8F9F        LDD  ##8F9F
0627 0E0500        LDX  #1472
062A E78820        EDGLP2 STB  32,X
062D A780          STA  ,X+
062F CB10          ADDB  #16
0631 CA80          ORB  #080
0633 0C05E0        CMPX  #1504
0636 25F2          BLD  EDGLP2
0638 CCAF8F        LDD  ##AF8F
063B 0E0420        LDX  #1056
063E ED84          EDGLP3 STD  ,X
0640 0B10          ADDA  #16
0642 0A80          ORA   #080
0644 308820        LEAX 32,X
0647 0C05E0        CMPX  #1504
064A 25F2          BLD  EDGLP3
064C CC9F9F        LDD  ##9F9F
064F 0E043E        LDX  #1086
0652 ED84          EDGLP4 STD  ,X
0654 CB10          ADDB  #16
0656 CA80          ORB  #080
0658 308820        LEAX 32,X
065B 0C05E0        CMPX  #1504
065E 25F2          BLD  EDGLP4
0660 0E044A        LDX  #1098
0663 9F88          STX  #88
0665 0E0686        LDX  #TEST

0668 BD06AA        JSR  SPRINT
066E 0E04EB        LDX  #1259
0670 9F88          STX  #88
0673 BD06C2        LDX  #TEST2
0676 BD06AA        JSR  SPRINT
0679 0E05A8        LDX  #1448
067B 9F88          STX  #88
067E 0E06CD        LDX  #TEST3
0681 BD06AA        JSR  SPRINT
0684 BD068C        WAIT JSR  ALTCOL
0687 8120          JSR  #2006
0689 25F6          CMPA  #32
068B 39            BNE  WAIT
068E 3412          RTS
0690 3412          ALTCOL PSHS A,X
0693 A694          LDX  #1024
0696 40            ALTLP1 LDA  ,X
0699 2A04          TSTA
069B 0B10          BPL  PRTCHR
069D 0A80          ADDA  ##10
069F 0A80          ORA  #080
06A1 A780          PRTCHR STA ,X+
06A4 0C0600        CMPX #1536
06A7 25F0          BLD  ALTLP1
06AA 0E4E20        LDX  #20000
06AD 301F          ALTLP2 LEAX -1,X
06AF 26FC          BNE  ALTLP2
06B1 3592          PULS A,X,PC
06B4 3412          SPRINT PSHS A,X
06B7 A680          SPRLP1 LDA  ,X+
06BA BD0600        JSR  #8000
06BD 40            TSTA
06BF 26F8          BNE  SPRLP1
06C1 3592          PULS A,X,PC
06C4 7465737480    TEST  FCC  /test/,128,/screen/
06C7 00            FCB  0
06CA 6273806480    TEST2 FCC  /by/,128,/d/,128
06CD 7269606579    FCC  /riley/,0
06D0 7370616265    TEST3 FCC  /spacebar/,128,/to/
06D3 80656E6400    FCC  128,/end/,0
06D6 0600
06D9 0600

```

Sound Ability

The Dragon makes more noise than you think, says Jonathan Bates.

I'M SURE that at one time or other you may have been jealous of the seemingly superior sound ability of other microcomputers such as the BBC or Atari machines. But the Dragon is equally able to create similar and even more advanced sound effects than these micros.

The problem is that the Dragon's sound facility is harder to use, as the other machines have specialist chips to handle their sound effects. But this is also a drawback for these machines as they are limited by the capabilities of their sound chips, whereas the Dragon's sound is only limited by your imagination.

The Dragon has excellent capabilities and is not limited by an inbuilt speaker linked directly to a sound chip like the system adopted for the BBC. This means we can relay sound from tape to the speaker (AUDIO ON) and record sound digitally in memory, a feature that is utilised in games such as *Tubeway Army* and *Dragrunner*. It is impossible to do this on the Beeb without adding additional hardware and so invalidating the warranty and risking damaging the machine.

Unfortunately the designers of the Dragon's basic interpreter did not utilise the

sound capability to its full potential, and only gave us a SOUND and PLAY command, both of which are very limited and only give us one kind of note. I have written some short routines to demonstrate the potential of Dragon sound and although these routines are only the tip of the iceberg I think they will give you some inspiration to develop your own.

Analogue port

Listing 1 is a routine which uses the analogue port to free the sound generator. To use this, bit four of location &FF23 must be set. This is done by ORing it with 8. Then the routine takes a number from the low byte of the timer at location 275 and keeps decrementing the 'B' accumulator and storing the result in &FF20, the analogue port to which the sound generator is mapped, causing the effects. Only the top six bits of this port are used and the value placed in those bits corresponds to the volume of the click relayed to the loudspeaker. The rest of **listing 1** increments the accumulator, storing the result in &FF20 and, after doing this 255 times, the value in the accumulator returns to zero,

setting the zero flag. This bypasses the Branch Not Equal instruction and Branches to the start again, repeating the process. This causes a pleasant sound effect which you can try yourself if you have an assembler, otherwise try typing in **listing 4**. I have located this routine at address 20000 but it is completely relocatable.

Even more effective is **listing 2** which I call 'Wangys'; if you type it in you will see and hear why. This routine uses the hires screen memory and simply operates an Exclusive OR on the accumulator from each memory location, leaves the result in that location and &FF20 and then moves on to the next location until it gets to the end of the screen. At this point it repeats itself. The Basic program, after setting up mode four, draws a circle, fills it in and then runs the routine. Starting off with different shapes or patterns causes completely different sound effects, so try replacing lines 20 to 90 with your own shapes. If you don't have an assembler, try **listing 5**.

Listing 3 extends the Dragon's inbuilt sound command and should be used in addition with the commands already used. It causes a note with different, 'buzzy' harmonics and it can also be used very

quickly as it is in lines 60 to 90 in the accompanying Basic demonstration program.

The routine enables you to create a note of certain volume, pitch and length. The duration is controlled by the value in address ?4E60, the pitch is controlled by &4E62 and the volume by &4E64 although you can change these by changing their values at the end of the assembly listing, or as shown in the basic listing 6. The routine is also relocatable and it may be a good

idea to shift it up in memory if you use it in a program where you are short on space.

The Dragon also has useful cassette port handling features and can be used for speech recognition, I have written a program to demonstrate this (listing 7). The program takes values from locations &FF20,&FF24,&FF28 and &FF30 and displays a quantity graph of the results on the screen. Each location gives a value of either one or zero depending on the sound from the cassette port. Try playing music

from the cassette and watch the result, and if you find that any of the lines drift in a particular direction alter the volume and tone levels until they remain more or less straight. This level will then be your optimum volume and tone (if you have tone) levels for loading software. You will also see that different parts of the music make the some of the lines rise higher. Do not expect a sudden peak on a particularly loud note as the routine will simply make a line move up one pixel!

Listing one

```

4E20 4E20          ORG 20000
4E20          PUT 20000
4E20 8E08          @START LDA #8
4E22 BAF23         ORA  $FF23
4E25 B7FF23        STA  $FF23
4E28 F60113       LOOP1 LDB  275
4E2B F7FF20       LOOP2 STB  $FF20
4E2E 5A           DECB
4E2F 26FA         BNE  LOOP2
4E31 F7FF20       LOOP3 STB  $FF20
4E34 5C           INCB
4E35 26FA         BNEB LOOP3
4E37 20EF        BRA  LOOP1
4E39

```

Listing two

```

4E20 86FF          @START LDA #255
4E22 C608          LDB #8
4E24 FAF23         ORB  $FF23
4E27 F7FF23        STB  $FF23
4E2A 8E0600        LDX  $600
4E2D B7FF20        LOOP  STA  $FF20
4E30 A884          EDRA ,X
4E32 A780          STA  ,X+
4E34 8C1E00        CMPX $1E00
4E37 26FA         BNE  LOOP
4E39 20E5         BRA  @START
4E3B

10 PMODE4,1:SCREEN1,1:PCLS
15 REM *Try drawing different shapes e.t.c.
20 CIRCLE(128,96),50
30 PAINT(128,96)
100 EXEC 20000

```

Listing three

```

4E20 B6FF23        @START LDA  $FF23
4E23 8A08          ORA   #8
4E25 B7FF23        STA  $FF23
4E28 B64E60        LDA  LENGTH
4E2B B74E61        STA  LEN
4E2E B64E62        LDA  PITCH
4E31 B74E63        STA  PIT
4E34 B64E64        LDA  VOLUME
4E37 49           ROLA
4E38 49           ROLA
4E39 C600          LDB  #0
4E3B B7FF20        SOUND STA  $FF20
4E3E F7FF20        STB  $FF20
4E41 7A4E63        LOOP1 DEC  PIT
4E44 26FB         BNE  LOOP1
4E46 F64E62        LDB  PITCH
4E49 F74E63        STB  PIT
4E4C C600          LDB  #0
4E4E B7FF20        STA  $FF20
4E51 F7FF20        STB  $FF20
4E54 7C4E63        LOOP2 INC  PIT
4E57 26FB         BNE  LOOP2
4E59 7A4E61        DEC  LEN
4E5C 26DD         BNE  SOUND
4E5E 39           RTS

4E5F 4E60          LENGTH EQU  $4E60
4E5F 4E61          LEN      EQU  $4E61
4E5F 4E62          PITCH   EQU  $4E62
4E5F 4E63          PIT     EQU  $4E63
4E5F 4E64          VOLUME  EQU  $4E64
4E5F

10 DURATION=&H4E60;'location for length
20 PITCH=&H4E62;'location for pitch
30 VOLUME=&H4E64;'location for volume
40 POKEDURATION,1;'change duration
50 POKE VOLUME,255;'change volume
60 FOR A=1 TO 255
70 POKEPITCH,A;'change pitch
80 EXEC &H4E20;'call routine
90 NEXT A
100 POKEDURATION,RND(20)
110 POKEVOLUME,RND(255)
120 POKEPITCH,RND(255)
130 EXEC&H4E20
140 GOTO 100
150 'volume,pitch and duration can be
    in the range 0 to 255)

```

Listing four

```

10 CLEAR200,19999;'This should always be x=1
20 X=20000;'Change x to relocate
30 Y=X
40 READ A#
50 IF A#=""END" THEN POKE X,VAL("&H"+A#):X=X+1:GOTO40
60 EXEC Y
70 DATA86,08,BA,FF,23,B7,FF,20,F6,01,13,F7,FF,20,5A,26,FA,F7,FF,20,5C,26,FA,20,EF
80 DATA END

```

Listing five: Wangys

```
5 CLEAR200,19999:'This should always be x-1
10 PMODE4,1:SCREEN1,1:PCLS
15 GOSUB 1000
16 'Try drawings different shapes e.t.c.
20 CIRCLE(128,96),50
30 PAINT(128,96)
100 EXEC Y
1000 X=20000
1010 Y=X
1020 READ A#
1030 IF A#("&H") THEN POKEY,VAL("&H"+A#):X=X+1:GOTO1020
1040 RETURN
1050 DATA 86,FF,0B,08,FA,FF,23,F7,FF,23,8E,06,00,B7,FF,20,A8,84,A7,80,8C,1E,00,2
6,F4,20,E5
1060 DATA END
```

Listing six

```
4 CLEAR200,19999:'This should always be x-1
5 GOSUB 1000:'The following pokes relocate the program
6 A#=HEX$(Y+64):POKEY+9,VAL("&H"+LEFT$(A#,2)):POKEY+10,VAL("&H"+RIGHT$(A#,2)):PO
KEY+58,VAL("&H"+LEFT$(A#,2)):POKEY+59,VAL("&H"+RIGHT$(A#,2))+1
7 POKEY+12,VAL("&H"+LEFT$(A#,2)):POKEY+13,VAL("&H"+RIGHT$(A#,2))+1:POKEY+34,VAL(
"&H"+LEFT$(A#,2)):POKEY+35,VAL("&H"+RIGHT$(A#,2))+3
8 POKEY+15,VAL("&H"+LEFT$(A#,2)):POKEY+16,VAL("&H"+RIGHT$(A#,2))+2:POKEY+39,VAL(
"&H"+LEFT$(A#,2)):POKEY+40,VAL("&H"+RIGHT$(A#,2))+2:POKEY+53,VAL("&H"+LEFT$(A#,2)
):POKEY+54,VAL("&H"+RIGHT$(A#,2))+3
9 POKEY+18,VAL("&H"+LEFT$(A#,2)):POKEY+19,VAL("&H"+RIGHT$(A#,2))+3:POKEY+21,VAL(
"&H"+LEFT$(A#,2)):POKEY+22,VAL("&H"+RIGHT$(A#,2))+4:POKEY+42,VAL("&H"+LEFT$(A#,2)
):POKEY+43,VAL("&H"+RIGHT$(A#,2))+3
10 DURATION=Y+64
20 PITCH=Y+66
30 VOLUME=Y+68
40 POKEDURATION,1
50 POKE VOLUME,255
60 FOR A=1 TO 255
70 POKEPITCH,A
80 EXEC Y
90 NEXTA
100 POKEDURATION,RND(20)
110 POKEVOLUME,RND(255)
120 POKEPITCH,RND(255)
130 EXEC Y
140 GOTO 100
1000 X=20000:'alter this value to where you want it re-locating
1010 Y=X
1020 READA#
1030 IF A#("&H") THENPOKEY,VAL("&H"+A#):X=Y+1:GOTO1020
1040 RETURN
1050 DATAB6,FF,23,8A,08,B7,FF,23,B6,4E,60,B7,4E,61,B6,4E,62,B7,4E,63,B6,4E,64,49
,49
1060 DATAC6,00,B7,FF,20,F7,FF,20,7A,4E,63,26,FB,FE,4E,62,F7,4E,63,C6,00,B7,FF,20
1070 DATAF7,FF,20,7C,4E,63,26,FB,7A,4E,61,26,DD,39
1080 DATA END
```

Listing seven

```
10 CLS
20 INPUT"DO YOU WANT TO LISTEN TO INPUT":A#
30 IF LEFT$(A#,1)="Y" THEN AUDIOON ELSE AUDIOOFF
40 MOTORON
50 PMODE4,1:SCREEN1,1:PCLS
60 Y1=35
70 Y2=80
80 Y3=125
90 Y4=170
100 FOR A=0 TO 255
110 Y1=Y1+(PEEK(&HFF20)=1)-(PEEK(&HFF20)=0)
120 Y2=Y2+(PEEK(&HFF24)=1)-(PEEK(&HFF24)=0)
130 Y3=Y3+(PEEK(&HFF28)=1)-(PEEK(&HFF28)=0)
140 Y4=Y4+(PEEK(&HFF30)=1)-(PEEK(&HFF30)=0)
150 IF Y1<0 OR Y2<0 OR Y3<0 OR Y4<0 OR Y1>190 OR Y2>190 OR Y3>190 OR Y4>190 THEN
50
160 PSET(A,Y1):PSET(A,Y2):PSET(A,Y3):PSET(A,Y4)
170 NEXTA
180 GOTO50
```

Sliding Graphics

Pam D'Arcy slips into something a little more BASIC.

PERHAPS it is a sign of the maturity of the Dragon and its users that these days "Dragon User" features an abundance of machine code articles and, excellent though they may be, programs containing meaty hex dumps. However, I still come across many readers who are not interested in machine code and others who are put off by long listings, so once again I am offering a non-arcade game of minimum length, written entirely in BASIC, capable, of your own enhancements to suit. REM lines may be omitted for even faster completion. For those who like rather more than just a listing, some explanation of the Dragon BASIC graphics statements used completes the article.

Slide Puzzle Program (Listing 2)

The program takes the existing contents of graphics pages 1-4, copies them to pages 5-8 where it treats them as a 4*4 grid as in a sliding tile puzzle, scrambles the 'tiles', then waits for the player to reconstitute the original picture by moving the 'tiles' via the 'blank' square using the arrow keys. Movement is as per the plastic puzzle, that is, a 'tile' is moved into the 'blank' space. There is an abandon option (#) to allow the totally lost to start again!

Any existing PMODE3 screen may be used, although 'tile edging' and a contrasting coloured 'blank' square may need to be incorporated for easier operation. Instructions for doing this are detailed below. The 'default' position of the blank square is the top left of the screen. Meanwhile, a quick picture may be obtained from Listing 1.

A Picture Of A House (Listing 1)

I recommend that Line 540 is typed in first then to RUN the program after typing in each LINE/CIRCLE/PAINT statement which will show you the effect of each graphics statement and will confirm the validity of the statement as typed rather than laborious debugging after typing in the whole. When completed, delete line 540 if you intend to append Listing 2 to form a single program.

An Existing Picture

Any existing PMODE3 graphics picture currently in graphics pages 1-4 may be used. You may have one available from a graphics generator program, light pen or touch pad creations, from interrupting (BREAK-RESET) a game containing a nice graphics display or one designed and drawn up by a program of your own making.

If you do not have a copy of the screen stored on tape or disk, I recommend that as the first step so that it can be reloaded another time, including if it gets messed up following these instructions! If needed, Table 1 offers assistance with saving and loading the graphics screen.

Listing 3 (comprising an edited LINE 20, new LINE 30 and existing LINES 440-540 of Listing 1) is a program that will draw in the 'tile edging' and 'blank' the square in the top left position of the screen. To change the blank's colour, the first parameter of the COLOR statements should be changed to the number of the required colour. To change the position of the blank square, the appropriate co-ordinates as given in Table 2 should be used in LINE 530. The default values for the position of the blank square in the Slide Program will need to be amended accordingly (see below).

LINE 30 makes a quick 'safety' copy of graphics pages 1-4 to pages 5-8 when RUN. Should you want to change something after the first RUN, a re-load of the original screen from tape or disk is unnecessary if you also edit LINE 30 to ... PCOPY N+4 TO N ... to restore the original copy when the program is subsequently RUN.

Having set up the tile edging and blank square, save the masterpiece to tape or disk for future loading to use with the Slide Program.

Program Techniques

Various 'default' values can quickly be changed to suit your requirements. These are centred on LINE 630:

- CS=colour set (when RUN, key C changes colour set anyway)
- DX, DY=default blank square co-ordinates of the 4*4 grid, 0-3 across (DX) by 0-3 down (DY),

thus 0,0=top-left; 3,0=top right
0,3=bottom left; 3,3=bottom right, etc.
MV=value that is subject of RND to determine number of tile movements (when added to 6) to jumble the picture,

thus the initial default jumble is between 7 and 16 moves. (I use MV=16 for my children).

The GET statement copies a described rectangle from the screen display into an area of memory called an ARRAY VARIABLE. That Array Variable can then be copied to a different part of the screen using the PUT statement. In the Slide Program, we need to swap the blank square 'rectangle' with an adjacent 'rectangle' of a 'picture tile'. The contents of the blank square 'rectangle' never change so LINE 740 copies it to the array 'BS' where it stays for the duration of the run.

The important thing about the size of the array variable for GET/PUT is that the manual is wrong and greatly overstates the required size.

The width of the 'tiles' in pixel points for each of the four 'tiles' across the screen is 256/4=64 (variable PX). The depth of the 'tiles' in pixel points for each of the four 'tiles' down the screen is 192/4=48 (variable PY). According to the manual, this would require an array DIM BS(63,47) to store a copy of any of the 'tiles'. In fact, the graphics data is tightly packed into the array and a formula for calculating the required size that will work for all PMODES and GET/PUT options is:

TABLE 1
SAVE/LOAD FROM/TO GRAPHICS PAGES 1-4

System	SAVE	LOAD
Cassette only	CSAVEM"SCREEN", 1536, 1536+6144-1,6144	CLOADM"SCREEN"
DragonDOS 1.0	SAVE"SCREEN", 3072, 3072+6144, 6144	LOAD"SCREEN.BIN"
DragonDOS 4.0) & Cumana 2.0)	SAVE"SCREEN", 3072, 3072+6144-1, 6144	LOAD"SCREEN.BIN"
DeltaDOS	SAVEM"SCREEN", 1536, 1536+6144-1	LOADM"SCREEN"

TABLE 2
X, Y CO-ORDINATES TO FILL 'RECTANGLE' WITHIN 'EDGED TILE'

2,1	61,46	66,1	125,46	130,1	189,46	194,1	253,46
2,49	61,94	66,49	125,94	130,49	189,94	194,49	253,94
2,97	61,142	66,97	125,142	130,97	189,142	194,97	253,142
2,145	61,190	66,145	125,190	130,145	189,190	194,145	253,190

PX=Width of rectangle involved in
PIXEL POINTS

PY=depth of rectangle involved in
PIXEL POINTS

Then ARRAY VARIABLE size=INT ((INT
(((PX*PY)+7)/8)+4)/5)

Thus, typing into the Dragon the above
information in COMMAND MODE

PX=64 <ENTER>

PY=48 <ENTER>

PRINT INT((INT(((PX*PY)+7)/8)+4)/5)
<ENTER>

reveals a required DIM Array size of 77 (so
even the BS(80) slightly exceeds the
minimum requirement!).

There is no harm in overstating the
required size, apart from wasting memory,
but there is every harm in understating the
size. Also, unlike the normal use of arrays in
BASIC where if an array that has not been
specifically DIMensioned is encountered,
BASIC automatically allocates a 'default'
size of 10, the array MUST be defined in a
DIM statement as BASIC will flag an
ERROR and NOT default define the
ARRAY in these circumstances. The purpose
of the LD variable checked in line 820
is to avoid the next tile move when jumbling
the picture to simply mirror the previous
move, thus negating some of the effect of
the moves.

The GET/PUT subroutine in lines 1040-
1080 swaps the tile to be moved with the
adjacent 'blank' square. At this point, the
4*4 grid co-ordinates are held in MX and
MY for the 'picture tile' being moved and BX
and BY for the current position of the 'blank
square'. First, the 'picture tile rectangle' is
GET into the MS Array variable. The 'blank
square rectangle' copied into array variable
BS at the start of the run is PUT over that tile
on the screen. The 'picture tile rectangle' in
array MS is then PUT over the 'blank

square rectangle' that it is being moved to.
The blank square co-ordinates are then
updated to its new position (line 1070).

Avoiding FC Errors

If the Slide Program is abandoned by, say,
pressing BREAK rather than using the '*'
option, and the next PCLEAR statement
used is other than PCLEAR8, either directly
from the keyboard or even in a newly
loaded program prior to a PMODE state-
ment being issued, an FC ERROR will
occur.

This is because the Slide program was
currently set to PMODE 3.5 thus using
graphics pages 5-8 and the BASIC inter-
preter safeguards the graphics pages
needed by the current PMODE setting. A
lower PCLEAR figure will not be allowed
until the machine has had its PMODE
setting suitably reset. Thus when the
program is quit through its in-built option
(*), the PMODE setting is set to the lowest
option requiring just one graphics page,
PMODE0,1 prior to the END statement (line
950). The PCLEAR8 is reset to PCLEAR4
to release the unneeded 'working' pages of
the slide puzzle, but retaining the 'master'
pages 1-4 intact in case the program is
re-RUN. A BASIC program is physically
moved down into the freed graphics pages
as soon as a lower PCLEAR statement is
issued; try quitting the program using the
'*' option, typing in PCLEAR1<ENTER>
from the keyboard then RUN<ENTER>. The
visible graphics screen corruption is
where the Slide Program was moved to
following PCLEAR1. It is physically copied
to higher in memory when a greater number
of graphics pages than at present are
reserved with PCLEAR. It is quite a good
idea to commence graphics programs with
a PMODE0,1 so that FC Errors are avoided

when setting up graphics requirements
regardless of the state that a previous
program may have left the machine in.

Picture Programming

I have spent rather longer than intended on
the Slide program so will just mention one
or two brief points regarding the Picture
Program. In PMODE3, the size of the
colour unit is 2 pixel points wide by 1 pixel
point deep. The co-ordinates used are still
based on the highest resolution graphics
screen, being 256 pixel points across (and
192 points down). They are addressed as
0-255 and 0-191 respectively. If an odd
pixel co-ordinate is specified when refer-
encing a point across the screen (= X
co-ordinate), that co-ordinate has 1 sub-
tracted from it when colouring the screen.
That is, as in the program where an X
co-ordinate such as 255 is used (line 60),
the blob of colour painted in occupies the
two pixel points 254 and 255. The size of
the colour unit is why a STEP of 2 is used in
line 80.

LINE statements with no concluding B or
BF parameter result in a line being drawn
from the first pair of X, Y co-ordinates to the
second pair. LINE statements concluded
with a B alone means 'draw a rectangle
(Box) in outline only', the pairs of X, Y
co-ordinates defining the diagonally oppo-
site corners of the rectangle. The BF
parameter on the LINE statements means
'draw and Fill this rectangle (Box) with the
current foreground colour'. Only rectangles
can be automatically filled with colour.
Other shapes, such as the circle of sun-
shine and the roof of the house, need to be
PAINTed after drawing the outline. The
area to be PAINTed needs to be completely
outlined with a defined single colour border
otherwise the 'paint' will spread alarmingly!

Listing 1

```
10 REM DRAW PICTURE OF A HOUSE FOR SLIDE PUZZLE PROGRAM
20 PCLEAR4:PMODE3,1:COLOR3,1:SCREEN1,0
30 REM GREEN GRASS
40 PCLS
50 REM BLUE SKY
60 LINE(0,0)-(255,103),PSET,BF
70 REM MAKE HORIZON LIGHTLY JAGGED AS PER GRASS GROWING
80 FOR X=0 TO 254 STEP 2
90 N=RND(2):IF N=1 THEN PSET(X,104)
100 NEXT X
110 REM YELLOW HOUSE BLOCK
120 COLOR2,1:LINE(60,64)-(199,179),PSET,BF
130 REM ROOF OUTLINE
140 COLOR4,1
150 LINE(80,32)-(180,32),PSET
160 LINE(180,32)-(202,63),PSET
170 LINE(202,64)-(56,64),PSET
180 LINE(56,63)-(80,32),PSET
190 REM PAINT ROOF RED
200 PAINT(126,48),4,4
210 REM RED CHIMNEY
220 LINE(120,20)-(135,32),PSET,BF
230 REM BLUE DOOR
240 COLOR3,1
250 LINE(112,120)-(147,179),PSET,BF
260 REM FOUR RED CURTAINED WINDOWS
270 COLOR4,1
280 LINE(68,76)-(101,107),PSET,BF
290 LINE(156,76)-(189,107),PSET,BF
300 LINE(68,130)-(101,161),PSET,BF
310 LINE(156,130)-(189,161),PSET,BF
320 REM OPEN THE CURTAINS
330 COLOR3,1
340 LINE(78,76)-(91,107),PSET,BF
350 LINE(166,76)-(179,107),PSET,BF
360 LINE(78,130)-(91,161),PSET,BF
370 LINE(166,130)-(179,161),PSET,BF
380 REM YELLOW OUTLINED DOOR KNOB
390 CIRCLE(138,156),4,2
400 REM YELLOW SUNSHINE
410 CIRCLE(216,22),10,2
420 COLOR2,1
430 PAINT(216,22),2,2
440 REM EDGE TILES IN RED
450 COLOR4,1
460 FOR X=0 TO 192 STEP 64
470 FOR Y=0 TO 144 STEP 48
480 LINE(X,Y)-(X+63,Y+47),PSET,B
490 NEXT Y
500 NEXT X
510 REM SET UP BLANK TILE IN YELLOW, TOP LEFT
520 COLOR2,1
530 LINE(2,1)-(61,46),PSET,BF
540 IF INKEY#="" THEN540 ELSE LIST
```


Listing 2

```

600 REM SLIDE PUZZLE - FAM D'ARCY - MAY 1986
610 PCLEAR8
620 DIM BS(88),MS(88)
630 CS=0:FX=64:FY=48:DX=0:DY=0:AUX=CHR$(94):AD=CHR$(10):AL=CHR$(8):AR=CHR$(9)
:MV=10
640 CLS:PRINT"SLIDE PUZZLE"
650 PRINT:PRINT"USE ARROW KEYS TO MOVE TILES"
660 PRINT:PRINT"OTHER KEYS ARE: * TO RESTART; * TO QUIT;"
670 PRINT"C TO CHANGE COLOUR SET"
680 PRINT:PRINT"PRESS A KEY TO START"
690 M=RND(MV):K=INKEY$:IF K="" THEN 690
700 BX=DX:BY=DY
710 PMODE3,1
720 REM COPY BLANK TILE TO ARRAY
730 REM SLIDING TAKES PLACE IN PAGES 5-B
740 GET (BX*PX, BY*PY) - ((BX*PX)+PX-1, (BY*PY)+PY-1), BS, B
750 PMODE3,5:SCREEN1,CS
760 FOR N=1 TO 4:FCOPY N TO N+4:NEXT N
770 REM NUMBER OF MOVES TO MIX UP PUZZLE
780 M=RND(MV)*6
790 LD=0:BX=DX:BY=DY
800 FOR I=1 TO M
810 MX=BX:MY=BY
820 D=RND(4):IF D=LD THEN 820
830 ON D GOTO 840,850,860,870
840 MY=BY+1:LM=2:GOTO 880
850 MY=BY-1:LM=3:GOTO 880
860 MX=BX+1:LM=4:GOTO 880
870 MX=BX-1:LM=5
880 IF MX<0 OR MX>3 OR MY<0 OR MY>3 THEN 810
890 GOSUB 1040
900 LD=LM:NEXT I
910 REM READY TO BE UNSCRAMBLED
920 K=INKEY$:IF K="" THEN 920
930 IF K="C" THEN CS=1-CS:SCREEN1,CS:GOTO 920
940 IF K="*" THEN 760
950 IF K="*" THEN PMODE0,1:PCLEAR4:END
960 MX=BX:MY=BY
970 IF K=AUX THEN MY=BY+1:GOTO 1010
980 IF K=AD THEN MY=BY-1:GOTO 1010
990 IF K=AL THEN MX=BX+1:GOTO 1010
1000 IF K=AR THEN MX=BX-1
1010 IF MX<0 OR MX>3 OR MY<0 OR MY>3 THEN 920
1020 GOSUB 1040
1030 GOTO 920
1040 GET (MX*PX, MY*PY) - ((MX*PX)+PX-1, (MY*PY)+PY-1), MS, B
1050 PUT (MX*PX, MY*PY) - ((MX*PX)+PX-1, (MY*PY)+PY-1), BS, PSET
1060 PUT (BX*PX, BY*PY) - ((BX*PX)+PX-1, (BY*PY)+PY-1), MS, PSET
1070 BX=MX:BY=MY
1080 RETURN

```

Listing 3

```

20 PCLEAR8:PMODE3,1:COLOR3,1:SCREEN1,0
30 FOR N=1 TO 4:PCOPY N TO N+4:NEXT
440 REM EDGE TILES IN RED
450 COLOR4,1
460 FOR X=0 TO 192 STEP 64
470 FOR Y=0 TO 144 STEP 48
480 LINE(X,Y)-(X+63,Y+47),PSET,B
490 NEXT Y
500 NEXT X
510 REM SET UP BLANK TILE IN YELLOW, TOP LEFT
520 COLOR2,1
530 LINE(2,1)-(61,46),PSET,BF
540 IF INKEY$="" THEN 540 ELSE LIST

```

Classified

NEW SOFTWARE FIRM sells business software, also software for everybody else. send a 17p stamp for free information pack. Buzz Software, 15 St Stephen Road, Penketh, Warrington, Cheshire.

DRAGON 32 joystick, Dragoniser books, mags, £70 worth of software, own box, £75 ono. Telephone Rochdale 54997.

DRAGON owner wishes exchanging games with others. Contact P. Rishi, 1 High Ash Close, Exhall, Coventry CV7 9PQ. Telephone 0203 366842. After 4 pm.

JOYSTICK CONVERTERS, 2 Atari type joysticks to Dragon, £5.95. SAE for details, cheque/PO to J. & S. Electronics, 69 Manor Road, Rushden, Northants NN10 9EX.

DRAGON 64, in box, cassette recorder, cub monitor (without lead), six games, all good condition, £225. Telephone 0660 20434.

CASTLE DRACULA, the classic text adventure, now available for your Dragon, £5. Murgurt Software, 22 Warwick Road, Olton, Solihull, West Midlands.

DRAGON 32 plus Dragon disk drive, two joysticks, Seikosha GP-100A printer plus tapes, disks, cartridges galore, £300 complete or will split. Telephone 0844 208888.

MAGBASE. Don't waste any more time searching through past issues of Dragon User, Magbase gives instant access to records of all letters, articles and listings since issue 1 (600 records). Further details sae from Pulser Software, 36 Foxhill, High Crompton, Shaw, Oldham OL2 7NQ.

DRAGON 32, 22 cassettes, Chess, Cribbage, Golf, Graphics, Spreadsheet, Computavoice, others, 1 cartridge, manual and 8 instruction books all different, 2 joysticks, recorder, 37 Dragon magazines, £100 ono.

REPAIRS. For a free estimate send your Dragon to: M. P. Electronics, The Laurels, Wendling, Dereham, Norfolk. Telephone 0362 87327.

DRAGON 32/64 repairs, £25 + postage, Micro-Tek Electronic Services, 52A Beulah Road, Walthamstow, London E17. Telephone 01-520 6414, 0860 323288.

DRAGON 32, as new plus cartridge and cassette games, £65 ono. Telephone Brierley Hill 71946.

DRAGON 32, boxed, reason for sale, bought 64, £45. Telephone 0935 72237.

FLEX. The Curse of Camarc. A classical style text adventure on FLEX disc. Over 100 atmospheric locations and over 20 dynamic characters. 47K of machine code with 10K used from disc with Save-Load to disc etc. Price £10 inc p&p. K. Hunter, 46 Greenhill Road, Elton, Bury, Lancs BL8 2LL.

WORLD BOXING game for Dragon 32, 10 opponents, hi-res graphics, joystick/keyboard, £5 from David Beckwith, 3 Cholsey Road, Siege Cross, Thatcham, Berks.

RIBBONS for Seikosha printer GP100, £4 each, others send SAE with requirements. D. Watts, 33 St Andrews, Amington, Tamworth, Staffs.

DRAGON 32 with disk drive, all boxed, unused, £120 ono, may split, light pen, £10.

Here's my classified ad.

(Please write your copy in capital letters on the lines below.)

£0.20	£0.40
£0.60	£0.80
£1.00	£1.20
£1.40	£1.60
£1.80	£2.00
£2.20	£2.40
£2.60	£2.80
£3.00	£3.20
£3.40	£3.60
£3.80	£4.00

Please continue on a separate sheet of paper

I make this words, at 20p per word so I enclose £.....

Name

Address

Telephone

Please cut out and send this form to: Classified Department, Dragon User, 12-13 Little Newport Street, London WC2H 7PP

Expert's Arcade Arena

Write to 'The Expert' at Dragon User
12-13 Little Newport St, London WC2H 7PP,
with all your arcade tips and hints.

GOOD DAY to you all and welcome to the fourth arcade column and once again may I thank you for all the letters you have sent. I have bought a warehouse to store them both in so fear not for their safety. However, should you ever wish to see anything you send me again please send an SAE or alternatively leave ten thousand pounds in a hollow tree in Dagenham by Monday or I'll start sending them back. In bits. Heh, heh, heh.

Firstly the winner of a year's subscription is a Mr David Barclay of Dumfries, Scotland (you know, the pointy bit up the top with the haggis and the lochs) who correctly named pictures (a) and (b) as *3-D Seiddab Attack* and *Horace Goes Skiing* respectively. Congratulations David and tough (censored) to the rest of you, especially those of you who can't spell *Seiddab*.

Now then, moving at the speed of light on to *Total Eclipse* (which isn't strictly an arcade game but still seems to be the subject of several thousand letters to me) and two different ways of helping yourselves along with this game.

Firstly, you write to Eclipse-Fenmar who expressed an interest up at the recent 6809 convention in selling saved games for a couple of quid at various points in the game. This sounds to me like a pretty groovy idea but it's up to you to nag them!

If you don't feel like doing that then there is another solution. Over to J. Brown of Buckinghamshire with his "Total Eclipse Savegame Editor". Mr Brown's program will only run on a Dragon 64 and as I only possess a Dragon 32 (unless any company out there really feels benevolent and wants to butter up a writer!) I have not tested it.

Mr Brown has sent complex instructions but the program is very easy to operate and they're not really necessary. Here are the pertinent excerpts:

"The program only works on a D64 in 64k mode but can be typed in on a 32. Before loading however the 64k mode must have been selected . . . For use with option 8, locations 32115 to 32122 for investing, 32134 to 32136 will change the number of shards, disks, and pills you are carrying . . . Within option 9 'Q' returns you to the memory and 'S' will hold the listing or when held down make the listing slower . . . The maximum number of credits is 4290067295. Any more and the program will crash!"

Thank you very much, Mr Brown; some more *Total Eclipse* next month, now to *The Dark Pit* and the map from Simon Dickson. To be brutally honest I think that there's an error on this map as looking at it there seems to be no way to get to the exit, but my copy is mangled and so until my new one

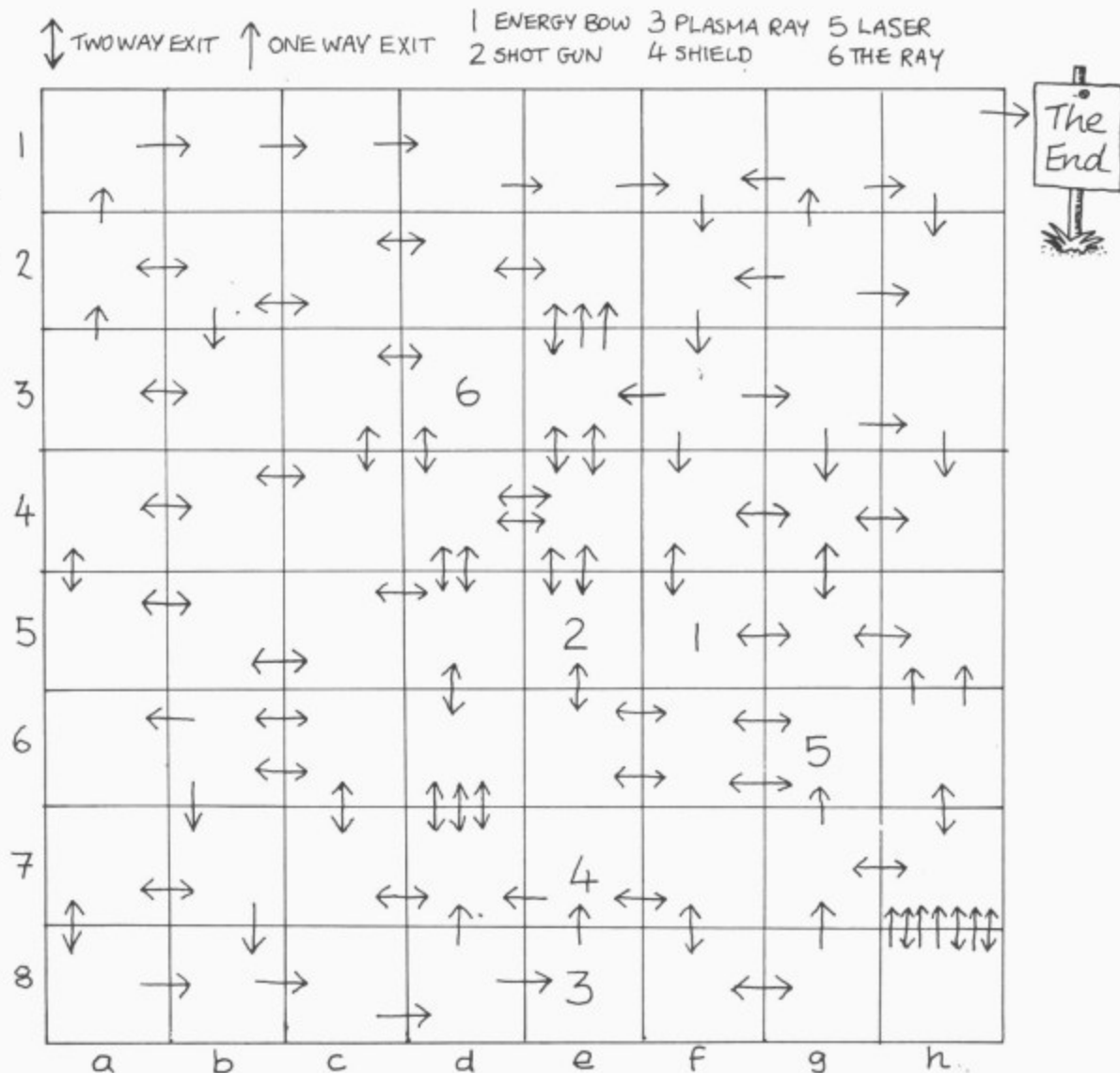
arrives I can't test it. However, rather than hold it back from you I've decided to go public so here's the map and please, don't send me any more maps of this, or of *Jet Set Willy* as although the thought is very nice, they're no longer necessary! However, do keep sending maps of any game you have (*Brocks Kingdom*, anyone?), I have even given consideration to publishing maps of adventure games (look out Mike Gerrard, this is a takeover bid) but please, please, if you want them returned make sure your name and address is on the map as well as the letter you send with it! Better still, keep a photocopy.

Moving on, an appeal now from Jonathan Harrap of Oxon: "In *Time Bandit* I have successfully completed 4D on 'The Time Gate' and have been returned to 1A, but I failed to do this on any of the other screens so I have not found out what the secret message is. I am now completely bored and thoroughly sick with this game. Can you please tell me what the message is?" Answer on a postcard to the usual address!

And so to a man who is becoming a co-writer on this column!! Mr M. R. Vince who reliably informs me that his name is "Mick"/"Mike the Brave" or "Hey You" . . . doesn't explain the 'R' Mick! Still, Mick tells us that the access code for *Beanstalker* is

THE DARK PIT

MAPPED
by
SIMON
DICKSON



```

FORI=1T012:READR(I):NEXT FORI=1T07:REHOB(I):BKI: NEXT
20 REM*****
30 REM*****total eclipse*****
40 REM***** editor *****
50 REM***** by j brown *****
60 REM*****C) supendata*****
70 REM*****
80 Z=CHP(120):CLS:PRINT6,"total"/Z:"eclipse"/Z:"editor":
90 PRINT75,"by"/Z:"j"/Z:"brown":
100 PRINT125,"menu":
110 PRINT160,"1) POSITION"
120 PRINT192,"2) CASH"
130 PRINT224,"3) EQUIPMENT"
140 PRINT256,"4) CARGO"
150 PRINT288,"5) QUIT"
160 PRINT320,"6) LOAD"
170 PRINT352,"7) SAVE"
180 PRINT384,"8) EDIT BYTE"
190 PRINT416,"9) LIST MEMORY"
200 SCREEN 0
210 AS=INKEY:IFAS=""THEN210
220 PRINT480,"OPTION":AS:
230 IF ASC(AS)<49 OR ASC(AS)>57 THEN 200
240 ON ASC(AS)-48 GOTO 250,410,500,740,1390,850,970,1140,1230
250 REM POSITION
260 CLS
270 PRINT88,"X CO-ORD. ",PEEK(32266)
280 PRINT92,"Y CO-ORD. ",PEEK(32267)
290 PRINT96,"SECTOR. ",PEEK(32304)
300 PRINT96,"GALAXY. ",PEEK(32307)
310 PRINT160,"":INPUT"X":X:IFX<10RX>6THEN310
320 POKE32266,X
330 PRINT160,"":INPUT"Y":Y:IFY<10RY>6THEN330
340 POKE32267,Y
350 PRINT160,"":INPUT"SECTOR":S:IFS<10RS>10THEN350
360 POKE32304,S
370 PRINT160,"":INPUT"GALAXY":G:IFG<10RG>12THEN370
380 POKE32307,G
390 INPUT"GOOD Y-1,N-0":AN
400 IF -Y THEN90 ELSE 260
410 REM CASH
420 CLS:PRINT USING"% %%%,%%,%%,%%" CASH",PEEK(32053)*16777216+PEEK(3205
4)*65536+PEEK(32055)*256+PEEK(32056)
430 PRINT94,"":INPUT"CASH":CS:IF CS<0 OR CS>109558404991THEN430
440 C1=INT(CS/16777216):CS=CS-C1*16777216
450 C2=INT(CS/65536):CS=CS-C2*65536
460 C3=INT(CS/256):CS=CS-C3*256
470 POKE32053,C1:POKE32054,C2:POKE32055,C3:POKE32056,CS
480 INPUT"GOOD Y-1,N-0":AS
490 IF -AS THEN 80 ELSE 430
500 REM EQUIPMENT
510 GOSUB 630
520 PRINT256,"ITEM (INITIAL)":INPUT AS#
530 FORI=1T07
540 IF AS#LEFT$(B#I),1) THENIT=I:I=10
550 NEXT
560 IF I=9 THEN520
570 PRINT256,"QUANTITY MAX(B#I):")::INPUTQT
580 IF QT<0 OR QT>B#I THEN 570
590 POKE32085+IT,QT
600 GOSUB 600
610 INPUT"GOOD 1-Y,0-N":AS
620 IF -AS THEN 80 ELSE 510
630 CLS:LC=32086
640 FORI=1T07
650 PRINTB(I):B#I):PEEK(LC)
660 LC=LC+1
670 NEXT:RETURN
680 REM CARGO
690 CLS:LC=32093
700 FORI=1T012
710 PRINTB(I):PEEK(LC)
720 LC=LC+1:NEXT
730 RETURN
740 GOSUB600:PRINT416,"ITEM (INITIAL)":INPUTAS#
750 FORI=1T012
760 IF AS#LEFT$(B#I),1) THEN IT=I:I=10
770 NEXT
780 IF I=13 THEN 740
790 PRINT416,"QUANTITY MAX(255)":INPUTQT
800 IF QT<0 OR QT>255 THEN 790
810 POKE32092+IT,QT
820 GOSUB 600
830 PRINT416,"GOOD 1-Y,0-N)":INPUTAS#
840 IF -AS THEN 80 ELSE 740
850 REM LOAD
860 CLS:PRINT80,"save"/Z:"game"/Z:"loader":PRINT832,"motor"/Z:"on":
870 MOTORON:AUDIOON
880 PRINT86,"Position"/Z:"tape":
890 PRINT128,"Press"/Z:"any"/Z:"key"/Z:"when"/Z:"ready":
900 AS=INKEY:IFAS=""THEN900
910 MOTOROFF
920 PRINT192,"Press"/Z:"play"/Z:"then"/Z:"any"/Z:"key":
930 AS=INKEY:IFAS=""THEN930
940 PRINT856,"loading":
950 CLOADM
960 GOT050
970 REM SAVE
980 CLS:PRINT80,"save"/Z:"game":
990 MOTORON:AUDIOON
1000 PRINT832,"motor"/Z:"on":
1010 PRINT86,"Position"/Z:"tape":
1020 PRINT128,"Press"/Z:"any"/Z:"key"/Z:"when"/Z:"ready":
1030 AS=INKEY:IFAS=""THEN1030
1040 MOTOROFF
1050 PRINT192,"PRESS PLAY AND RECORD THEN PRESSANY KEY":
1060 AS=INKEY:IFAS=""THEN1060
1070 PRINT256,"saving":
1080 CS=VEM"CDATA000":31919:32767:0
1090 PRINT830,"reposition"/Z:"tape":
1100 MOTORON
1110 AS=INKEY:IFAS=""THEN1110
1120 MOTOROFF
1130 GOT0 50
1140 REM BYTE EDITOR**
1150 CLS:INPUT"LOCATION(31919 TO 32767)"/LC
1160 IF LC<31919 OR LC>32767 THEN 1150
1170 PRINT832,"PRESENT DATA IS":PEEK(LC)
1180 PRINT964,"NEW DATA":INPUTND
1190 IF ND<0 OR ND>255 THEN 1150
1200 PRINT896,"NEW DATA AT"/LC:"IS":PEEK(LC)
1210 PRINT128,"GOOD 1-Y,0-N)":INPUTAS
1220 IF -AS THEN 50 ELSE 1140
1230 REM MEMORY LIST
1240 BT=31919:HE=32767
1250 CLS:INPUT"START":ST
1260 IF ST<31919 OR ST>32766 THEN 1250
1270 PRINT832,"END":INPUTED
1280 IF ED<ST OR ED>32767 THEN1270
1290 FORI=ST TO ED
1300 P1=PEEK(I):P2=PEEK(I)*256+PEEK(I+1):P3=PEEK(I)*65536+PEEK(I+1)*256+PEEK(I+2)
1310 PRINTUSING"***** ** *****":I,P1,P2,P3
1320 FOR Z=1T0080:AS=INKEY:
1330 IF AS=""THENNEXTZ
1340 IF AS="S" THEN GOSUB1370
1345 IF AS="Q" THENZ=20
1350 NEXTI
1360 FORZ=1T02000:NEXT:GOTO50
1370 AS=INKEY:IFAS=""THEN1370
1380 RETURN
1390 DATA "FOOD","TEXTILES","MIDIE ARMS","MEDICINES","CHEMICALS","ORES","URANIUM",
"EXPLOSIVES","LUXURIES","GEMS","HI-TECHS","NARCOTICS"
1400 DATA "CARGO HOLD",9,"FUEL TANK",5,"IR NO LASER",7,"HYPERDRIVE",1,"DRILLING KI
T",1,"RST. DRILL",1,"WELLCAP",1

```

Register and that he can't go any further and that holding down CLEAR and N gives extra lives up to a total of 999. He has asked me to publish his address so that he can enter into communication with other (dare I use the word) hackers but I'm not sure if this is such a good idea as then people might write to him instead of me and I'd be all alone in the world and go slowly mad here in my padded cell. However, I will publish his address, as soon as he sends me his phone number! This is not, you understand for any solicitous reasons, but so that I can clarify some points that have arisen from his letters, although, perhaps we could go out for a quiet drink afterwards, and then back to my penthouse flat for a wild night of loud music, gambling, and, of course, hacking. And we could always have a **aspidistra** too! (One for the editing pen there Helen!). (*This man reads minds — Ed.*)

Sorry, I forgot myself there, some more clues and hints for games, in no particular order, and from a Mr Anart Petel of Coventry.

Crazy Painter: On letting the space invader reach the bottom, when your paint reaches the zero leave it and you'll have an

infinite supply. (I can't get this to work, Anart... maybe someone else can!)

Hungry Horace: The guard can't get you when you're both in the tunnel so you can pass straight through him.

Tim Love's Cricket: Using a "Quickshot II" joystick, when playing against the computer, position the bowler as far down as you can, then position the bowler's arm in a top-left position and bowl. A large percentage of the time you'll be able to bowl a full toss at the top of the off stump and get it out.

Finally, also from Anart, he says if you load games with the command "AUDIO ON:CLOADM:AUDIO ON" you can insert a music cassette in the player and zap along to, and I quote, "Talking Heads, Simple Minds or Tom-Tom Club". Personally, I find that I play best to Tangerine Dream, Robert Wyatt, Tom Waits (*Swordfish Trombones* and *Rain Dogs* especially) and any early David Bowie. Has anyone found the ultimate record to play along with? If so, you know the address.

Now then, to a topic which has been winding me up for some months now: the heroes in games, and the prejudice in-

involved in picking them. Quite simply, and there is not a hint of a joke here, I mean this: I am pretty fed up with every game's hero being both white and male and getting the girl at the end of the game. I have never managed to impress women by killing off a race of space invaders, I don't think many women are interested in a cosmic space hero as a partner for life! How about a little of sensitivity, how about a black lesbian heroine? How about racism and sexism?

Right, that should start the letters flowing. If you agree or disagree, or you know of games which break the convention, write to me, and together we'll lead the Dragon world to revolution.

Or at least to a little coffee shop I know off Leicester Square. (*Back to square one — Ed.*)

That's about it for this month. Please keep writing, tell me what you'd like to see, stop sending me your high scores, I'm not prepared to massage your egos, and let's try and get the Dragon games crew thinking about what it really wants to play, remember, software writers read this column too!!

Okay, let's do it to them before they do it to us.



I HAVE to admit to being all at sea this month, and the blame for that has to go to Microdeal and their new adventure, *Aquanaut 471*, but more of that later. First to reader James Boyden and a query he's got on an adventure called ... wait a minute, *Aquanaut 471*? Hang on, James, you might at least wait for me to review them before you start getting stuck in them. James wants to know where the seaweed is. I've half a mind not to tell him. (Those who said I've only half a mind anyway, kindly leave the page.) Have you encountered the Mutant yet, James? If you can get past that beastie then go W-N-E-S TO REACH THE SEAWEED — and then you've got to know how to get it: SRETTUC TNALP HTIW TI TUC.

Syzygy

James also wants to know how to get to the planet on *Syzygy*, the answer to which was given last month, but in case you missed it (how dare you!) you enter the co-ordinates then pull the lever, the co-ordinates for the planet being 0-4-1-5 (and that's the right way round just for a change). Finally on *Vortex Factor*, how do you open the safe? You send an SAE to Tom Wilkinson of 13 Shaftesbury Ave, Hull, Humberside, that's what. No, Tom isn't a safecracker, or at least I don't think he is, but he has just written to me claiming his *Dragon User* merit mark for having solved *Vortex Factor*.

Mr. A. M. Norris of 10 Molescombe, Fairwater, Cwmbran, Gwent NP44 4HE wants to swop or sell *Syzygy*, *The Hulk* and *El Diablero*, if anyone is interested, while Alex Illegible-Signature of Redruth, Cornwall wants to know how to pass the force field on the garden planet. A good job I know he means *Trekboer*, in which protection from the force field is given by TELUMA EHT.

A *Trekboer* tip from P. Sheppard of Cheshunt, for people wondering how to deal with the second spider. The answer: REDIPS DNOCES ON SI EREHT. To make sure of that you must deal with the first spider properly, and take it when dead to MOOR SODNEX-XE EHT, then EDIS-TUO NOTTUB EHT SSERP. This reader also asks which *Dragon* adventures will also run on the Tandy computer, and I think it would be a good idea if we could compile a list of those for some future column, so

can all Tandy owners out there write in with a list of those *Dragon* adventures you know for sure will run on the Tandy, for the benefit of everyone.

Yet more help needed on *Trekboer*, this time by Adrian Hall of Huddersfield, and how to stop the Xendos flower from dying is the first question. Don't plant it too early in the game, Adrian, as it's almost the last thing you do. Secondly, how to get the ice to water the flower when necessary: TEKNALB EHT NI TI YRRAC. In *Caverns of Doom*, how to build the raft when you've got the tools, hammer, nails, saw and beams: EPOR EHT DEEN LLITS UOY. And how to explore underwater without running out of air: PU-N-WN-N-N-N-D OG.

If anyone knows how to get over the oil fire on the third level of *The Poseidon Adventure*, can they write and tell Stephen Heraton, 4 Bankcroft, Langton, Preston, Lancs PR4 5AL, and Stephen also wants to know how to obtain food from the dinner droid in *Juxtaposition*, which is straightforward enough: "DOOF EM EVIG" DIORD RENNID OT YAS. You don't even need to say please.

Mr B. W. Le Roux writes to me on his flash Amstrad PCW from April Cottage, Cliff End Lane, Pett Level, Nr Hastings, East Sussex TN35 4EF, and has come up with a potential money-making scheme. He says I should print pages of clues every month but make them coded instead of merely backwards — then I can make a few bob by selling the code-books. Nice thinking, Mr Le Roux, but I wonder if the new editor would let me get away with it? I can't give a clue backwards, forwards, cryptic or in binary for this reader's problem in *Syzygy*, as he's blundered into a big forest where the light is a strange colour and he can't do anything. Can anyone shed any un-strange light on that problem? The same reader is also having light trouble in *Caverns of Doom*, wondering how to mend the broken lamp. He says he's tried using the oil to un-rust it, the rope to improvise a wick, and has even taken the pickles out of the jar to try to put the lamp in there to shield it from draughts, but all to no effect. I'm not surprised, either. Why? EREHWESLE PMAL NEKORBNU NA S'EREHT. Why hasn't this adventurer discovered it yet? It looks from the map as if he hasn't MOOR LLAMS EHT NI LLAW EHT DENIMAXE. Mr Le Roux also offers help on *Pettigrew's Diary*, amongst others,

which not many people claim to have finished.

Where is the bomb hidden in *Wings of War*, asks A. Court of Birmingham. RAL-LEC EHT NI, says I, where you go HTRON TSAE HTUOS HTUOS then RENIATNOC XIF with HCNERW DNA MUINIMULA and finally TSAE OG.

All this backwards writing is taking its toll, so I'll give myself a break by looking at *Aquanaut 471: Under the Doomed Sea*, another of Microdeal's imported American adventures converted for the *Dragon*, and also available for the Tandy. This takes place in the 21st century, where Jacques Cousteau's vision of underwater cities has become a reality, and you play the part of a high-ranking member of the Oceanic Federation. It seems there's trouble at t'Trident Dome, as that's where you're headed when the adventure begins, though you won't know what the trouble is till you've contacted Huey-14, the Dome's service droid, who sent out the SOS.

You only have a limited number of moves to find the Dome when travelling around the various underwater locations, but luck led me to it first time — bad luck, I think, as this then brings you to the first of what might be called arcade games, if arcades had ever been so primitive. You have to use your joystick to manoeuvre your submarine across the screen through bubbles floating to the surface to reach the Dome's landing spot. It's awkward to do, and rather annoying if, like me, you'd been looking forward to getting stuck into a new adventure. Once you're through, be sure to save your game so you don't have to go through the silly game again.

Underwater city

Here the adventure proper does begin, and you can start to map out the underwater city, wondering what you do with the lead pipe and the memory grid that you soon find. Not that you worry for long as, oh no, it's another 'arcade' game ... just when it was starting to get interesting, too. This time you move your little self up the screen through a maze past a series of moving robots.

I'm afraid I found these arcade elements tedious and disruptive in what would otherwise be a promising adventure with the high standard of moving graphics we've come to expect from the likes of *Trekboer* and

others. No doubt it will be popular with many of you, but it's not one I intend to load up too often. Let's end the mini-review with a clue, though. What to do with the tool-chest? ECIWT KOOL.

Back to an old favourite, and I don't mean D. Collins of Biggleswade, but the adventure he or she is asking about, *El Diablero*. What do you do with the desert beetles? BMOT EHT NI MEHT PORD. And with the seeds? HTAP NIATNUOM EHT NI MEHT TNALP. And the mat? SDAERHT EHT ENIMAXE. And how to get back from the cave when you've dreamed yourself there? EKAWA. Help is available from this same reader on *Franklin's Tomb*, *Mansion Adventure*, *Dragon Mountain*, *Calixto Island*, *Don't Panic*, *Ring of Darkness*, *Mission 1* and *Mystery of the Java Star*, so SAE if you're interested to D. Collins, 8 High Road, Broom, Biggleswade, Beds SF18 9NJ.

Envelopes

On the subject of stamped addressed envelopes, don't forget to send them if you're writing to anyone asking for help, and that goes if you're writing to me and want a personal reply. No SAE means the query will get dealt with in the next available issue of the magazine, and depending on publication dates that could mean a wait of two or three months for you.

From David Walshaw, a citizen of Wakefield, come several pleas, plus a map and clues on *Dragon Mountain*. To kill a demon in this older adventure: REGGAD RO DROWS CIGAM ESU. And the Elf? NEDLOG GNIHTYNA HTIW DEBIRB EB NAC. Amongst David's problems is the mermaid in *Sea Quest* — well, I don't expect you come across many in Wakefield, do you?

So you wouldn't know what she wants: RORRIM EHT.

Anyone got a spare Pi-Man? Michael Higgins of 18 Westland Drive, Glasgow G14 9NT would like to play *Pimania* but can't get hold of a copy, so if you've finished with yours and would like to sell or swap then contact Michael direct. Alistair Grant lives near Droitwich but is also lost in space in *Lost in Space*. He keeps getting caught by the security robot, but even when he manages to make it to the room with the grill he doesn't know what to do when he gets there. Use your head, Alistair, or at least that hole in the front of it that you shovel food down: EVIF RO RUOF EERHT OWT ENO YAS.

A letter has arrived from Michael Edwards, alias Broomsoft, to show that he doesn't just write adventures but solves them as well. He's sent in a complete solution to *Black Sanctum*, so if anyone wants a copy of that just write in to me with SAE. Meanwhile here are a few of the

problems dealt with for you:

- 1) Can't get through the locked door? TFOL EHT OT OG
- 2) Can't pass caretaker? ENIW EHT PORD
- 3) Can't find music to play? NIAGA ESACKOOB ENIMAXE

Michael has *Franklin's Tomb*, *Pirate Adventure* and *Ring of Darkness*, which he'd like to swap for *El Diablero*, *Shenanigans*, *Sea Quest*, *Return of the Ring*, *Calixto Island* (graphics preferred), *Lost in Space* and *Fishy Business*. Any offers? Write to 30 Broomhills, Welwyn Garden City, Herts AL7 1RF.

Finally a big thanks to Simon Hargrave of Gloucestershire for his solutions to *Juxtaposition* and *Trekboer*. I've already made the last one available to readers, so let's add *Juxtaposition* to the list of freebies, as well as *Black Sanctum*. Don't say we never give you anything! We might even give you another adventure column next month, if you behave yourselves.

Adventure Contact

To help puzzled adventurers further, we are instituting an Adventure Helpline — simply fill in the coupon below, stating the name of the adventure, your problem and your name and address, and send it to Dragon User Adventure Help-

line, 12/13 Little Newport Street, London WC2H 7PP. As soon as enough entries have arrived, we will start printing them in the magazine.

Don't worry — you'll still have Adventure Trail to write to as well!

Adventure

Problem.....

.....

Name

Address.....

.....

Adventure Contact

Adventure: Vortex Factor.
Problem: How do I open the safe? How do I unlock the door at the North? How do I get the Time Machine to work? **Name:** John Foster. **Address:** 94 The Oval, Firth Park, Sheffield S5 6SP.

Adventure: Juxtaposition.
Problem: Where is the Altarian Orchid and what is the use of the seed? **Name:** Paul Davidson. **Address:** 211 Dunminning Road, Glarryford, Ballymena, Co. Antrim, N.I. BT44 9PP.

Adventure: Juxtaposition.
Problem: How the *** do you get past the Nighteye Droid? **Name:** Bob Riding. **Address:** 24 Wittmills Oak, Buckingham, Bucks MK18 7BH.

Adventure: 1) Strange Oddysey. 2) Escape from Pulsar 7. 3) El Diablero. **Problem:** 1) What use is the Rigilian Dia-Ice Hound? Does the pickaxe help? 2) How do I mend

the lathe? How do I open the locker in the maze? How do I make a cake? 3) Where do I find the twig? I have already spoken to the lizard. **Name:** Robin Hemmings. **Address:** 8 Ingleby Road, Wigston, Leicester LE8 1DQ.

Adventure: Return of the Ring. Problem: Can't get books of skulls from Mutant in forest moon. **Name:** Mark Ryan. **Address:** 5 Sully Terrace, Penarth CF6 2DS.

Adventure: Syzygy. Problem: I can't find the teletransporter. I can't kill Vader. **Name:** Cristina Garcia-Verdugo. **Address:** c/Illescas No. 145, 8ºB 28024 Madrid, Espana.

Adventure: Trekboer. Problem: How do you get to the planet's surface? How do you see the dark room and how do you open the access panel? **Name:** Paul Everitt. **Address:** 1 Windmill Road, North Anston, Nr. Sheffield S31 7EH.

Adventure: El Diablero. Problem: I have been everywhere I can, but I can't do anything. Help! **Name:** Jason Coomes. **Address:** 52 Springfield Avenue, Holbury, Southampton SO4 1LP.

Adventure: Return of the Ring. Problem: How do I kill the Genie and the Trog? **Name:** Roger Pigott. **Address:** 27 Welbeck Road, Walkley, Sheffield S6 5AY.

Adventure: Juxtaposition. Problem: Where do I find the red ore? How do you get to move N,S in Power Pyramid? Where do I find the space? How do I cross the river into Baron Blue's land? I need a hint sheet and a map. **Name:** Michael Pointing. **Address:** 82 Raymond Road, Bedminster, Bristol BS3 4QW.

Adventure: Juxtaposition. Problem: Cannot find the mask. **Name:** James Woolard. **Address:** 6 Boxford

Court, Haverhill, Suffolk.
Adventure: Return of the Ring. Problem: How do you breathe on moon forest? How do you get hit points and more passes? **Name:** Karl Lawson. **Address:** 8 Walworth Grove, Primrose, Jarrow, Tyne & Wear NE32 5YP.

Adventure: Jerusalem Adventure 2. Problem: How do I get through the golden gate? What are the magic words? **Name:** Julian Griffin. **Address:** 1 Higgs Close, Rowlatts Hill, Leicester LE5 4LY.

Adventure: Shenanigans. Problem: I can't get the pole into the cave. **Name:** Mark MacMillan. **Address:** 22 Trinity Place, Deal, Kent CT4 9HH.

Adventure: Temple of Vran/The Final Mission. Problem: Can't get past the security guard, or through the double doors. **Name:** Ian Howie. **Address:** 20 Hallfield Road, Aberdeen AB2 6RQ.

Mini Maths

Gordon Lee sets the puzzles — but who will find the totals?

FROM TIME to time on this page we present a series of unrelated puzzles that the reader might be interested in tackling, purely for his (or her) own enjoyment. Here are five such puzzles, but the solver should proceed with caution as not all of them are necessarily soluble by the use of the computer.

1. Using each of the nine digits 1 to 9, once and once only, arrange them to form a perfect square. For example, one such arrangement might be 382945761, the square of 19569. There are many other arrangements of the nine digits possible, but can you find a) the lowest possible number, and b) the highest?

2. As in question 1, use the nine digits 1 to 9, but this time arrange them to form two nine-digit *prime* numbers: a) the lowest possible, and b) the highest.

3. A farmer has a circular field with a diameter of 200 feet. The field is enclosed by a fence. Inside this field tied to the perimeter fence is a goat on a length of rope. If the rope is long enough to allow the goat to graze exactly half the area of the circular field, how long is the piece of rope? (You should assume that the goat can reach exactly to the end of its tether).

4. The number 4 is very interesting. It is a perfect square, and the two integers each side of it, 3 and 5, are *both* prime. Can you find the next highest square number that has this property?

5. Consider the following alphamatic:

$$\begin{array}{r} \text{DRAGON} \\ \hline \text{USER} \end{array} = \star \star$$

In alphamatics, each letter represents a certain digit, wherever it occurs. Similarly, unlike letters represent unlike digits. So in the puzzle given we have a six-digit number with all digits different (as represented by the word 'DRAGON'), divided by a four-digit number, also with different digits ('USER'). Note however that the second digit of the numerator is the same as the final digit of the denominator, as represented by the letter 'R'. The result of this division is represented by the two asterisks. Of this number nothing is known except that it consists of two digits, which may, or may not, be alike. However, if this value is cubed, and the digits of this cube exchanged for letters using the same substitution as in 'Dragon User', the result will be a familiar English word. Can you find the correct values of the letters and the word so produced?

For the competition this month, we require *just* the solution to this final question (No. 5).

The solution to question 1 follows, so if you wish to tackle it yourself, read no further. The solutions to questions 2 to 4 will be published next month.

1. The lowest and highest numbers are 139854276 and 923187456, the squares of

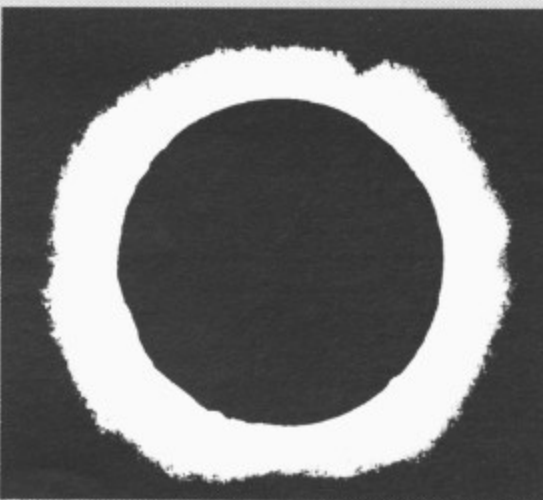
11826 and 30384 respectively. One method of solution is by running the program listed below. Here, the values in the range 11112 to 31426 are squared and the resulting figure is tested to determine if it is comprised of the nine digits, 1 to 9. In order to do this, the numerical variable needs to be converted into a string variable so that individual digits can be selected for examination. Note the second command in line 30: `S$=MID$(S$,2)` which removes the first character of the string. On the 'Dragon', as on some other micros, when a numeric variable is converted to its string equivalent, an extra 'invisible' character appears in the first position in the string. This character holds the imaginary plus sign in front of all positive numbers. (If the number were negative, the minus sign would appear here, as we would expect). Consequently, we need to remove this extra character from the string before examining its contents.

Having done this, the remaining nine digits need to be tested to determine that there is no zero present, and that no digit is duplicated. The test for duplication is not difficult as every character in the string can

be compared with every other, but it is time-consuming to test every one of the possible squares in this way. Fortunately there is a short cut available. In any arrangement of the digits 1 to 9, the sum of the digits must equal 45, and the product must equal 362880. Consequently, it is simply necessary to move along the string taking each digit in turn and finding the respective sum and product. Any value not in agreement with the expected values can be rejected. Note that this procedure will not guarantee that every number which passes the test does contain the nine digits, but it will reject all those which do not have sums of 45 and products of 362880. If the listed program is run it will print out all 30 squares which are made up of the digits 1 to 9, but it also includes a further two containing duplicated digits. However, these are easily spotted and can be eliminated. Note that the question, as stated, only asked for the lowest and highest values, so if it is run until the first answer is printed (the lowest value), and then line 10 is amended to: `10 FOR N=31426 TO 11112 STEP -1`, the program can be re-run to compute the highest value.

Prize

Guess what we've got this month? A real turn-up for the bookmakers. For those of you who reckoned your chance of getting a bug-free copy of *Total Eclipse* were (speed of light) to one against, Eclipse-Fenmar are backing their complete confidence in the



1.3 version by sending us here 20 copies for our August prizewinners. Our man on the spot raved about *Total Eclipse* ... fleets of Traders raved in frustration when the Universe locked up a thousand light years from home. Now it seems that the Universe is rolling again.

Rules

To solve this puzzle and win a prize, you must give the answer and show how you arrive at it, using a Basic program. Don't send cassettes, just a printout, and any explanation you want to offer (cat and four kids to support won't be accepted). Please mark your envelope AUGUST COMPETI-

TION, and don't forget to put your name and address on your entry and send it to reach us by mid-September at the latest.

This month's tiebreaker, complete the following phrase: "You're never alone in the Universe ..." It can be a limerick if you insist — just so long as it begins "You're never alone in the Universe ..."

May Winners

Our trusty trophy drawer this month contains 20 copies of Blaby's hit *Kung-Fu — The Master*, and these are on their way to J. B. Slinger of High Wycombe, Andy Beale of Wallington, Phil Sapiro of Liverpool, E. C. Hasted of Erith, D. C. Lee (not the Dee C. Lee) of Barnsley, J. L. Clark of Portsmouth, Ralph E. Newman of Penridge, S. P. Holt of Rosyth, P. D. Maddocks of Taplow, Simon Aubrey of Swindon, G. A. Hunt of Carnforth, G. R. Barber of Sutton Coldfield, E. A. Newman of Addlestone, M. W. Stonton of Towcester, Mark Heaps of Washington, P. A. Bennington of Strood, P. Fairbairn of Kilmaurs, M. C. Regnier of Fetcham, E. V. Jones of Cardiff and D. C. Faulkner of Pontypridd.

Solution

Many calculated correctly that 6 to the power of 36 is 10314424798490535546171949056 ... but not everyone remembered to say that the odds involved are *either* 1 in ... 056 *or* ... 055 to 1. Tiebreakers 'drew' heavily on unearched Dragons, but the Editor's favourite is 'I get a kick out of my Dragon, because it's-perfect for whatever ju do'. Ouch!

COMPUSENSE SUMMER SALE

DASM/DEMON Cartridge £14.95
EDIT + Cartridge £14.95

BARGAIN PACK for DRAGON DOS/CUMANA DOS

DASM/DEMON DYNAFAST/DYNAMISER/
DYNAXREF HIRES/EDIT+ all for £24.95

SPECIAL BARGAIN PACKS for DRAGON FLEX

FLEX/EDITOR/ASSEMBLER/DBASIC/
DYNACALC/RMS/SP-EDIT £129.00
DYNACALC/RMS/S-EDIT £75.00
FLEX UTILITIES/DEBUG/
DIAGNOSTICS £75.00

PROFESSIONAL BUSINESS SOFTWARE for OS-9

THE MOST COMPREHENSIVE PACKAGE AVAILABLE FOR THE DRAGON

As originally commissioned by DRAGON DATA

Volume 1: Invoicing/Stock Control
Volume 2: Sales Ledger/Purchase Ledger/Labeling
now dramatically reduced to only £29.95 each
or £54.95 for both

DRAGON HARDWARE

4-way expansion unit £125.00
EPROM programmer £75.00
RS232 — I/O module £49.50
Sideways ROM £39.00

Disk Drives for your DRAGON — check with us for the
best prices — free diskettes with every disk drive

5 1/4 in diskettes (bulk pack) 10 for £10.00
50 for £45.00 100 for £85.00

CHAT COMBO — the complete modem package for
DRAGON FLEX/DRAGON 64, CHATPLUS2
+ CHAT/Viewdata + XMODEM. £45.00

Modems: DEMON (not BT approved) £69.95
WS2000 (BT approved) £125.00

DEMON Modem with cable and CHAT COMBO £99.95
WS2000 modem with cable and CHAT COMBO £159.95

DRAGONPLUS — the Ultimate Expansion for your
DRAGON — 80 by 24 video — extra 64k memory £103.50
EDIT+ for DRAGON DOS now includes software
for DRAGONPLUS

FLEX update disk £5.57 OS-9 Drivers £5.75

Prices include VAT

PLEASE ADD £2.00 to all orders for
Postage and Packing
VISA/ACCESS/MASTERCARD
credit cards accepted

Stocks of some items are limited —
order now to avoid disappointment



COMPUSENSE Ltd

PO Box 169, Palmers Green
London N13 5XA



Fast mail order service
Telephone orders on 01-882 0681/6936

PEAKSOFT DRAGON SUPPLY CENTRE

CHEETAH 125 AUTOFIRE JOYSTICK with DRAGONISER £14.95.
FOUR (!!) fire buttons plus autofire! We've chosen the Cheetah as one of the
best value-for-money arcade joysticks available. DRAGONISER only
(supply your own joystick) £11.95. Unlike many conversions, our unique
Peaksoft Dragoniser does NOT invalidate the joystick manufacturer's
guarantee.

PRO-STICKS £9.95 pair, £5.50 each. Genuine twin potentiometer floating
joysticks, suitable for all purposes. We send these all over the world!

*****NEW***** Single-sided double density DISK DRIVE UNITS as
supplied to Dragon Data, without cases or power supplies. Just "disco-
vered" in store by us! Supplied untested at £39.95!!!!!! Special order form
needed — please send self-addressed envelope.

PRISM MODEM

Enables you to join the fun on Radio Dragon (now on the air 30 hours a
week!) Micronet, Prestel, and 1200/75 bulletin boards!

There are now FOUR HUNDRED THOUSAND pages to explore on
Micronet and Prestel alone, offering inter-active games, nationwide "chat"
lines, advice on computer problems, tele-shopping, a micro market,
electronic bank accounts, your own free mailbox... the list just goes on and
on.

The Prism Modem uses your phone line to link your Dragon 32 or 64 to
mainframe computers throughout the country — the special cheap call rate
costs just 40p an hour.

OUR BREAKTHROUGH PRICE IS JUST £64.95 complete with all leads
and "plug-in-and-go" cartridge software, and including a FREE 3-month
subscription to Micronet and a FREE copy of the Dragon User's
Communications Directory.

ONE DAY EVERY HOME WILL HAVE ONE — WE'RE OFFERING YOU
THE FUTURE!

× × × × ×

PEAKSOFT BRAND NEW HEAVY DUTY POWER SUPPLIES £14.95
complete. Compare this with the price of "reconditioned" units!

DRAGON DATA DISK DRIVE COPPER-BOUND TRANSFORMERS
£14.95. We tracked down the last in the country and bought the lot!
Safeguard the future use of your disk drive while stocks last!

*****NEW***** DRAGON SWEAT SHIRTS (RRP £7.50) Our price
£4.99!!! T-SHIRTS (RRP £3.50) Our price £2.49!!! Please state S, M, L or XL
size. HALF-PRICE SPECIAL OFFER — For EACH £10 spent on other
goods, order ONE sweat shirt for £2.49 or ONE T-shirt for £1.24!!! HOW DO
WE DO IT?

*****NEW***** Briefcase-style padded case for Dragon and power supply
£9.95!

*****NEW***** Dragon keyboards £14.95 *****NEW*****

*****NEW***** I LOVE MY DRAGON car sticker 99p *****NEW*****

LEADS: cassette £2.50, aerial £2.50, printer £11.95. Heavy duty DUST
COVERS with Dragon logo £3.95.

Dragon-compatible Omega DATA RECORDER £24.95.

PRINTERS from £194.95 (Tatung TP100) — or our new SUPER DEAL
saves £50 on Panasonic's terrific Near Letter Quality P1080, complete with
a 1K buffer — now £219. Lead £5 when purchased with printer.

Fidelity colour MONITOR (it's RGB AND Composite, so you won't need to
buy a new one if you swap computers!) £199.95 — optional 4-year tube
guarantee.

Ask for our complete DISC DRIVE prices!

Plus... Dragon User back numbers at £1 each and thousands of the best
Dragon books at crazy prices! (Please phone or send sae for details.) For
fact sheet on Prism Modem, printers, monitor, or our information sheet
"Choosing a Joystick", please send sae.

To order: Just note your name, address, computer and goods required on
the back of your cheque or postal order. Access/Visa card-holders may
phone their order to 0636 705230 at any time, day or night. All goods are
POST FREE.

We supply by return of post, subject to availability. Personal callers welcome
— please phone first so that we can have your order ready. CASH ON
DELIVERY on all orders over £40 — please send at least £5 deposit and pay
the balance to the postman (sums over £50 must be paid at your local Post
Office.) Free credit to personal callers by post-dated cheques.



PEAKSOFT

48 QUEEN STREET, BALDERTON
NEWARK, NOTTS NG24 3NS

Tel: 0636 705230

MAKING YOU GLAD YOU BOUGHT A DRAGON!



JOHN PENN DISCOUNT SOFTWARE FOR THE DRAGON

EDUCATIONAL CORNER

Dragon Education Software series

£2.00 each or any three for £5.00 or any five for £8.00
 LET'S COUNT (3-7) simple counting
 SHAPE UP (4-7) simple shapes
 NUMBER CHASER (4-11) estimation skills
 FACEMAKER (4-11)
 CRANKY (7-11) number patterns and relationships

Shards Software series

Shards/Cambrian software £1.50 each or any three for £3.00
 FUN TO LEARN (6-12)
 LIVE AND LEARN (8+)
 FAMILY PROGRAMS
 QUIZ PACK
 MONSTER MATHS (6-14)
 INFANT PACK (pre-school)
 FUN AND GAMES
 SNOW QUEEN (7+) Cambrian Software
 (pattern recognition and spelling)

Dragon Data series

£2.00 each or both for £3.50
 NUMBER PUZZLER (4-11)
 CIRCUS ADVENTURE (4-8)

Cheshire Cat (Ampalsoft) series

£3.50 each or two for £6.00
 MATHS I (4-6)
 MATHS II (5-7)
 'O' LEVEL MATHS I and II
 SUPERSPY (11+)
 BASIC TUTOR — BEGINNER'S LEVEL
 BASIC TUTOR — ADVANCED LEVEL

BARGAIN BASEMENT

£1.50 each; five for £6.00; ten for £10.00
 Please give at least two alternatives when ordering five or more programs

DRAGON TREK (W/s)	DEMON KNIGHT
SURPRISE	DEATH CRUISE
MINIGAMES	U.X.B.
ALIEN ODYSSEY	TRANSYLVANIAN TOWER
AMAZING	MOVIE PRODUCER
INTERPLANETARY TRADER	LEGGITT
GOLDEN APPLES OF THE SUN	PEDRO
BOPSWIZZLE	OSSIE
HOMEBASE	PETTIGREW'S DIARY
B.C.BILL	OPERATION SAFRAS
DETECTIVE	CHAMPIONS
CELLS & SERPENTS	PICTURE PUZZLES
CITY DEFENSE	MISSION I — PROJECT VOLCANO
SUPERSPY	DRAG RUNNER
MYSTERY OF THE JAVASTAR	NIGHT FLIGHT
EMPIRE	GRID RUNNER
GOLF	MINED OUT
LIONHEART	DON'T PANIC

GAMES

Title	Publisher	Our Price
CHOCOLATE FACTORY	Minnits	£2.50
HARERAISER PRELUDE double pack	Haresoft	£5.00
HARERAISER FINALE (Adv)		
COSMIC CRUISER (Arc)	Imagine	£2.00
ARCADIA	Imagine	£2.00
FRANKLIN'S TOMB (Adv)	Salamander	£2.00
LOST IN SPACE	Salamander	£2.00
FISHY BUSINESS	Salamander	£2.00
CAVE FIGHTER (Arc)	Cable	£2.00
PACDROIDS (Arc)	Program Factory	£2.00
STOCKMARKET	Bamby	£2.00
STARMAN JONES	Blaby	£2.00
SUNKEN CITY (Adv)	Slik	£4.00
BLOCKBUSTER QUIZ	Computerware	£4.50
LINKWORD	Computerware	£4.50
SHOW JUMP	Computerware	£5.50
ACE HIGH	Tudor Williams	£5.50
TIME ATTACK (Adv)	Tudor Williams	£5.50
CLIFF HOUSE (Adv)	Thrillsoft	£3.00
BLACK TOWER (Adv)	Thrillsoft	£3.00
or both Thrillsoft programs for £5.00		
BEST OF P.C.W. (25 programs and 206	Centurion	£5.95
page booklet of listings etc.)		
PREDICTOR (forecast racing & football results)	Benley	£4.00
MANSION OF DOOM (Adv)	Dragon Data	£2.00
STALAG-ENO (Adv)	Dragon Data	£2.00
BEAN STALKER	Microvision	£7.95
THE TALISMAN	Microvision	£7.95
EDDY STEADY GO (Arc)	Incentive	£6.75
DARK STAR	Design Design	£6.00
TIM LOVES CRICKET (Tandy version	Peaksoft	£4.00
also available)		
SAS	Peaksoft	£2.00
PHOTO-FINISH	Peaksoft	£2.00

BACK TRACK (Arc)	Incentive	£3.50
JET SET WILLY (Arc)	Software Projects	£6.35
MANIC MINER (Arc)	Software Projects	£3.50
FOOTBALL MANAGER	Addictive	£5.95
CHESS	Oasis	£2.50
BACKGAMMON	Oasis	£2.50
OTHELLO	Oasis	£2.50
INVADER CUBE	Oasis	£2.50
DOMINOES	Oasis	£2.50

UTILITIES

Title	Medium	Publisher	Our Price
Moneybox	disk	Harris	£13.50
Sharebox	disk	Harris	£15.50
Mailbox	disk	Harris	£15.50
Salesbox	disk	Harris	£18.50
Billsbox	disk	Harris	£18.50
Cashbox	disk	Harris	£18.50
Ordersbox	disk	Harris	£15.50
Stockbox	disk	Harris	£18.50
(please state whether DragonDos or CumanaDos for all Harris software)			
Mailer/Address Book	cass.	MST	£3.00
Stock Control	cass.	MST	£3.00
Mailer/Address Book	disk	MST	£4.00
Stock Control	disk	MST	£4.00
Invoices/Statements	disk	MST	£4.00
MST Exec.	disk	MST Prof. Range	£10.00
Stock Control	disk	MST Prof. Range	£10.00
Petite Pascal	cass.	Oasis	£5.50
Shaper (sound effects)	cass.	Shards	£5.00
Disk-It	disk	Pamcomms	£10.00
Res-Text (hi-res utility to give a 32x24 screen with 255 redefinable characters)	cass.	Starship	£4.00
Personal Banking System	cass.	Hilton	£9.95
(upgrade pos. to DragonDos)			
Utilities I	cass.	Hilton	£5.00
Disassembler	cass.	Hilton	£5.00
OS9 Software for use with Dragon 64, OS9 Operating System and disk drive(s).			
Dynacalc (electronic spread sheet)			£21.00
Record Management System			£20.00
Basic O9 (a structured interactive compiled language)			£21.00
Editor/Assembler/Debugger (LIMITED NUMBER)			£19.00
'C' Compiler (a system implementation language)			£27.00
Pascal (a structured modular language)			£19.00
Stock Recording System			£19.00
The Cash Book & VAT Register System			£19.00

10% discount on OS9 prices if 3-4 programs purchased
 20% discount if 5 or more programs purchased.
 OS9 Manuals (for R.M.S., Pascal, Stock Recording, Basic O9 and Cash & VAT only)
 £2.50 each

PERIPHERALS

CUMANA DISC DRIVES	RRP	Our Price
1x40 track single sided	£149.95	£133.16
1x80 track double sided	£179.95	£167.30
2x40 track single sided	£269.95	£248.25
2x80 track double sided	£339.95	£309.96
Interface	£75.50	£71.16

Our price includes VAT and carriage (on Cumana products only)

SAMCHIPS (74LS 783) £15.00 each
 JOYSTICKS £3.00 each or £5.00 per pair

We also sell other computers such as the Amstrad PCW 8256 and 8512, and the Commodore C128D, as well as software for the C16, Plus 4, Vic 20 and Commodore 64 computers. Please send or phone for the appropriate price list.

HOW TO ORDER

Write to us quoting the title, publisher (and medium where relevant) of the programs or items you want. Please include 50 pence for postage/packaging on single items, and 75 pence for two or more titles/items ordered. Postage to rest of Europe is £1.50, and £3.00 to rest of world.

If possible please give your telephone number as well as your name and full address. Cheques/postal orders/Access made payable to John Penn Discount Software.

All the software is subject to availability. Please allow up to 21 days for delivery, though we do try to despatch orders within 24 hours.

Trade enquiries welcomed.

**J. PENN
DISCOUNT SOFTWARE**
 Dean Farm Cottage,
 Kingsley, Bordon, Hants GU35 9NG
 Tel: Bordon (04203) 5970