

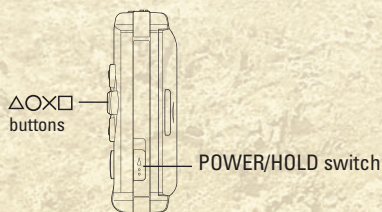
UNTOLD LEGENDS THE WARRIOR'S CODE

Table of Contents

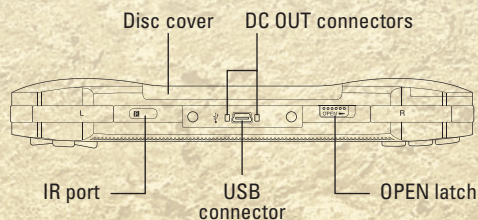
Controls.....	4
Introduction.....	6
Quick Start.....	6
Creating Your Character.....	8
Game Screen and User Interface.....	12
Character Information Screens.....	14
Playing the Game.....	17
Multiplayer Games.....	23
Credits.....	26
End User Agreement and Software License.....	29

Getting Started

Right side view



Front view



Set up your PSP™ (PlayStation®Portable) system according to the instructions in the manual supplied with the system. Turn the system on. The power indicator lights up in green and the home menu is displayed. Press the OPEN latch to open the disc cover. INSERT *Untold Legends™ The Warrior's Code™* disc with the label facing away from the system, slide until fully inserted and close the disc cover. From the PSP™ system's home menu, select the Game icon and then the UMD icon. A thumbnail for the software is displayed. Select the thumbnail and press the **⊗** button of the PSP™ to start the software. Follow the on-screen instructions and refer to this manual for information on using the software.

NOTICE: Do not eject a UMD™ while it is playing.

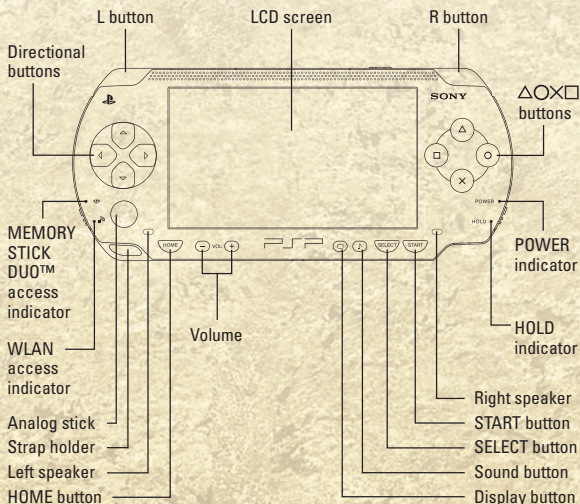
Memory Stick Duo™

Warning! Keep Memory Stick Duo media out of reach of small children, as the media could be swallowed by accident.

To save game settings and progress, insert a Memory Stick Duo into the memory stick slot of your PSP. You can load saved game data from the same memory stick or any Memory Stick Duo containing previously saved games.

Starting Up

PSP™ (PlayStation®Portable) system configuration



Controls

Menus

Menu Navigation
Select Menu Item
Back / Cancel

Directional buttons
⊗
⊙

Game Controls

Move
Attack
Charged Attack
Context Action
Attack of Opportunity
Use Special Ability 1
Use Special Ability 2
Use Special Ability 3
Use Special Ability 4
Use Special Ability 5
Use Special Ability 6
Use Health Potion
Use Power Potion
Block
Switch Weapons
Transform
Quick Chat
Orbit / Zoom Camera
Mini-Map Toggle
Pause Game / Options Menu
Information Screens

Analog stick
⊗
⊗ (hold)
⊞ (hold)
⊞ (hold)
⊙
⊕
Left button
Right button
Up button
Down button
R
L (hold) + R
L (hold) + ⊗
L (hold) + ⊙
L (hold) + ⊕ (hold)
L (hold) + ⊞
L (hold) + Directional buttons
L (hold) + SELECT
START (Single player only)
SELECT

Information Screens

Cycle Screens Right
Cycle Screens Left
Screen Navigation
Exit to Game
Rotate / Zoom Paper Doll

R
L
Directional buttons
⊙ or SELECT
Analog stick

Inventory Screens: Weapons - Armor - Trinkets

Equip / Un-Equip / Combine ⊗
Drop Item ⊕
Toggle Info ⊞ (hold)

Using the Inventory Screen

1. Press **SELECT** to enter the Information Screens
2. Press **R** to cycle right through the Information Screens
3. Press **L** to cycle left through the Information Screens
4. Press up, down, left and right to navigate the inventory
5. Press ⊗ to Equip / Un-Equip / Combine
6. Press ⊕ to Drop Item
7. Press ⊞ to Toggle Info

Character Screens: Stats - Specials - Perks

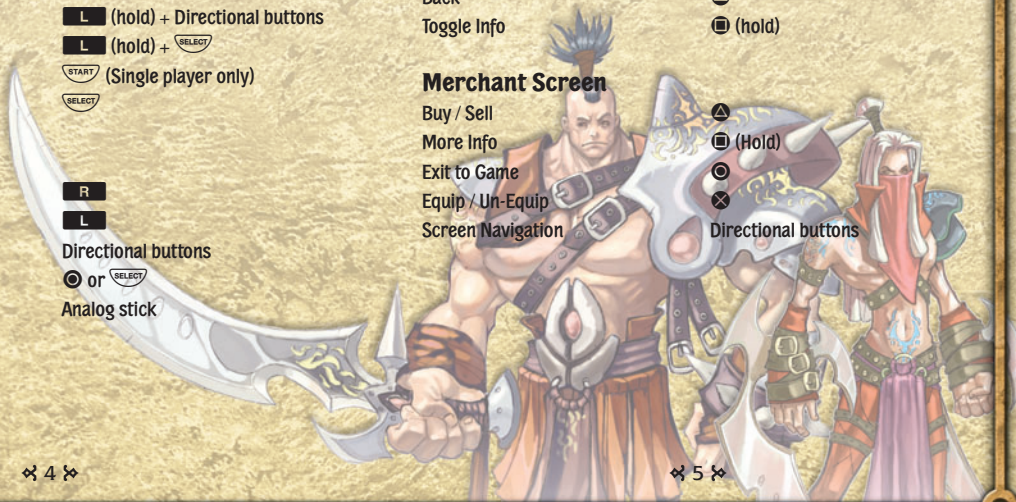
Level Up / Apply Points
to Special Ability ⊗
Assign Special Button ⊕
Accept Applied Points ⊗
Toggle Info ⊞ (hold)

Journal Screens: Quest - Map - Bestiary

Select / Use / Teleport / View ⊗
Back ⊕
Toggle Info ⊞ (hold)

Merchant Screen

Buy / Sell ⊕
More Info ⊞ (Hold)
Exit to Game ⊙
Equip / Un-Equip ⊗
Screen Navigation
Directional buttons



Introduction

Eighteen years have passed since a powerful and bloodthirsty warlord invaded the peaceful city of Koryn Thal. Today, the realm is one of chaos and oppression as the warlord-turned-emperor's strange and horrific minions continue to slaughter and enslave its people.

When members of a secret shapeshifter race, known as changelings, suddenly begin to disappear from the city streets, suspicions of an insidious plot to exterminate this ancient people lead many of its members to flee the city walls for survival. While struggling to evade capture and death in the war-ravaged kingdom, a small band of changeling refugees stumble upon a carefully guarded secret that rekindles the hope that freedom and peace can be restored to the realm.

Can these refugees-turned-heroes safeguard the only key to their survival or will it fall into the emperor's hand, dooming their race to extinction and their human cousins to endless oppression and strife?

Quick Start

Start the game

Press the up or down buttons to select "New Game"; press **X** to confirm selection.



Choose class

Press the up or down buttons to cycle through the five classes. Press **X** to select your class.



Enter name

Use the directional buttons to highlight characters and press **X** to enter them. To delete, press **△**. You can shift between capital and lower case with **□**. Press **R** to enter a space or highlight "Space" and press **X**. Highlight "Accept" and press **X**.



Customize skin tone

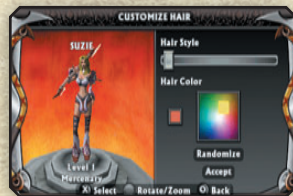
Press the up button to highlight the current color. Press **X**; move the selector to your color palette choice and press **X** to select it. Alternately, select "Randomize" and press **X** for a random color pick.



Highlight "Accept" and press **X**.

Customize hairstyle and color

Press the up button to highlight the hairstyle slider. Press the left or right buttons to move the slider and change hairstyles. Press the down button to select the hair color palette. Press **X**; move the selector to your color choice and press **X** to select it. Alternatively, select "Randomize" and press **X** for a random color and style pick.



Highlight "Accept" and press **X**.

Assign attributes

Press the up and down buttons to select an attribute. Press the left or right buttons to assign points to an attribute.



Highlight "Accept" and press **X**.

Select game type

Select "Single Player Game" using the up or down buttons; press **X** to confirm selection.



Move your character

Use the analog stick to move your character.

Get clues

Move character onto question mark symbol and press **□** to receive clue. Press **□** to progress through clue dialog.

Attack enemies

Approach enemy and press **X** to attack. Hold **X** to execute a charged attack.

Open chests, pick up loot

Move close to chest and press **□** to open it.

Pick up loot

Move over treasure that appears and press **□** to pick it up.



Open doors

Move in front of a door and press **□** to open it.

Creating Your Character

In *Untold Legends™ The Warrior's Code™* you have the opportunity to adventure as one of five character classes, each tailored to slightly different styles of play. Each character also has an exclusive set of special abilities that can be developed in different ways. In addition, each character has a unique changeling form into which he or she can transform.

Choosing Your Character Classes

Use the directional buttons to select the character you would like to play and press **X** to accept. Press **○** to return to the Main Menu.

Your gameplay experience will vary depending on which character you choose to play and how you develop its special abilities, so we encourage you to experiment and try several different characters.

Guardian

This one-time soldier has been a part of the changeling underground movement since the fall of the capital city. After eighteen years, his chance to return to the fields of battle has finally arrived.

A true champion of his people and the city for which he fights, the Guardian faces his enemies with sword and shield.

Changeling form: Beast



Mercenary

This tough-as-nails warrior has an ego that's as sharp and as deadly as her gruesome blade. Armed with a dual-sided poleaxe and a wicked saw-blade launcher, this Amazon-like warrior mows down her enemies with sanguinary satisfaction.

Changeling form: Fury



Disciple

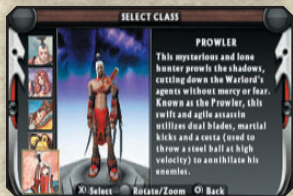
Normally opposed to the taking of life, the patient and wise Disciple has been forced to take up arms in defense of his people. Wielding the ancient mysticism of his changeling ancestors (and a shotgun for good measure), the Disciple joins the fight against all those who threaten his people's very existence.

Changeling form: Behemoth



Prowler

This mysterious and lone hunter prowls the shadows, cutting down the Warlord's agents without mercy or fear. Known as the Prowler, this swift and agile assassin utilizes dual blades, martial kicks and a cesta (used to throw a steel ball at high velocity to annihilate his enemies).



Changeling form: Dervish

Scout

Vivacious, cunning and wily, the Scout is a versatile and lithe combatant who utilizes her small stature to outmaneuver enemies. Favoring twin daggers and a large repeating crossbow, the Scout poses a very real threat to those who might underestimate this youthful combatant's prowess and determination.



Changeling form: Hellcat

Naming Your Character

Be sure you choose an appropriate name for your character. This is the name that will be displayed for you in multiplayer games as well as on the *Untold Legends™ The Warrior's Code™* online leaderboards.

Customizing Your Look

There are several options to create a unique look for your character. As you play the game, you will also find powerful weapons and armor to further customize your appearance.

Skin Tone, Hairstyle, Hair Color

Each character can choose among different hairstyles and colors. Choose your options using the directional buttons. Press **X** to make a selection. When you are satisfied with your choices, select "Accept" and press **X** to move to the next option.



Press **O** at any time to go back through your options.

Assigning Attribute Points

Attribute points help to determine your character's base abilities. Each character class has slightly different starting attributes to represent the unique strengths and weaknesses of that class. In addition, you start the game with 10 bonus attribute points that you can spend to customize your character.

	Strength	Intelligence	Dexterity	Stamina
Mercenary	√	√		
Scout		√	√	
Disciple		√		√
Prowler	√		√	
Guardian	√			√

Allocate your bonus points using the directional buttons. Select "Accept" and press **X** when you are satisfied with your distribution. Press **O** to go back to the appearance options.

The following is a list of attributes and how they affect gameplay:

Strength

- Increases the amount of damage delivered in melee attacks
- Increases the chance of scoring a critical strike when using ranged weapons
- Increases the amount of weight your character can carry

Dexterity

- Increases the amount of damage delivered with ranged attacks
- Increases the chance of scoring a critical strike when using special abilities
- Increases your character's ability to break through an enemy's block

Intelligence

- Increases your character's total amount of power
- Increases the chance of scoring a critical strike with melee weapons
- Increases the chance of finding unique items

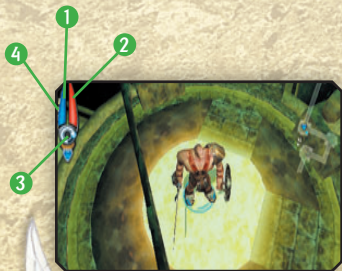
Stamina

- Increases your character's total amount of health
- Increases the chance of scoring a critical block
- Increases the duration of your character's changeling form

Game Screen and User Interface

Resource Meters

1. Power bar (blue)
2. Health bar (red)
3. Essence meter (white)
4. Experience bar (yellow)



Health

Health represents how much punishment your character can absorb from enemies before dying. When enemies hit your character, he or she will lose health. If the health bar runs out, your character will die. As you advance through the game, your character will gain more health.

Health regenerates over time. Health potions and certain special abilities can dramatically increase this regeneration rate.

Power

Power is the energy your character spends to use special abilities. Different special abilities consume different amounts of power. If your character does not have enough power available for a special ability, that ability cannot be used. As you advance through the game, your character will gain more power.

Power regenerates over time. Power potions and certain special abilities can dramatically increase this regeneration rate.

Essence

Essence allows you to transform into a beast of considerable power for a short period of time. As you defeat enemies, a white ball of light will appear and be absorbed by your character. This will add to the essence meter, as long as it is not already full.

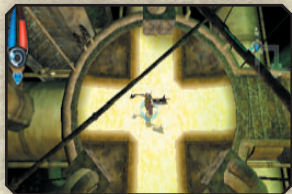
When the essence meter is full your character will be able to transform (hold **L** and **△**). After the transformation ends, the essence meter will be depleted and must be filled once more to allow you to transform again.

Experience

Experience shows the progress your character has made toward earning the next level. As your character defeats enemies and solves quests the experience bar will fill. When it is completely full and resets, your character will earn a level. You may then train up or learn new special abilities.

Mini-Map

Hold **L** and press **SELECT** to toggle the mini-map. The map can appear small in the upper right corner of your screen, larger in the center of your screen, or can be turned off. Your character is represented on the mini-map by a colored triangle.



Multiplayer note: The colored triangle on the mini-map corresponds to the color of the ring around your character's feet. In multiplayer games, you will be able to keep track of your friends' locations using the colored arrows on the mini-map.

Character Information Screens

Your character's vital statistics and abilities are displayed in the character information screens. To view these, press **SELECT**. There are three main sections, and three subsections within each of these. Press **L** or **R** to move through the sections.

Inventory

Your character's inventory covers weapons and armor equipped and carried, as well as miscellaneous carried items such as potions.

Equipment that appears red in your inventory cannot be used or equipped. Equipment that appears yellow requires a higher player level to be used or equipped.

Weapons

There are three types of weaponry you can carry: melee weapons, ranged weapons and ammo. To use melee or ranged weapons you must equip the weapon of your choice. Highlight the weapon you wish to equip using the directional buttons. Press **X** to equip or unequip an item. A green letter "E" will appear in the lower right corner of the weapon icon to indicate that it is currently equipped.



Ammo is automatically drawn from your inventory when you use your equipped ranged weapon.

Armor

There are five armor types kept in your inventory: head armor, body armor, hand armor, foot armor and shields. To wear armor, you must equip it. Highlight the armor you wish to equip using the directional buttons. Press **X** to equip or unequip an item.



Note: Only Guardians and Disciples may equip shields.

Trinkets

There are five types of trinkets you can find: potions, earrings, necklaces, rings and gems. These are found on the Trinkets screen of your character's inventory. Earrings, necklaces and rings may be equipped like armor and weapons (press **X** to equip an item).



Character

The character screens display information on your character's attributes, combat skill, resistances, health, power, special abilities and transformation bonuses.

Stats

The Stats page displays all the vital information about your character, from attributes to resistances. From this page you can level up your attributes, such as strength and intelligence, by highlighting an attribute using the directional buttons and pressing **X**.



Your character's resistances represent his or her ability to negate damage taken from certain kinds of attacks, such as poison or cold.

Specials

The Specials page shows special abilities your character can learn to level up. These abilities have a wide variety of effects. When you level up you may spend available points on these abilities by pressing **X**. You may acquire a new special ability by putting a point in it. Abilities you have already bought may be improved by adding more points to them as you level up.



Special abilities are assigned buttons to use them. You may change these assignments by highlighting a special ability and pressing **A**. Then, press the button you wish to use to activate that special ability.

Perks

Transformation

Being a changeling, your character is able to transform into a creature of considerable power for short periods of time. The creature your character transforms into is shown at the bottom right. As you level, your changeling form will automatically grow in strength.



Runes

You may discover runes as you play. These may be used to enhance your character by equipping them (highlight the rune and press **X**). Each rune is inscribed with a "trait" that is granted to your character when the rune is equipped. You can have up to two runes equipped at a single time. You may not remove a rune after equipping it, instead when you equip a new rune, the rune it replaces is destroyed.

Journal

Quest

Quests and goals you have completed or are currently working on will be kept in your journal. You can find out what your current mission's goal is by entering the task list by pressing **X** and then using **B** to gain more information on individual tasks and quests.

Map

This shows the map of the current chapter. To get additional information about a location you have visited, select the location and press **B**. You can also quickly travel to a location you have already discovered by highlighting the location and pressing **X**.

Bestiary

Your journal will track the enemies you have encountered in the Bestiary. To find out information about an enemy you have encountered highlight the enemy and press **B**.

Playing the Game

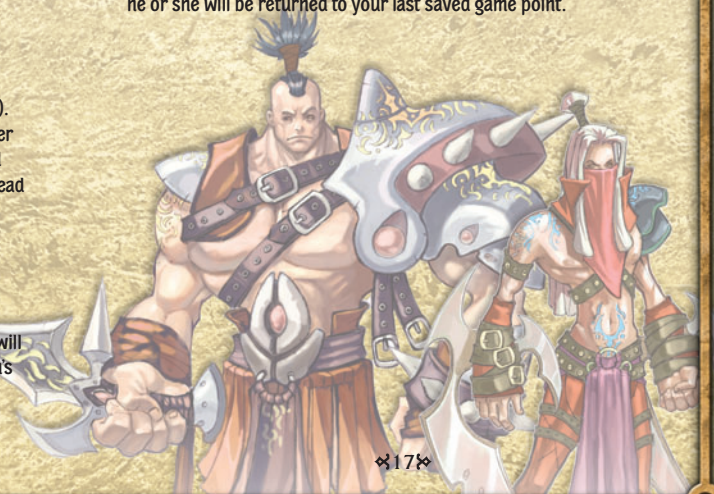
Untold Legends™ The Warrior's Code™ is an exciting, fast-paced, fantasy game of combat and questing. As your character explores the world, he or she will encounter many dangerous enemies and friends needing help while working to unravel mysteries.

Main Menu: Pausing and Saving Games

You may pause the game at any time and access the Main Menu by pressing **START**. Use the directional buttons to select a menu option and press **X**. Pressing **○** from the Pause Menu will return you to the game.

Save Game

This option lets you save your progress. If your character dies, he or she will be returned to your last saved game point.



Exit

Returns you to the game.

Combat

There are two ways to attack an enemy: up close with melee and at range. To switch between melee and ranged attacks, hold **L** and press **○**.

Melee

Engaging an enemy in melee is as easy as moving your character in close and pressing **×**. Your character will take swings with his or her melee weapon if it is equipped and readied (hold **L** and press **○** to switch between your readied melee and ranged weapons).

Ranged

To attack with a ranged weapon, use the analog stick to aim your character at an enemy, then press **×**.

Blocking

Hold **L** and press **×** to block. Blocking will lessen the damage your character suffers from enemy attacks. While blocking, your character is still vulnerable to attacks from behind. Be aware that monsters can block too!

Note: Blocking is only effective against normal attacks. Special attacks from enemies may not be mitigated by blocking.

Special Abilities

Each class has special abilities that enable more advanced strategies to defeat enemies. **△**, **○** and directional buttons are assigned to abilities from your Special Ability character information page.

Press **△** or **○** to use your assigned special abilities. Note that special abilities have a wide array of effects so be sure to read how they are used by going to your Special Abilities character information page, highlighting an ability, and pressing **□** for details.

Health and Power Potions

Health and power potions will quickly regenerate your character's health and power. Larger potions restore more health and power than smaller potions and will be more useful as your character's health and power pools become larger with advancement. You need to manage your character's supply of potions effectively if you are going to succeed in your quest.

To use a health potion, press **R**. To use a power potion, hold **L** and press **R**.

Charged Attacks

Your character can execute a special move in combat called a charged attack. Press and hold **×**. A meter will appear and build up to full. Release the button to execute the charged attack.

Attacks of Opportunity

Some enemies will become vulnerable before or after strong attacks or certain special ability attacks. You will know an enemy has become vulnerable by the red circular display that will appear beneath it. This gives you an opening to perform an attack of opportunity.

To execute an attack of opportunity, approach the vulnerable enemy and press **□** for special effects:

- Quickly press **□** for an Essence Strike
- Hold **□** for a Clear Recovery
- Hold **□** longer for a Loot Quake



Dying

When your character's health reaches zero, he or she will die. Your character will be revived at the last checkpoint reached within the level, your last save location within the level or the entrance of the map as appropriate. All progress made since that point, including monsters killed, experience earned and loot found, will be lost.

Co-op Multiplayer Note: If a character dies during a co-op multiplayer game, he or she can be revived if the survivor goes to any checkpoint or exit. If both characters in a co-op multiplayer game are killed, they will be revived at the host's last checkpointed location or the entrance of the map in which they died.

Objects and Non-Player Characters

The world is full of objects and individuals with which you may interact. To talk to NPCs, open chests, doors, and perform other interactions, press **□** when near the object or NPC.

Talking to Non-Player Characters

Talking to other characters you meet on your journeys will be vital to your success. To talk to an NPC, approach the NPC and press **[E]**. To advance the conversation, press **[E]** again.

Opening Chests

Great treasures are found in chests, so be sure to open every chest you come across. To open a chest, approach it and press **[E]**.

Breaking Boxes

Some objects your character encounters may be broken, such as boxes that can reveal hidden treasure, or walls that can reveal hidden passages. Press **[X]** to attack the object as you would an enemy.

Special Equipment and Items

Runes

You may discover runes during your adventures. These are inscribed with "traits" that you can equip to add additional bonuses to your character. You can equip them on your Bonus screen.



You can only have two runes equipped at a time. When you equip a new rune, the rune you are replacing will be destroyed.

Gems

In your adventures you will discover special Gems. Gems are used to enhance your weapons, armor and shields by adding special magical effects to them.

To add a Gem to a piece of equipment:

1. Press **[SELECT]** and navigate to the Trinkets Inventory screen.
2. Select a Gem from your inventory using the directional buttons.
3. Press **[X]** to use the Gem.
4. Use **[L]** or **[R]** to navigate to the screen with the item you want to enhance.
5. Select the weapon, armor or shield you wish to enhance using the directional buttons.
6. Press **[X]** to apply the Gem.

Quests and the Quest Journal

There are a wide variety of quests you can perform in the game, including slaying monsters, saving hostages and recovering ancient artifacts. As you complete quests, your quest journal will update with information and hints on how to proceed.



The quest journal will help you track your progress through a quest and direct you to your next goal. If you're not sure what to do next, your quest journal can point you in the right direction.

Leveling Up

When your character's experience bar (located on the left side of the power bar) fills completely and resets, you will be able to level up attributes and abilities. Use earned points to distribute as you see fit. Leveling up will also grant your character more health and power.



After you receive a level up message, press **[SELECT]** and navigate to your character information screens using **[L]** or **[R]**.

Leveling Up Attributes

You can improve your character's four main attributes when you level up. From the Stats character info page, highlight the attribute you wish to level up: Strength, Stamina, Intelligence or Dexterity. Press **[X]** and use the right button to add earned points to the attribute. You may deduct points you just added to the attribute by pressing the left button if you have not yet accepted the addition of points. You cannot deduct points out of your current base attribute score. When you are satisfied, press **[X]** to accept.

You may have multiple points to use for improving attributes when you level up, and you may spread them out among your attributes as you like.

You do not have to spend all your points. You may save them for use later.

Leveling Up Special Abilities

On the Specials character info screen, use the directional buttons to highlight a special ability you would like to improve. Press **X** and press the right button to apply available points to the special ability. The more points a special ability has in it, the more powerful it is. You may deduct points you just added to the special ability by pressing the left button if you have not yet accepted the addition of points. You cannot deduct points out of your current base special ability score. When you are satisfied, press **X** to accept.

You may apply level up points to special abilities you currently have, or you may use them to acquire new special abilities you have not yet spent points on.

Transforming

As you defeat enemies, your character will absorb essence. This is tracked by the white ring on your resource meter, below health and power. When the ring is full, your character will no longer absorb essence and will be able to execute a transformation. This will turn your character into its changeling form. Your character can only maintain this form for a limited amount of time, but during this time he or she is very powerful with stronger attacks and defenses.



To transform, press and hold both **L** and **A**.

Buying and Selling Items

There are several merchants in the game who anxiously await your business. To initiate a transaction with a merchant, approach the merchant and press **□**.

Buying Items

Browse through the merchant's inventory and use the directional buttons to select an item you would like to purchase. To purchase the selected item, press **A**. The sale price will be deducted automatically from your character's money supply.

Selling Items

Selling items you have found that your character cannot use or no longer desires is the best way to acquire money. Use **R**, **L** and the directional pad to search your inventory for the item you wish to sell. Note the purchase price the merchant is willing to pay. To sell the selected item, press **A**. The purchase price will be added automatically to your character's money supply.

Multiplayer Games

Untold Legends™ The Warrior's Code™ is even more fun with your friends!

Connection Types

Multiplayer Adhoc

This connection is for players who are all within close proximity of each other, such as in the same room. In this type of game, the players' PSP systems talk directly to each other, and no additional hardware is required. This is a great way for you and your buddy to adventure together.

Multiplayer Infrastructure

This connection is for players who have access to a wireless Internet hot spot. With this connection, players from all over the world can connect their PSP systems and adventure together, as well as compete against one another for position on the *Untold Legends™ The Warrior's Code™* online leaderboards at: <http://untoldlegends.station.sony.com/thewarriorscode>.

Note: Player responsible for Wi-Fi Fees.

Multiplayer LAN

This connection is for players who have access to a local wireless network. The wireless network acts as a bridge connecting the local PSP systems.

Game Types

Co-Op Campaign (2-Players)

Play through the campaign with a friend.

Player vs. Player (2-4 Players)

Frenzy	Player with the most kills wins.
Gold Rush	Player with the most gold wins.
Survive!	Last player alive is the winner.
Hunter	First player to hit the kill limit wins.
Robber	First player to hit the loot limit wins.
Miser	The player who holds onto the treasure longest wins.
Capture the Flag	Capture your enemy's flag and bring it back to your base to win.

Team Variations (4 Players)

All team games are 2-on-2.

Starting a Multiplayer Game

1. Select "New Game" or "Load Game" from the Title Menu and press **X**.
2. After loading or creating a character as normal, you will be presented with the Main Lobby screen. From here you can create a new game, join an existing game and chat with other players in the lobby.
3. Choose one of the multiplayer game options and press **X**.

Create a New Internet Connection

Highlight "New Connection" and press **X**.

Follow onscreen button prompts on the PSP™ to setup the new connection.

Create a Login Account

1. Select "Create Account" from the Login screen in multiplayer infrastructure and press **X**.
2. Press the right and left buttons to highlight a date field and press **R** and **L** to change Day, Month and Year.
3. Press up or down to highlight "Submit" and press **X**.
4. Move the cursor to "Username" and press **X**.
5. Choose a username, this name will be displayed on the Leaderboards and used on future logins.
6. Move the cursor to "Password" and press **X**.
7. Choose a password, this password will be required each time you login to infrastructure.
8. Move the cursor to "Password Confirm" and press **X**.
9. Re-enter the chosen password.
10. Highlight "Create" and press **X**.

Note: Usernames and passwords must be between 4 and 15 alphanumeric characters and both are case-sensitive.

Hosting a Multiplayer Game

From the Main Lobby screen press **START**.

On the Game Creation screen, use the directional buttons to highlight the various options and press **L** or **R** to alter the settings for that option. When finished, press **START** to jump to the Game Lobby. Pressing **○** will return you to the Main Lobby screen.

Game Name

Enter a custom name for your game.

Number of Players

Select the number of players for your game.

Note: Co-Op games are limited to 2 players and Team games require 4 players.

Password

Enter a password for your game, if desired.

Game Type

Select the type of multiplayer game you would like to host.

Arena

Select the arena you would like to play in.

Note: This option is not available in Co-Op Campaign games.

Enemies

With this option selected, enemies will also be populated in the Arena.

Note: This option is not available in Co-Op Campaign games.

Respawn

Set the amount of time in seconds before slain enemies will respawn.

Note: This option is only available in games where the Enemies option is selected.

Custom Victory Rule

This option is variable depending on the type of game selected and enables you to fine-tune the victory rule to suit your taste.

Joining a Multiplayer Game

From the Main Lobby screen use the directional buttons to highlight the Game List element and press **X**. Use the directional buttons to highlight the game you would like to join and press **X**. If the game you are trying to join requires a password, you will be prompted to enter it. Press **○** to cancel.

Credits

GAME DEVELOPMENT

Producer

Robert Hill

Lead Programmer

Brandon Bogle

Programming

John Abad
Brian Crowder
Michael Roca
Andrew Skirvin

Lead Artist

Todd Luallen

Lead Environment Artist

Kurt Klockau

Art

Satoshi Arakawa
Kevin Burns
Patrick Dailey
Jonathan Rohland
Damian Schouweiler
Kyushik Shin
Sebastian Strzalkowski

Lead Designer

Bill Trost

Design

Jeremy Albert
Amanda Flock
Nels Nelson

Director of Development

Nicholas Bellaeff

Writer

Marianne Krawczyk

Additional Programming

Ian McCown

Additional Art

Stone Perales
Victor Soto
Nathan Temple

Additional Design

Shad Halsey
Matt Higby
Joe Russo
John Troy

Art Direction Advisors

Mat Broome
Joe Shoopack

Cut Scene Animators

Pako Bagur
Raji Barbir
Floyd Bishop
Rebecca Dominguez
Paul Mikulecky
Dan Santos

Interstitial Post Production

Brian Patience

Special Thanks

Paul Balon
Nathan Bosia
Aaron Brunstetter
Chris Clark
Matt DeVico
Chris Eden
Mohammed Khan
Russ Patterson
Tamara Sanderson
Rolando Simeon
Robert Trickey
Glen Van Datta

AUDIO

Audio Director
Michael Smith

Project Manager

Glenn Snyder

Sound Designers

Chad Mossholder, Fryda Wolff

Voice Over Coordinator

Joy Kosenski

Music Composition

Laura Karpman

VOICE OVER

Produced by

Sony Online Entertainment

In Association with

ZRO Limit Productions
&
Animaze, Inc.

Producers

Yutaka Maseba
Haruyo Kanesaku

Assistant

Kanae Seki

ADR Director

Kevin Seymour

Recording Facility

Magnitude 8 Post
Les Claypool III

Digital ADR Tracking

Collin McQueen
Preston Martin

STUDIO MANAGEMENT

Vice President, Development

John Donham

Director of Development

Nicholas Bellaeff

Vice President of Customer Service & Quality Assurance

George Scotto

Executive Director of Quality Assurance

Tony Rado

Quality Assurance Manager

Rob Thompson

Quality Assurance Supervisors

Shad Halsey, Jason Boone,
Andy Lamp, Taylor Haley

Quality Assurance Lead

Christopher Fritchhoff

Quality Assurance Analysts

Marlon Barroquillo, Kevin Shoemaker,
Christine Penley, Ryan Lynch,
Anthony Port, Zack Simms,
Jason Woerner, Joe Spivey,
Michael Rose, Dio Elgin,
Michael Lunn, Charles Mack,
Brian Doss, Rusty Trevino,
Chris Irwin, Rod Haza,
Nick Munford and Ryan Wells

TRC Specialists

David R. Curington, Vincent Pang

Compatibility Lab

Ryan Antonelli, Jason Zimmerman,
Chris Johnson, Josh Potter, Joe Obezo

SALES AND MARKETING

Sr. Vice President of Sales and Marketing
Torrie Dorrell

Sr. Vice President of Sales

Don Vercelli

Vice President of Marketing
Michael Lustenberger

Director of Corporate Communications
Chris Kramer

Sr. Brand Manager
Christopher Sturr

Public Relations Manager
Katie Uhlman

Associate Brand Manager
Heathcliff Hatcher

Marketing Coordinator
Ari Ziegel

Sales & Marketing Team
Caroline Amiguet, Jen Belfield,
Morgan DaVersa, Katie Gallegos,
Steve Gefrom, Clayton Kroh,
Robert Liguori, Mike Meyer,
Barbara Oppelz, Brian Patience,
Taina Rodriguez, Taskin Sayilir,
Courtney Simmons, Stacey Speck,
Phil Tish, Lauren Zeiger

BUSINESS DEVELOPMENT
Cindy Armstrong

INTERNATIONAL OPERATIONS
Executive Director of International Operations
Matt Sivertson

Localization Managers
David Kim, Stacey Sofia-McDaniel,
James Whisenant

Technical Lead for International Operations
Robert McEntee

Localization Team
Katty Bashir, Bernard Dambron,
Stacy Griebel, Jacky Ho,
Devon Kim, Christopher Lee,
Lina Liang, Bill Mauer, Jason Polk,
Adriano Vasco, Kumiko Yasa

SPECIAL THANKS
Web Presence
Ayzenberg Group
Kelly Conway
Steve Weiss
Caroline Fabri
Tracy Running
Gerald Martin
Maimoona Block

End User Agreement and Software License

UNTOLD LEGENDS™ THE WARRIOR'S CODE™ END USER AGREEMENT AND SOFTWARE LICENSE

THIS UNTOLD LEGENDS™ THE WARRIOR'S CODE™ USER AGREEMENT AND SOFTWARE LICENSE (THE "AGREEMENT") IS A LEGAL AGREEMENT BETWEEN YOU AND SONY ONLINE ENTERTAINMENT INC. ("SOE" OR "WE") WITH RESPECT TO YOUR USE OF UNTOLD LEGENDS™ THE WARRIOR'S CODE™ FOR THE PSP™ (PLAYSTATION® PORTABLE) SYSTEM INCLUDING ANY GAME SOFTWARE, HARDWARE (INCLUDING THE UNIVERSAL MEDIA DISC™ ("UMD™")), PRINTED, ELECTRONIC, AND ONLINE MATERIALS AND ASSOCIATED MEDIA AND DOCUMENTATION (COLLECTIVELY THE "GAME"), BY INSTALLING, COPYING, RUNNING, DISPLAYING, ACCESSING OR OTHERWISE USING THE GAME, YOU AGREE TO BE BOUND BY THE TERMS AND CONDITIONS OF THIS AGREEMENT. IF YOU DO NOT AGREE TO THE TERMS AND CONDITIONS OF THIS AGREEMENT, DO NOT INSTALL OR USE THE GAME AND YOU SHOULD CONTACT YOUR PLACE OF PURCHASE REGARDING ITS RETURN POLICY FOR THIS PRODUCT. IF YOU HAVE ANY QUESTIONS REGARDING THESE TERMS AND CONDITIONS, PLEASE CONTACT CUSTOMER SERVICE AT ULSupport@soe.sony.com.

1. Subject to the terms of this Agreement, we hereby grant to you a non-exclusive, limited, personal, revocable license to use the Game. The Game also may include certain features that enable you to create custom content, such as character features ("Custom Content") for your non-commercial use with the Game. All Custom Content is part of the Game as defined herein. You may not copy (except to make one necessary back-up copy), distribute, sell, auction, rent, lease, loan, modify or create derivative works (other than Custom Content to be solely used with the Game), adapt, translate, perform, display, sublicense or transfer all or any portion of the Game. You may not copy any of the written materials accompanying the Game. You may not reverse engineer, disassemble or decompile all or any part of the Game except to the extent that this restriction is expressly prohibited by applicable law. The Game may contain license management software that restricts your use of the Game.

2. To play the Game, including multi-player versions of the Game, you must have all applicable or required hardware and software to operate the Game (which depending on whether you are playing a single player version, or one of the multiplayer versions of the Game, may include, without limitation, a PSP™ system and Memory Stick Duo™) which we do not provide and which are sold separately. In addition to any fees described herein, you are responsible for paying all applicable taxes (including those we are not required to collect) and for all hardware (including, without limitation, the PSP™ system) software, service and other costs you incur to play the Game. This Agreement does not entitle you to any subsequent releases of the Game, nor to any expansion packs or similar ancillary products. You understand that we may update or otherwise enhance the Game at any time and in doing so incur no obligation to furnish such updates to you pursuant to this Agreement.

3. We may amend this Agreement at any time in our sole discretion. Such amendments shall be effective whenever we make the notification available for your review.

4. You may transfer your rights under this Agreement provided that the recipient agrees to the terms of this Agreement.

5. We may terminate this Agreement immediately and without notice if you breach this Agreement or infringe any intellectual property rights, or upon gameplay or any player activity whatsoever which we, in our sole discretion, determine is inappropriate and/or in violation of the spirit of the Game. If we terminate this Agreement under these circumstances, you must destroy all copies of the Game and Custom Content (and all parts thereof).

6. Except for the revocable, limited license expressly granted hereunder, we and our suppliers shall retain all rights, title and interest, including, without limitation, ownership of all intellectual property rights relating to or residing in, the PSP™ system, the UMD™, the Memory Stick Duo™, the Game, all copies thereof, and all game character data in connection therewith. You acknowledge and agree that you have not and will not acquire or obtain any intellectual property or other rights, including any right of exploitation, of any kind in or to the Game, including, without limitation, in any character(s), Custom Content, item(s), or other material or property, and that all such Custom Content, property, material and items are exclusively owned by us. The Game is copyrighted and is protected by United States copyright laws and international treaty provisions. You acknowledge that the Game contains valuable trade secrets of SOE, and that SOE and/or its licensors own all intellectual property rights in and to the Game, including, without limitation, all patent rights, copyrights, inventions, trade secret rights, trade dress rights, trademark rights and intellectual property rights therein and thereto. You may not remove the copyright and other proprietary rights notices from the Game. You agree that this Agreement shall be retained with all printed and electronic copies of the Game and documentation constituting the Game. You agree to prevent any unauthorized copying or distribution of the Game. Except for the license as expressly provided herein, SOE does not grant you any express or implied right in any patents, copyrights, trademarks, or trade secret information of SOE and/or its licensors.

7. You may not:

(i) use any unauthorized third party software to modify the Game to change multiplayer Game play;

(ii) create, facilitate, host, link to or provide any other means through which the Game may be played by others, such as through server emulators, except as may be permitted by the unmodified Game and supported by SOE;

(iii) exploit the Game or any of its component parts for any commercial purpose (including but not limited to, exploitation at a cyber cafe or gaming center) without prior written consent of SOE;

(iv) sell or auction (or host or facilitate the ability to allow others to buy, sell or auction) any Custom Content, copyrighted or proprietary material relating to the Game; or

(v) host or provide any matchmaking service for the Game.

8. **SONY ONLINE ENTERTAINMENT INC. WARRANTS TO THE ORIGINAL PURCHASER OF THIS PRODUCT THAT THE UMD™ IS FREE FROM DEFECTS IN MATERIAL AND WORKMANSHIP FOR A PERIOD OF NINETY (90) DAYS FROM THE ORIGINAL DATE OF PURCHASE. SONY ONLINE ENTERTAINMENT INC. AGREES FOR A PERIOD OF NINETY (90) DAYS TO EITHER REPAIR OR REPLACE, AT ITS OPTION, THIS PRODUCT. YOU MUST CALL (858) 537-0898 TO RECEIVE INSTRUCTIONS TO OBTAIN REPAIR/REPLACE SERVICES.**

THIS WARRANTY IS IN LIEU OF ALL OTHER WARRANTIES AND NO OTHER REPRESENTATIONS OR CLAIMS OF ANY NATURE SHALL BE BINDING ON OR OBLIGATE SONY ONLINE ENTERTAINMENT INC. EXCEPT AS DESCRIBED HEREIN. WE AND OUR SUPPLIERS EXPRESSLY DISCLAIM ALL WARRANTIES OR CONDITIONS OF ANY KIND, EXPRESS, IMPLIED OR STATUTORY, INCLUDING WITHOUT LIMITATION THE IMPLIED WARRANTIES OF TITLE, NONINFRINGEMENT, MERCHANTABILITY AND FITNESS FOR A PARTICULAR PURPOSE. EXCEPT AS DESCRIBED HEREIN, WE PROVIDE THE UMD™ AND THE GAME AND ALL OTHER SERVICES "AS IS." ANY IMPLIED WARRANTIES OF MERCHANTABILITY AND FITNESS FOR A PARTICULAR PURPOSE ARE LIMITED TO THE NINETY (90) DAY PERIOD DESCRIBED ABOVE. IN NO EVENT WILL SONY ONLINE ENTERTAINMENT INC. OR ITS SUPPLIERS BE LIABLE FOR INCIDENTAL, INDIRECT, SPECIAL OR CONSEQUENTIAL DAMAGES (HOWEVER ARISING, INCLUDING NEGLIGENCE) RESULTING FROM POSSESSION, USE OR MALFUNCTION OF THE SONY ONLINE ENTERTAINMENT INC. SOFTWARE PRODUCT. OUR LIABILITY TO YOU OR ANY THIRD PARTIES IS LIMITED TO \$100. Without limiting the foregoing, we do not ensure continuous, error-free, secure or virus-free operation of the product or continued availability of the PSP™ system.

Some jurisdictions do not allow limitations as to how long an implied warranty lasts and/or exclusions or limitations of consequential damages or liability, so the above limitations and/or exclusions of liability may not apply to you. This warranty gives you specific legal rights and you may also have other legal rights which vary from jurisdiction to jurisdiction.

9. We are not liable for any delay or failure to perform resulting from any causes beyond our reasonable control. You agree to indemnify, defend and hold harmless SOE, SOE's affiliated companies and suppliers, and all of their respective officers, directors, owners, agents, employees, information providers, affiliates, licensors and licensees (collectively, "Indemnified Parties") from and against any and all liability and costs including, without limitation, attorneys' fees and costs, incurred by the Indemnified Parties in connection with any claim arising out of (i) any breach by you of the Agreement or the foregoing representations, warranties and covenants or (ii) your use of the Game, PSP™ system, UMD™, Memory Stick Duo™ (for PSP™ system) and any other hardware or software required to play the Game.

10. You shall comply with all applicable laws regarding your playing of the Game on any fixed media on which it appears (including the UMD™). Without limiting the foregoing, you may not use or otherwise export or re-export the Game except in full compliance with all applicable laws and regulations, including, without limitation, the laws of the United States.

11. This Agreement is governed in all respects by the laws of the State of California as such laws are applied to agreements entered into and to be performed entirely within California between California residents. The UN Convention on Contracts for the International Sale of Goods is expressly disclaimed. Both parties submit to personal jurisdiction in California and further agree that any cause of action relating to this Agreement shall be brought in the County of San Diego, State of California (if under State law) or the Southern District of California (if under federal law). If any provision of this Agreement is held to be invalid or unenforceable, such provision shall be struck and the remaining provisions shall be enforced. Our failure to act with respect to a breach by you or others does not waive our right to act with respect to subsequent or similar breaches. Except as set forth herein, you may not assign or transfer this Agreement or your rights hereunder, and any attempt to do so is void. This Agreement sets forth the entire understanding and agreement between us and you with respect to the subject matter hereof. Except as provided herein, this Agreement may not be amended except in a writing signed by both parties.

12. All services hereunder are offered by Sony Online Entertainment Inc., located at 8928 Terman Court, San Diego, California 92121. Our phone number is (858) 537-0898. The Complaint Assistance Unit of the Division of Consumer Services of the Department of Consumer Affairs may be contacted in writing at 400 R Street, Sacramento, CA 95814, or by telephone at (800) 952-5210.

13. The Game is a "commercial item" if acquired under agreement with the U.S. Government or any contractor therewith in accordance with 48 CFR 12.212 of the FAR and, if acquired for Department of Defense (DoD) units, 48 CFR 227-7202 of the DoD FAR Supplement, or any succeeding similar regulations.

Terms of Use

This service (the "Service") is offered to you conditioned on your acceptance, without modification, of the terms and conditions set forth below (the "Terms of Use"). Sony Online Entertainment Inc. or, for customers in the European Union, SOE Europe Limited (collectively, "SOE" or "we") may change, add or remove any part of the Terms of Use at any time by posting a notice of such changes, and such modification(s) shall become effective immediately upon posting.

Current SOE games for which the Service is available (individually and collectively referred to as the "Game"; Game software, hardware and subscriptions, if any, are sold separately):

Untold Legends™ The Warrior's Code™

Field Commander™

SOE reserves the right, at any time in its sole discretion, to add or delete any Game to the Service.

1. Subject to the terms and conditions of these Terms of Use, SOE hereby grants you a limited, personal, revocable, non-transferable, non-licensable license to use the Service solely for non-commercial purposes in connection with your use of the Game for which the Service is offered and for no other purpose. You may not use the Service for any business or commercial purpose unless you obtain SOE's prior written permission, which may be withheld in SOE's sole and absolute discretion. SOE may discontinue the Service, in whole or in part, to any user or to all users, at any time in its sole discretion. Any rights that SOE does not expressly grant you in these Terms of Use are expressly reserved by SOE.

2. You are bound by the Station Terms of Service (www.sonyonline.com/tos/tos.jsp) while using, viewing or accessing the Service and by the End User License Agreement and rules of conduct for each Game offered by SOE as part of the Service and with which you are using the Service (for example, if SOE offers Untold Legends The Warrior's Code as part of the Service and you use the Service with Untold Legends The Warrior's Code, you are bound by the Untold Legends The Warrior's Code User Agreement and Software License, available in the respective game manuals; these Terms of Use shall supplement, but not replace, the Station Terms of Service. The Privacy Policy that governs your use of the Service is located at www.sonyonline.com/tos/privacy.jsp. SOE reserves the right to suspend or terminate your access to the Service if you violate any of these Terms of Use; obviously, you may lose access to any game character(s) on any account that SOE has suspended or terminated – without any right to refund or recompense.

3. You shall not, through, via or in connection with your use of the Service:

(i) transmit, post or distribute, or facilitate the transmission, posting or distribution of any message, computer software, data, databases, text, displays, screenshots, maps, user interfaces, artwork, characters, items, software or graphic files, information or other materials, whether in written, digital, machine-readable, electronic or visual form ("Content") that is unlawful, harmful, threatening, abusive, harassing, tortious, defamatory, vulgar, obscene, libelous, pornographic or harmful to minors, that may be invasive of another's right of privacy or publicity, hateful, racially, ethnically or otherwise objectionable;

(ii) impersonate any person or entity, including but not limited to, an SOE official, employee or representative, forum leader or host or falsely state or otherwise misrepresent your affiliation with a person or entity;

(iii) post, transmit or distribute or facilitate the posting, transmission or distribution of any Content that you do not have a right to post, transmit or distribute under any law or under contractual or fiduciary relationships (such as nondisclosure agreements) and/or to prepare derivative works of the Content;

(iv) post, transmit, distribute or facilitate the posting, transmission or distributing of any Content that contains a virus, trojan horse, keystroke logger, worm, bot, time bomb, cancelbot, corrupted data or other computer programming routines that are intended to damage, detrimentally interfere with, surreptitiously intercept or expropriate any system, data or personal information;

(v) use the Service in a manner that adversely affects the availability of its resources to other users (e.g., denial of service attack, excessive shouting (use of all caps), flooding [continuous posting of repetitive text] or excessively large embedded images);

(vi) post, transmit, distribute or facilitate the posting, transmission or distribution of any unsolicited advertising, promotional materials, "junk mail", "spam", "chain letters", "pyramid schemes" or any other form of solicitation;

(vii) intentionally or unintentionally, or encourage or facilitate the ability of any other person to, violate any applicable local, state, national or international law, rule or regulation;

(viii) upload or transmit any Content that infringes any patent, trademark, trade secret, copyright or other proprietary rights ("Rights") of any party or remove or modify any copyright or trademark notice on any part of the Content;

(ix) use any third party hardware, devices or software or modify any game client, software, or Content (such as through macros, hacks and cheats) to modify or unfairly impact the Service; allow for unintended game play or use of the Service or to decrypt, modify, parse, scrape, interrupt or intercept any data or information relating to the Service or transmitted between client and server; in addition, you may not create, facilitate, host, transmit, re-transmit, mirror, link or provide any other means through which the Service may be accessed or viewed by others, such as through server emulators or mirrored websites; or

(x) use, modify, copy, publish, post, transmit, make derivative works of, adapt, perform, display, synchronize, commercialize or exploit all or any portion of the Content or any other content other than as expressly provided herein; or

(xi) allow any other person to access your Service account; you are liable for all activities conducted through your Service account; or

(xii) cheat.

4. All computer software, displays, artwork, music and other components of the Service (collectively, the "Software") are the copyrighted intellectual property of SOE or its licensors. You acknowledge and agree that you have not and will not acquire or obtain any intellectual property or other rights, including any right of exploitation, of any kind in or to the Content, the Service, or the Game, or any portion of any of the above, including, without limitation, in any artwork, maps, vehicles, music, character(s), item(s), coin(s), text, graphics, data, information or other material or property, and that all such property, material, data, information and items are exclusively owned by SOE. You shall not:

(i) copy, rent, lease, sublicense all or any portion of the software or UMD;

(ii) modify or prepare derivative works of the software or UMD;

(iii) re-transmit or mirror the software or UMD;

(iv) remove or modify any copyright or trademark notice on any part of the software or UMD; or

(v) reverse engineer, disassemble or decompile any part or all of the software or UMD.

5. You understand that anything sent via the Service is the sole responsibility of the sending party. SOE has no obligation to monitor or supervise the Service, expressly disclaims any representation that it will monitor or supervise the Service—but also expressly reserves the right to monitor or supervise the Service in its sole discretion. You understand that anything that you transmit through the Service is routed through SOE's servers, you have no expectation of privacy in anything that you so transmit (even if you intend it to be a private message) and you expressly consent to SOE's monitoring of anything that you send, receive and/or store through the Service. We cannot ensure that your private communications and other personally identifiable information will not be disclosed to third parties. For example, we may be forced to disclose information to the government or third parties under certain circumstances, or third parties may unlawfully intercept or access transmissions or private communications. Additionally, we can (and you authorize us to) disclose any information about you to private entities, law enforcement or other government officials as we, in our sole discretion, believe necessary or appropriate to investigate or resolve possible problems or inquiries. Furthermore, if you request any technical support, you consent to our remote accessing and review of the hardware and software you use in connection with the Service for the purposes of support and debugging. You agree that we may communicate with you via telephone, email or any similar technology for any purpose relating to the Service and any services or software which may in the future be provided by us or on our behalf. You acknowledge that any and all character data and other data and information relating to the Game and the Service is stored and is resident on our servers, and any and all communications that you make within or in connection with the Service (including, but not limited to, messages solely directed at or to another player or group of players) traverse through our servers, may or may not be monitored by us or our agents, you have no expectation of privacy in any such communications and expressly consent to such monitoring of communications you send and receive. You acknowledge and agree that we may transfer Game and Service account information (including your personally identifiable information and personal data) to the United States or other countries or may share such information with our licensees and agents in connection with the Service.

As part of your Service account, you may be able to upload Content to our servers in various forms, such as in the form of maps, vehicles, items, website posts, in-game posts and chat, and in chat rooms and similar user-to-user areas. We may take any action with respect to your Content if we believe it may create liability for you or may cause us to lose (in whole or in part) the services of our Internet Service Providers (ISPs) or other suppliers. You hereby grant to us a worldwide, perpetual, irrevocable, royalty-free, sublicensable (through multiple tiers) right to exercise all rights of any kind or nature associated with the Content, including, without limitation, all intellectual property rights, and all ancillary and subsidiary rights thereto, in any languages and in any media now known or not currently known, in association with the Content.

6. When you make your IP address available on the Service you have made it public and, accordingly, you should take appropriate measures (such as a firewall) to safeguard your hardware and data from attack or unauthorized access by third parties. You expressly release SOE, its affiliated companies and its and their officers, directors, employees and agents from any claim or loss you may suffer as a result of any third party access to your hardware or data.

7. NEITHER SOE, ANY COMPANY AFFILIATED WITH SOE, NOR ANY OF THEIR RESPECTIVE DIRECTORS, OFFICERS, EMPLOYEES OR AGENTS, MAKE ANY WARRANTY WHATSOEVER, INCLUDING, WITHOUT LIMITATION, THAT THE SERVICE WILL BE UNINTERRUPTED, SECURE, VIRUS FREE OR ERROR FREE. WE ARE NOT LIABLE FOR ANY DELAY OR FAILURE TO PERFORM RESULTING FROM ANY CAUSES BEYOND OUR REASONABLE CONTROL. FURTHER, WE CANNOT AND DO NOT PROMISE OR ENSURE THAT YOU WILL BE ABLE TO ACCESS YOUR SERVICE ACCOUNT OR THE SERVICE WHENEVER YOU WANT, AND THERE MAY BE EXTENDED PERIODS OF TIME WHEN YOU CANNOT ACCESS YOUR SERVICE ACCOUNT OR THE SERVICE. YOU ASSUME THE ENTIRE RISK AS TO THE RESULTS AND PERFORMANCE OF THE SERVICE IN CONNECTION WITH YOUR HARDWARE AND SOFTWARE, AND YOU ASSUME THE ENTIRE COST OF ALL SERVICING, REPAIR AND/OR CORRECTION OF YOUR HARDWARE AND SOFTWARE. THE SERVICE AND SOFTWARE ARE PROVIDED ON AN "AS IS" BASIS WITHOUT WARRANTIES OF ANY KIND, EITHER EXPRESS OR IMPLIED, INCLUDING, WITHOUT LIMITATION, WARRANTIES OF TITLE OR NON-INFRINGEMENT OR IMPLIED WARRANTIES OF MERCHANTABILITY OR FITNESS FOR A PARTICULAR PURPOSE, OTHER THAN THOSE WARRANTIES WHICH ARE INCAPABLE OF EXCLUSION, RESTRICTION OR MODIFICATION UNDER THE LAWS APPLICABLE TO THIS AGREEMENT. USE OF THE SERVICE IS AT YOUR SOLE RISK. THE DISCLAIMERS OF LIABILITY CONTAINED IN THIS SECTION APPLY TO ANY DAMAGES OR INJURY CAUSED BY ANY FAILURE OF PERFORMANCE, ERROR, OMISSION, INTERRUPTION, DELETION, DEFECT, LOSS OF DATA OR INFORMATION, DELAY IN OPERATION OR TRANSMISSION, COMPUTER VIRUS, COMMUNICATION LINE FAILURE, THEFT OR DESTRUCTION OR UNAUTHORIZED ACCESS TO, ALTERATION OF OR USE OF THE SERVICE, WHETHER FOR BREACH OF CONTRACT, TORTIOUS BEHAVIOR, NEGLIGENCE, OR UNDER ANY OTHER CAUSE OF ACTION. IN NO EVENT WILL SOE, ANY COMPANY AFFILIATED WITH SOE, OR ANY OF ITS OR THEIR RESPECTIVE DIRECTORS, OFFICERS, EMPLOYEES OR AGENTS, BE LIABLE FOR (A) ANY DIRECT, INDIRECT, SPECIAL, INCIDENTAL, OR CONSEQUENTIAL DAMAGES ARISING OUT OF OR RELATED TO (I) THE USE OF OR INABILITY TO USE THE SERVICE, (II) THE BREACH OF ANY REPRESENTATION OR WARRANTY, (III) THE USE BY YOU OF THE SERVICE AND/OR (IV) THE DOWNLOADING OF ANY SOFTWARE OWNED OR OPERATED BY ANY THIRD PARTY, IN CONNECTION WITH THE SERVICE OR

(B) ANY INDIRECT, SPECIAL, INCIDENTAL, OR CONSEQUENTIAL DAMAGES ARISING OUT OF OR RELATED TO THE SERVICE, WHETHER FOR BREACH OF WARRANTY OR ANY OBLIGATION ARISING THEREFROM OR OTHERWISE, WHETHER LIABILITY WAS ASSERTED IN CONTRACT OR TORT (INCLUDING NEGLIGENCE AND STRICT PRODUCT LIABILITY) AND IRRESPECTIVE OF WHETHER SOE WAS PREVIOUSLY ADVISED OF THE POSSIBILITY OF SUCH DAMAGES. IN THE EVENT OF ANY CLAIM RELATING TO THE PERFORMANCE OR NONPERFORMANCE BY SOE PURSUANT TO THESE TERMS OF USE, OR IN ANY OTHER WAY CONCERNING THE SERVICE, IS MADE BY YOU, THE ACTUAL DAMAGES TO WHICH YOU MAY BE ENTITLED SHALL BE LIMITED TO THE GREATER OF (I) \$50.00 OR (II) THE FEES, IF ANY, PAID BY YOU TO SOE FOR USE OF THE SERVICE. SOME JURISDICTIONS DO NOT ALLOW THE EXCLUSION OF IMPLIED WARRANTIES, SO THE ABOVE EXCLUSION MAY NOT APPLY TO YOU.

8. SOE shall have the right to terminate or suspend your use of the Service, effective immediately and without prior notice, in the event of any conduct by you which SOE, in its sole discretion, considers to be unacceptable, or for conduct that SOE believes is a violation of the Terms of Use contained herein or any policies or guidelines posted by SOE on The Station (www.station.com), or for other conduct which SOE believes, in its sole discretion, is harmful to SOE or other Service users. SOE reserves the right to deny registration of any individual and, thus, to deny access to the Service to any individual.

9. You agree to indemnify, defend and hold harmless SOE, SOE's affiliated companies, and all of its and their respective officers, directors, owners, agents, employees, information providers, affiliates, licensors and licensees (collectively, "Indemnified Parties") from and against any and all liability and costs including, without limitation, attorneys' fees and costs, incurred by the Indemnified Parties in connection with any claim arising out of (i) any breach by you of the Terms of Use or the foregoing representations, warranties and covenants or (ii) your use of the Service.

10. The Service is controlled and operated by SOE from its offices within the State of California, United States of America; but may be served remotely. SOE makes no representation that the Service is available for use in any particular location. Those who choose to access the Service from countries other than the United States do so on their own initiative and are responsible for compliance with local laws, if and to the extent local laws are applicable. The Software, Service and Content is subject to United States export controls. The Software may NOT be downloaded or otherwise exported or re-exported (i) into (or to a national or resident of) Cuba, Iraq, Libya, North Korea, Iran, Syria, or any other country to which the U.S. has embargoed goods; or (ii) to anyone on the U.S. Treasury Department's list of Specially Designated Nationals or the U.S. Commerce Department's Table of Deny Orders (including, but not limited to, the Denied Persons List). By downloading or using the Software, you represent and warrant that you are not located in, under the control of, or a national or resident of any such country or on any such list.

11. These Terms of Use constitute the entire agreement between SOE and you with respect to the subject matter hereof, and supersedes all previous agreements between the parties with respect to such subject matter, whether written or oral. No waiver by either party of any breach or default hereunder shall be deemed to be a waiver of any preceding or subsequent breach or default. The section headings used herein are for convenience only and shall not affect the interpretation of this Agreement. If any provision of these terms shall be unlawful, void, or for any reason unenforceable, then that provision shall be deemed severable from these terms and shall not affect the validity and enforceability of any remaining provisions.

12. For users from outside the European Union, this Agreement shall be construed in accordance with the laws of the State of California, without regard to California's principles of conflict of laws, and you hereby consent to personal and exclusive jurisdiction by and venue of the state and federal courts sitting in the State of California, Southern District. For users from within the European Union, this Agreement shall be construed in accordance with the laws of the United Kingdom and you hereby consent to personal and exclusive jurisdiction and exclusive venue of the courts within the United Kingdom.

13. All services hereunder are offered by Sony Online Entertainment Inc., located at 8928 Terman Court, San Diego, California 92121. Our phone number is (858) 537-0898.

The communications function of this product includes software developed by the NetBSD Foundation, Inc. and its contributors. For a complete list of contributors please see: <http://www.scei.com.jp/psp-license-pspnet.txt>.

HOTSPOT AND INTERNET SERVICE PROVIDERS

SCEA and its affiliated companies are not affiliated with any of the Internet service providers (ISPs) or HotSpot Operators (collectively "Service Providers") that you may connect to when you wirelessly access the Internet and are not responsible for any damages or injury arising from or related to your use of these services. When you access an ISP through a HotSpot you are providing information directly to the Service Provider and not to SCEA. This information is collected by the Service Provider and is not shared with SCEA. SCEA does not control the Service Provider's use of the information you provide. Before wirelessly accessing the Internet you should carefully read the Service Provider's advertisements, user agreements/terms and conditions and privacy policy carefully. If you are unclear whether your use of the Service Provider's service may involve charges or whether all of the Service Provider's advertised features will be available through the PSP system, or if you have any other questions concerning their services, please contact the Service Provider directly.

Notes:

Notes:



❖34❖

❖35❖

Notes:

