

STAR

DARK FORCES

WARS

Manual: coded
Transmissions



LIMITED WARRANTY

Notice: LucasArts Entertainment Company ("LEC") reserves the right to make changes in the product described in this manual at any time and without notice.

The enclosed software product and this manual are copyrighted and all rights are reserved by LEC and Lucasfilm Ltd. No part of this manual or any of the accompanying materials may be copied, reproduced, or translated in any form or medium without the prior written consent of LEC and Lucasfilm Ltd.

LEC warrants to the original consumer purchaser that the media furnished in this product will be free from defects in materials and workmanship under normal use for a period of ninety (90) days from the date of purchase (as evidenced by your receipt). If the media supplied as part of this product prove to be defective, and provided that the consumer purchaser returns the media to LEC in accordance with the instructions in the following paragraph, LEC will replace the defective media: (a) free of charge to the consumer purchaser, if the media proves to be defective within the ninety (90) day period following the date of purchase, and (b) if the media proves to be defective after the expiration of the ninety (90) day warranty period, LEC will replace the defective media for a fee of \$7.50 per floppy disk or \$5.00 per Compact Disc (as applicable).

To obtain a replacement floppy disk or CD, please return the floppy disk or CD only, postage prepaid, to LEC, at the address below, accompanied by proof of date of purchase, a description of the defect, and your name and return address. To replace defective media after expiration of the warranty period, send the floppy disk or CD only, postage prepaid, to LEC at the address below, enclosing proof of purchase, a description of the defect, your name and return address, and a check for \$7.50 per floppy disk or \$5.00 per Compact Disc (as applicable). LEC will mail a replacement to you.

THE ENCLOSED SOFTWARE, MEDIA AND DOCUMENTATION ARE PROVIDED "AS IS." EXCEPT FOR THE NINETY (90) DAY WARRANTY REGARDING DEFECTIVE MEDIA SET FORTH ABOVE, LEC MAKES NO WARRANTIES WHATSOEVER REGARDING THE ENCLOSED SOFTWARE, MEDIA AND DOCUMENTATION, WHETHER WRITTEN OR ORAL, EXPRESSED OR IMPLIED, INCLUDING, WITHOUT LIMITING THE GENERALITY OF THE FOREGOING, WARRANTIES AND CONDITIONS OF MERCHANTABILITY OR FITNESS FOR A PARTICULAR PURPOSE, EVEN IF LEC HAS BEEN INFORMED OF SUCH A PURPOSE. ACCORDINGLY, THE ENTIRE RISK AS TO THE USE, RESULTS AND PERFORMANCE OF THE SOFTWARE, MEDIA AND DOCUMENTATION IS ASSUMED BY YOU. IN NO EVENT WILL LEC BE LIABLE TO YOU OR ANYONE ELSE FOR ANY CONSEQUENTIAL, SPECIAL, OR INDIRECT DAMAGES RESULTING FROM POSSESSION, USE, OR MALFUNCTION OF THIS PRODUCT, INCLUDING WITHOUT LIMITATION, DAMAGE TO PROPERTY AND, TO THE EXTENT PERMITTED BY LAW, DAMAGES FOR PERSONAL INJURY, EVEN IF LEC HAS BEEN ADVISED OF THE POSSIBILITY OF ANY SUCH DAMAGES OR LOSS. SOME STATES DO NOT ALLOW LIMITATIONS ON THE DURATION OF IMPLIED WARRANTIES AND/OR THE EXCLUSION OR LIMITATION OF INCIDENTAL OR CONSEQUENTIAL DAMAGES, AND THUS THE PRECEDING LIMITATION AND/OR EXCLUSIONS AND LIMITATIONS MAY NOT APPLY TO YOU. THIS WARRANTY GIVES YOU SPECIFIC LEGAL RIGHTS, AND YOU MAY HAVE OTHER RIGHTS DEPENDING ON THE LAWS IN YOUR STATE. YOU AGREE THAT THE LIABILITY OF LEC ARISING OUT OF ANY KIND OF LEGAL CLAIM (WHETHER IN CONTRACT, TORT, OR OTHERWISE) WILL NOT EXCEED THE AMOUNT YOU ORIGINALLY PAID FOR THE USE OF THIS PRODUCT.

Dark Forces game © 1994 Lucasfilm Ltd. and LucasArts Entertainment Company. All Rights Reserved. Used Under Authorization. Star Wars is a registered trademark of Lucasfilm Ltd. Dark Forces is a trademark of Lucasfilm Ltd. The LucasArts logo is a registered trademark of LucasArts Entertainment Company. iMUSE is a trademark of LucasArts Entertainment Company. iMUSE U.S. Patent No. 5,315,057. All other trademarks are hereby acknowledged as the proprietary property of their respective owners.

LucasArts Entertainment Company, P.O. Box 10307, San Rafael, CA 94912

TABLE OF CONTENTS

GETTING STARTED	6
SIMULATION CONTROLS	7
MAIN MENU	9
CODED TRANSMISSIONS FROM JAN ORS TO KYLE KATARN	10
YOUR PERSONAL DATA ASSISTANT	10
THE HEADS UP DISPLAY	11
ENEMIES	11
WEAPONS AND OTHER USEFUL ITEMS	14
CREDITS	17
IMPORTANT NUMBERS	19

CODED TRANSMISSION: JAN ORS TO MON MOTHMA

SUBJECT: Reliability of Kyle Katarn

I understand there are questions regarding our continued use of Kyle as a freelance agent, both because of his background in Imperial service and his continued status as an occasional non-aligned mercenary rather than committing to regular service for the Alliance.

It's easy to see how certain individuals who either encountered him during his time with the Empire, or lost friends or loved ones during operations he commanded, could harbor such doubts. In fact, though, it is precisely his experience in Imperial service that has turned him solidly against the Empire, and will, I believe, eventually convince him of the necessity of the Alliance. I think you'll agree when I fill in more of his personal history.

Kyle came from Sulon, the moon of Sullust. Like many of our outworld recruits, he came from farmer stock, with a warm, close-knit family background. He adored his father, an agricultural machine salesman and mechanic with personal ties to the rural community he served.

Kyle sought training at the Academy only to better follow in his father's footsteps when he returned home.

At the Academy he discovered a natural gift for cybernetics systems theory and information engineering. The time spent on his studies, extra-curricular martial arts and target-shooting classes left little time to worry about political rumors or changes in curriculum and policy, as the Empire consolidated its hold on the Academy. His quiet student existence was shattered when he received Imperial notification that a Rebel ambush had killed his parents during an Imperial rescue operation. The final blow came when the Academy refused to extend funeral leave.

At the time Kyle had no reason to doubt what was clearly an Imperial cover-up. Overwhelmed by pain and a burning hatred for the Rebels



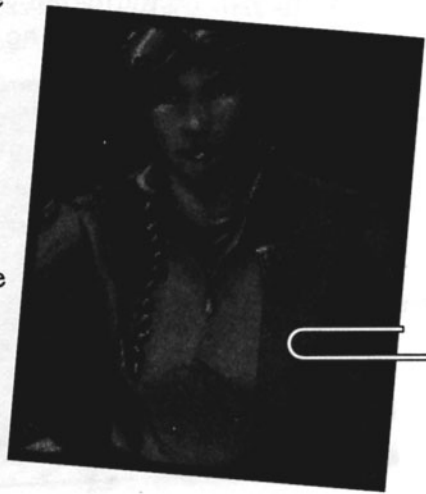
who had supposedly killed his parents, he accepted a commission in the special operations division of the Imperial Army. It was here that he learned the true face of the Empire.

I first came to know him several years later, when I was working as a mole and double agent within the Imperial Intelligence Corps. Repeated contacts with Kyle showed me the scars he hid beneath a veneer of quiet competence, and his growing disillusion with the Army and all it represented. I saw to it that reports detailing the real story of the Imperial raid on Sullust came his way, and our friendship continued to deepen.

When my cover was blown and I was taken prisoner, Kyle ended his service in the Imperial Army by engineering my escape from torture and helping me get off the planet to a Rebel base. He joined me there a few days later on his way to the rim worlds, where, in the company of smugglers and pirates, he was to acquire the further skills of sabotage and subterfuge that have since made him so valuable to our cause.

I knew then, when we said good-bye, that he was not ready for a full commitment to the Alliance. The emotional manipulation he endured at the hands of the Empire has hardened him against causes and made the idealistic, trusting young man into a deadly efficient saboteur whose loyalty must be earned rather than bought.

One thing is certain. He may not totally trust the Alliance, but he will never forgive or forget what the Empire has done to him. Yes, he saved my life and is perhaps the most effective covert agent we have, but it is this hatred of the Empire that will insure his reliability to us. It is sad but true that ongoing Imperial atrocities and disregard for life continue to provide our best hope for recruits. — Jan Ors



GETTING STARTED

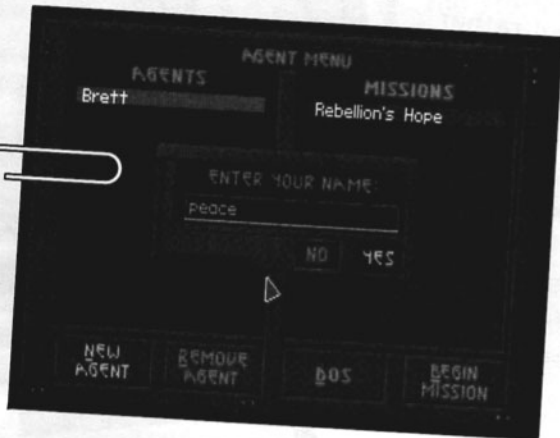
The first tactical display you will see is the Agent Menu screen. If this is your first encounter, you will be presented with a prompt for your agent's name. Your new agent will appear on the left side of the screen. You only need one agent to play, but you can create up to 14 agents by clicking on the **New Agent** button. Later on, when you have established a corps of experienced agents, you may select one by simply clicking on the desired agent. Each agent highlighted will display a list on the right of the missions to which they have thus far been assigned. Completed missions will be indicated with a red marker showing the difficulty setting the mission was completed on

{E= Easy, M= Medium, H= Hard}. If you wish to remove an agent, highlight the agent name and click on the **Remove**

Agent button. To begin play, select a mission from the mission menu on the right side of the Agent Menu screen and click on the **Begin Mission** button. (You may replay any completed mission.) To quit the game click on the **DOS** button.

You will now see the Mission Briefing Screen. This is where your agent gets their information about the mission from their contact within the Rebellion, including the Mission Objectives, the goals you have to accomplish in order to complete the mission. Here you may also set the mission's difficulty by clicking on the **Easy**, **Med**, or **Hard** buttons. If you decide not to accept the mission at this time, click on the **Cancel** button, which will take you back to the Agent Menu screen. On the other hand, if you're set to go, click on **OK**, and get ready to take on the Empire.

6



KEYBOARD

Movement

- = Forward
{up arrow}
- = Rotate Right
{right arrow}
- = Rotate Left
{left arrow}
- = Back
{down arrow}
- = Use
{open / push / pull}
- OR + = Strafe/
Dodge right
- OR + = Strafe/
Dodge left
- = Crouch
or Duck
- = Jump
- = Speed mode
- = Slow Mode
{Cap Locks}

Below are the default controls. User controls may be customized by running the Setup program and selecting **Change Controller Setup** from the Setup Menu. For more information on running Setup consult your reference card.

View

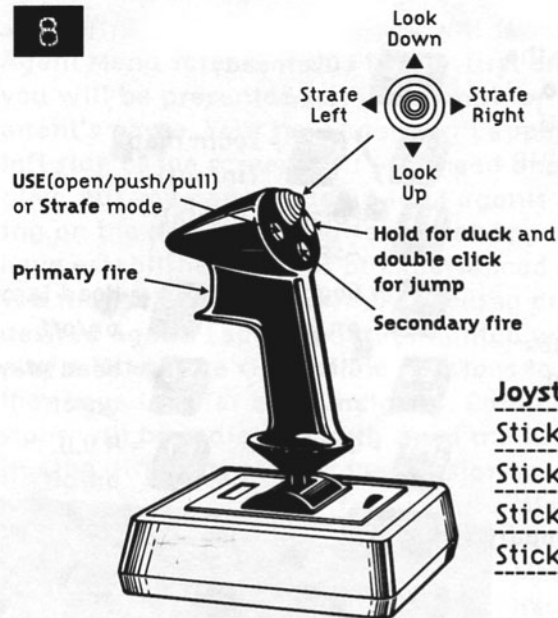
- = Look down
- = Look up
- = Center View
{keypad}

Weapons

- = Primary Fire
- = Secondary Fire
- TO = Select weapon
{0-9}
- = Put weapon
in holster
- / = Cycle through
Weapons
{backwards/forwards}

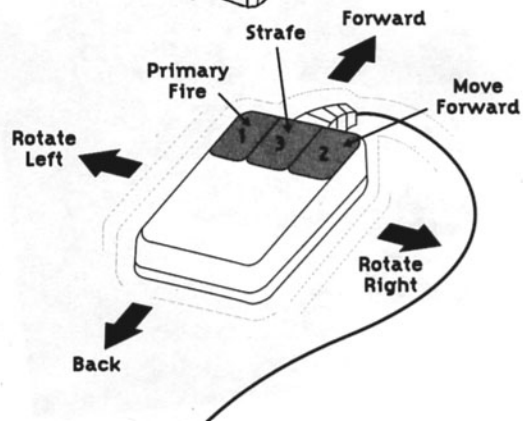
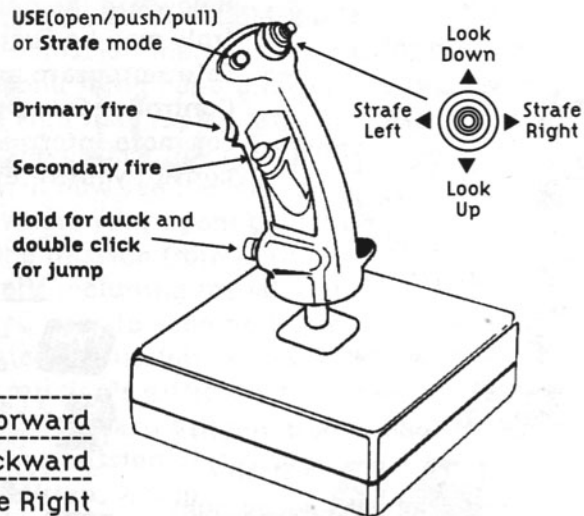
Feature Controls

- = Overhead
Map
- / = Zoom map
{in/out}
- = Personal Digital
Assistant (P.D.A.)
- = Goggles on/off
- = Head lamp on/off
- = Cleats on/off
- = Head Wave on/off
- = Gas Mask on/off
- = H.U.D. on/off
- = Pause
Game
- + OR = Change
screen size
- = Toggle current/
last weapon
- = Toggle automount
on/off



Joystick

Stick forward	Move forward
Stick Back	Move backward
Stick Right	Rotate Right
Stick Left	Rotate Left

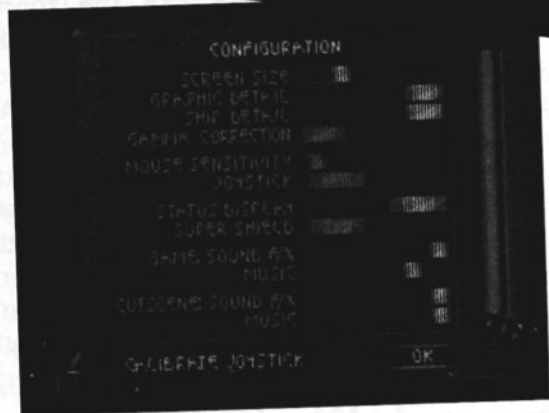


SIMULATION CONTROLS

MAIN MENU

If you need to leave the mission at any time, hit the **ESC** key, which will access the Main Menu. Here you can **Quit to DOS**, **Abort mission** (which will return you to the Agent Menu), go to the **Configuration** screen (see below), or **Return to game**.

The Configuration screen consists of a series of labeled slider bars and switches which allow you to adjust different aspects of software or hardware functionality. These include Screen Size, Graphic Detail, Gamma Correction (adjusts brightness), Ship Detail, Sound F/X Volume, Music Volume, Mouse Sensitivity, Joystick (on/off), Status Display, Super Shield (limited invulnerability) and Calibrate Joystick.



Subject: Your Personal Data Assistant.

...//442618//...We've included in your stores a modular Personal Data Assistant (PDA) for inclusion in your personal onboard system. I know you'll find this an improvement over our old data displays (we've both complained enough about them!).

The new system is a lot easier to use. Just hit **F1** on your keyboard and the display from the PDA will overlay your view screen. You will see five buttons at the bottom which, when clicked, access the five PDA functions (described below).

MAP Displays all territory you have so far explored. The [arrow display] or the arrow keys on your keyboard move you around on the map. The [zoom display] or the + or - keys on your keyboard allow you to zoom in or out for close-up or overhead shots. The [layers display] or left and right square brackets on your keyboard toggle you through the different floors of the building.

10

WEAP (WEAPONS). Displays each weapon you are currently carrying, and the keyboard key that brings it up.

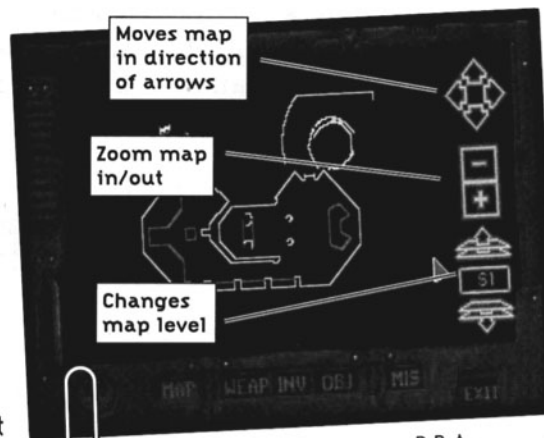
INV (INVENTORY). Displays all non-weapon items in your inventory.

OBJ Displays mission objectives and percent of secret areas found. The "bullets" to the left of each objective are filled in as you complete them. You must complete all objectives before proceeding.

MIS (MISSION). Displays text of your mission briefing. Scroll up and down with up and down arrows...485//24963//4845//9852//...

Subject: The Heads Up Display

The Heads Up Display (or HUD) shows certain vital information you will want to constantly monitor. The two, green arcs on the left side show your shield status with corresponding numerical measurement

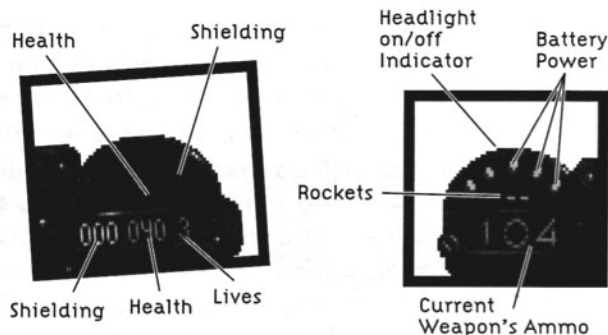


JANORS TO KYLE KATARN

below in green, and the red, oval monitors your vital signs to give you an overall health reading, also with a corresponding numerical value below in red. The red number to the right represents your "lives." (You can get more!)

Each mission has several invisible check points that are automatically logged when passed so that when you die, you will continue where you left off. When a life is lost, continue play by pressing **Space**. If you have lost all your lives, you must replay the mission from the beginning.

The right side of the HUD displays your battery power/ weapons status. The red light at the top is on when your head lamp is on. The green dots across the top are the battery power indicator. The large, red number displays either your power units (the equivalent of ammunition) for pistol/rifle type weapons, or the number of actual units in the case of grenades or mines (timed floor explosives). Certain accessories (such as light goggles) will cause a drain on your battery power, so use them sparingly. The smaller green number represents the number of rockets for your rocket launcher, and only appears when you use this weapon...///+65844//465//98448512...



Subject: Enemies

Here is the latest data on opponents you may run into at various Imperial installations. Some, such as stormtroopers, you are obviously familiar with, but the updated information may still help you out of a tight scrape. Obviously there will be a few things out there that we don't have data on yet. And, I don't have to remind you that if you disable an enemy, their weapon may be added to your personal arsenal.

CODED TRANSMISSIONS FROM

IMPERIAL TROOPS

Stormtroopers. You know them, you hate them. The assault soldiers of Imperial power. They're not overly clever, they're armed with only a standard issue laser rifle, but they're fanatically loyal, doggedly persistent, and the Empire seems to have an endless supply of them.

Imperial Officers. The average Imperial Officer prides himself on not stooping to carrying a melee weapon, but, as you well know, their accuracy with the pistol more than compensates for this.

Imperial Commandos. These are, of course, drawn from the Officer corps, and so have the same aversion to melee weapons. Their laser rifles give them a longer range of fire than the average Officer, and their intensive physical training means they can generally move faster as well.



Stormtrooper



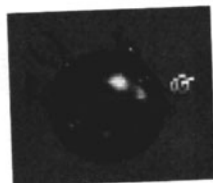
Imperial Officer



Imperial Commando



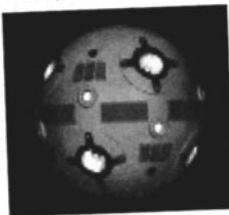
Probe Droid



Interrogation Droid



Gun Turret



Remote

MECHANICALS

Gun Turrets. Stationary, but capable of firing high-powered laser bolts in a complete circle.

Probe Droids. Do not be taken in by the slow floating movements of these nasty pieces of Imperial technology—their laser blasts pack as much punch as the standard rifle. These babies go out with a bang when disabled, so keep your distance when finishing them off.

Interrogation Droids. The more deadly "cousin" of the probe droid. This comes equipped not only with a stun device for "target motivation," but with a power blast for escape-minded prisoners.

Remotes. These small droids carry a relatively mild laser blast, but their speed, both in straight-out acceleration and direction change, is considerable. They're mostly a painful annoyance.

JANORS TO KYLE KATARN

OTHERS

Trandoshans. These reptilian bounty hunters have been known to do the occasional odd job for Darth Vader in the past. Knowing Vader's obsession with efficiency, Bossk's continued existence probably means he's very good at what he does. His usual preference in weapons is a concussion rifle.

Gran. These scoundrels have long been attached to the court of the infamous crime boss Jabba the Hutt. You can't miss them—they've got three eyes. They're skillful hand-to-hand fighters, but first you have to get past the thermal detonators they usually have up their sleeves.

Gamorrean guards. These pig-like creatures are incredibly tough and skillful with primitive weaponry (like the axes they usually carry). Nothing a blaster or laser rifle can't handle. Just don't let them get too close.

Dianoga (sewer creatures). Long thought to be figments of the imagination of drunken maintenance workers, these all-too-real predators strike swiftly from below the surface at anything that moves, so, if you're lucky enough to spot one before it sees you, stay well back and shoot fast. It also can swim submerged and come up in your face, so keep your wits about you. Remember that your shielding can't help with the dianoga!

Boba Fett. We've both run into this joker before. His skill as a bounty hunter is legendary, as is his ruthlessness and knack for escaping tight situations. He's fast on his feet, and his jet pack adds to his mobility.

ENVIRONMENTAL HAZARDS

As you know these missions can take an agent into areas most folks wouldn't go near. If it looks dangerous or deadly, it probably is. The best strategy in most



Bossk
(a Trandoshan)

Ree-Yees
(a Gran)



Sewer
creature
(dianoga)



Gamorrean
guard



Boba Fett

CODED TRANSMISSIONS FROM

of these situations is strict avoidance. Remember, that all the shielding in the galaxy won't protect you from a bad fall or a close encounter with some industrial machinery. Here's a few things to watch for:

QS100 Welding Arms. Though not designed as weapons, these tools can be extremely dangerous, so try to keep your distance.

Mines. Pretty straightforward. You get too near them and they explode. Just keep your eyes open and watch the floor.

Chemical Gas (not pictured). The Empire is not known for its responsible handling of industrial waste. They tend to handle these hazards by simply storing gas masks somewhere in the vicinity. The trick is finding a mask.

Chemical Storage (not pictured). Once again the Empire tends to have a surplus of industrial waste. A mask won't help you here, though.

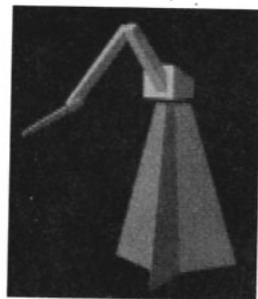
Power Generating Units (P.G.U.). Keep an eye out for these during a fire fight. A stray laser can have a devastating effect (and can therefore work for or against you). These P.G.U. are often left around starship maintenance facilities.



Mines



Power
Generating
Units



QS100
Welding Arm

Subject: Weapons And Other Useful Items

You know as well as I do that the Rebellion is low on resources and most of these go straight to the front, so on this type of operation we have to scrounge what we can from the Empire. It helps, though, to know what to look for. Weapons (and the units that power them) are obvious assets, but there are other objects you might want to grab if you get the chance.

WEAPONS

Overview: In general all weapons fire primarily with the **Ctrl** key, however some weapons may have a secondary fire operated by the **Z** key.

JANORS TO KYLE KATARN

Hand to Hand {1 key} (not pictured). I assume you're already familiar with how this works. The good thing about a left hook is that it comes with unlimited ammo. (At least as long as you're still alive!)

Modified Bryar Pistol {2 key}. Compared to many Imperial weapons, the blaster is slow, since it's a single fire weapon. It makes up for this lack in a high degree of accuracy and a much stronger and more efficient single blast. Though, as with any laser weapon, its impact does diminish over distance. AMMO: Energy unit {1 UNIT PER FIRE}

Stormtrooper Laser Rifle {3 key}. You've been on both ends of these babies often enough, so you should know the specs. Faster than the blaster, but less accurate and more than a bit spendy on the ammo. The rifle also has the same tendency to lose strength over distance. AMMO: Energy unit {2 UNITS PER FIRE}

Thermal Detonator {4 key}. This grenade-type weapon has two modes of detonation—the primary {CTRL key} mode explodes on impact, while the secondary mode {Z key} has a 3 second delay. The longer you hold down your firing key, the farther you will throw the detonator.

Imperial Repeater Gun {5 key}. The primary mode of a rapid-fire weapon {CTRL key} delivers one shot per fire, while the secondary mode {Z key} delivers a cluster of three. AMMO: Power cells {1 CELL PER FIRE, PRIMARY; 3 CELLS PER FIRE, SECONDARY}

Jeron Fusion Cutter {6 key}. The fusion cutter is a construction tool, but can be used as a weapon in a pinch. The primary mode of operation {CTRL key} fires one barrel a time in straight, 3-shot bursts, while the secondary mode {Z key} fires all 4 barrels at once with a cone-shaped trajectory. AMMO: Power cells {1 CELL PER FIRE, PRIMARY; 8 CELLS PER FIRE, SECONDARY}

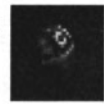
I.M. Mines {7 key}. The primary mode {CTRL key} has a 3 second



Modified Bryar Pistol (Blaster)



Stormtrooper Laser Rifle



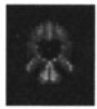
Thermal Detonator



Jeron Fusion Cutter

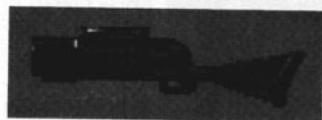


Imperial Repeater



I.M. Mines

delay until detonation, so drop it and get out of the way fast! The secondary mode (Z key) is a proximity trigger with a motion sensor. It has a 1 second delay after placement before it is armed, but then immediately detonates when there is a moving object in its activation radius. Needless to say, you don't want to hang around after these are placed.



Packered Mortar Gun



Stouker Concussion Rifle

ing object in its activation radius. Needless to say, you don't want to hang around after these are placed.

Packered Mortar Gun

(8 key). The mortar gun lobbs shells that explode on impact. AMMO: Shells (1 SHELL PER FIRE)

Stouker Concussion Rifle

(9 key). Fires compressed

bullets of ionized air that explode in shock waves. AMMO: Power cells (4 CELLS PER FIRE)

Shielding. We're listing this under weapons because its primary use is in battle. The shield we have provided you acts as protection against

energy-based weapons. It doesn't protect against direct physical assaults (a punch to the jaw, for instance) or falling from heights.

AMMO: Shield units.

OTHER ITEMS

ITEM	USE
Key	Opens doors
Head lamp	Personal lighting (req. battery)
Infra-red goggles	Illuminates heat (req. battery)
Ice Cleats	Traction on ice
Air Mask	Filters contaminated air (req. battery)
Battery	Powers headlight, airmask, and infra-red goggles
Shield units	Powers personal shield
Energy units	Ammo for various weapons (see WEAPONS above)

CODED MESSAGE: KYLE KATARN TO JAN ORS

...///051532065///13265031///1511616//168616//6546546///.....//61164///...//6549871/...You asked me for a few tips for training Alliance information recovery agents, and here's what I came up with...

1. Fighting your way through Imperial installations can be disorienting as well as dangerous. Consult your mission briefings to refresh your memory and compare your surroundings to your map to make sure you're not doubling back.

2. Examine your surroundings carefully. Relatively subtle changes in wall texture or indentations or extrusions may indicate a door to a secret room. Treat suspected doors as you would a regular door. **[SPACE bar]**

3. Combat situations aren't the only place where ducking or crouching are useful. You can sometimes use this for low passages or partially raised gates as well.

4. When cornered by Imperial forces, don't forget the possibility of windows as a quick exit.

5. Speaking of quick exits, many Imperial buildings have low walls along the edge of balconies that can be jumped, as well as

Power cells



Ammo for various weapons (see WEAPONS above)

Shells



Ammo for Mortar Gun

Med kit



Health boost

BONUS POWER UPS

POWER UP

EFFECT

Shield Supercharge



Invincible shielding

Revive



Full charge health & shield

Weapon Supercharge



Doubles weapon fire rate

Life



One {1} extra life

CODED MESSAGE: KYLE KATARN TO JAN ORS

ledges that can be jumped onto and then traveled. It doesn't hurt to look down and make sure where you're putting your feet.

6. Acquire as much ammo as possible, but if you find yourself running low, look for secret ammo rooms or switch to another gun that uses different ammo. (Your blaster is always a reliable backup.)

7. Shield and health packs also need to be stockpiled, and these, too, may be found in secret rooms. If you notice you're running low, don't run into a new area until you've stocked up.

8. For some reason, new agents seem to forget the possibility that enemies above or below you can be picked off by shooting up or down. Explosives often work well here.

9. Explosives can be occasionally used to take out walls or other barriers. It's certainly worth trying if you have a decent supply of explosives and your objective seems blocked.

10. A few combat and movement tips. Some of these may seem obvious, but the obvious is easy to forget in a firefight.

a. Don't let foolish courage prevent you from running away from a fight if your health is running low. The point is to achieve your objective and get home alive.

b. Running (Shift key) can also help you effect a longer jump. Keep running until the last moment, then jump.

c. Crouching or staying in dark areas when your enemy is in the light can throw off their aim. Bear in mind that keeping your head light on eliminates your darkness advantage.

Well, that's about it. I'm sure you'll develop your own strategies. Remember to rely on your brain before your blaster.

— Kyle Katarn

Credits

Project Leader = Daron Stinnett
Lead Artist = Justin Chin
3D Engine = Ray Gresko
Story = Justin Chin
Programming = Daron Stinnett, Ray Gresko
and Winston Wolff
Game Design = The Dark Forces Team with
Special Thanks to Justin Chin
Level Design = Ingar Shu, Jim Current,
Matt Tateishi and Brett Tosti
Tools = Winston Wolff
Texture Placement = Aaron Muszalski and Chris Ross
Texture Artwork = Chris Hockabout, Patrick Sirk
and Tom Payne
3D Artwork = Ralph Gerth IV, Scott Baker,
David Vallone, Ron Lussier
and Bill Stoneham
2D Cutscene Artwork = Justin Chin, Jon Knoles
and Paul Mica
Art Technician = Aaron Muszalski
Video Effects = Michael Levine, C. Andrew Nelson
and Mark Christiansen
Animations = Leonard Robel and Gordon Baker
Additional Art Design = Paul Mica
IMUSE™ Interactive Music System = Michael Land, Peter McConnell,
Michael McMahon and Justin Graham
Music and Orchestration = Clint Bajakian
Digital Sound Effects = Clint Bajakian
Voice Directing and Editing = Khris Brown
Voice Producer = Tamlynn Barra
Kyle Katarn, Imperial V/O = Nick Jameson
Jan Ors = Julie Eccles
Rom Mohc = Jack Angel
Mon Mothma = Peggy Roberts-Hope

Stormtrooper, Dying Rebel
and Narrator = Denny Delk
Darth Vader = Scott Lawrence
Install Utility = Gary Brubaker
Landru System Developed By = Edward Kilham
Executive Producer = Steve Dauterman
Project Coordination = Dan Connors
Lead Tester = Brett Tosti
Testers = Chris Snyder, Chris Purvis, Leyton
Chew, Reed Derleth, Darren Johnson, William W. Burns, Al Chen, John
Hannon, Dana Fong, Brian Kemp and Sean Matheis
Compatibility Testing = Doyle Gilstrap and Chip Hinnenberg
Quality Assurance Supervisor = Mark Cartwright
Product Marketing Manager = Barbara Gleason
Public Relations = Sue Seserman & Camela Boswell
Package Design = Jon Knoles, Justin Chin
and Terri Soo Hoo
Package Cover Art (front) = Ron Lussier
Package Cover Art (back) = David Vallone
CD-ROM disc Art = David Vallone
Manual Written by = Jo "Captain Tripps" Ashburn
and Mark Cartwright
Manual Design = Shepard Associates
Product Support = Mara Kaehn (Manager)
Jason Deadrich, Tabitha Tosti and the Product Support Team
Key Accounts Manager = Meredith Cahill
Manufacturing Manager = Jason Horstman
International Manager = Lisa Star
Additional Programming = Mark Haigh-Hutchinson
Special Thanks = Wayne Cline, Donald Bies,
Stacy A. Mollenma, Julia Russo, Howard Roffman and Lucasfilm Ltd.
Original Music Score = John Williams
Very Special Thanks to = George Lucas
Kalani Streicher

Important Numbers

ANY QUESTIONS?

Call our Technical Support line at:

415-507-4545

When you call please be sitting in front of your computer with paper and pen, and gather as much pertinent information about your computer as you can assemble: make, model, peripherals, RAM and disk size, graphics card, monitor and the information in your **CONFIG.SYS** and **AUTOEXEC.BAT** files. You can also write to Technical Support at:

LucasArts Entertainment Co.

P.O. Box 10307, San Rafael, CA 94912

Product Support hours are 8:30 am to 6:00 pm Pacific Standard Time, Monday-Thursday; 8:30 am to 5:00 pm Pacific Standard Time, Friday.

Technical Support FAX:

415-721-3482

Starting October 1, 1995, please call 415-507-0300

Technical Support BBS:

415-257-3070

Starting October 1, 1995, please call 415-507-0400

NEED MORE HINTS?

Please do not call Technical Product Support for HINTS, as they do not give hints over the phone. However, you may call our 24-hour automated hint line at:

1-900-740-JEDI

(1-900-740-5334)

This service costs 75¢ a minute, and you must be over 18 years old or have your parents' permission to call.

WOULD YOU LIKE TO ORDER GAMES, HINT BOOKS AND OTHER NEAT STUFF THROUGH THE MAIL?

1-800-STAR WARS

(1-800-782-7927) United States

1-415-721-3394 International ♦ 1-800-828-7927 Canada
or FAX: 415-456-4381 United States and International

WHERE TO FIND US ONLINE

CompuServe

Game Publishers Forum A
(GO GAMAPUB)
section 7
Or send e-mail to ID#
75300,454

America Online

Keyword "LucasArts"
Or send e-mail to LUCASARTS3
Internet E-Mail
75300.454@compuserve.com
Or send e-mail to
LucasArts3@aol.com