

# Kirby's Adventure

1 Controls

2 Getting Started

3 Basic Play


4 Game Screen

5 Copying Abilities








6 Items

7 Saving and Deleting

## Basic Controls

Move/Menu navigation	
Jump/Confirm	<b>A</b>
Inhale/Use copied ability	<b>B</b>
Start game/View game help screen	START
Discard copied ability	SELECT

## Other

Walk	
Run	Double tap and then hold  to run. Let go to stop running. Press  in the opposite direction while running to skid to a halt.
Crouch	Press and hold  to crouch.
Inflate	Press  to inflate, and then again to rise into the air.
Jump	Press <b>A</b> to jump. Press it while running to jump even further.
Inhale	Press <b>B</b> to inhale an enemy or object.
Enter doorway	Press  in front of a doorway to enter it.
Use ladder	Press  when next to a ladder to ascend or descend it.
Slide attack	Press <b>A</b> or <b>B</b> while crouching to perform a slide attack.

## Further Controls

Exhale	Press <b>B</b> after inhaling an enemy, block or star to fire out a star. You can use this to destroy enemies or blocks.
Swallow	Press <b>+</b> to swallow an inhaled enemy and copy their ability. Different enemies have different abilities, or some have none at all.

## Mid-Air Controls

Float	Tap <b>A</b> repeatedly while in the air to float.
Mid-air attack	Press <b>B</b> while in the air to fire out an air pellet. However, doing this will cause Kirby to deflate and he will come back down to the ground with a thud!

## Underwater Controls

Swim	Press <b>A</b> + <b>+</b> while underwater to swim.
Water gun	Press <b>B</b> while underwater to squirt water and take down enemies.

## 2

## Getting Started

Press START on the title screen to open the file selection screen. To start a new game select an empty file and press START to proceed to the level 1 map screen.

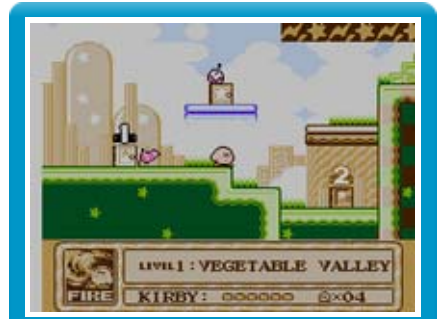


### ● Map and Stage Information

There are numerous doors on the map screen which will take you through to the individual stages of that level. After clearing a stage the map screen will grow larger and reveal new doors to enter through.

Defeat the boss lying in wait on the final stage of each

level and grab the Star Rod piece to proceed on to the next. You must defeat all eight bosses to clear the game!



Map Screen



Stage Screen

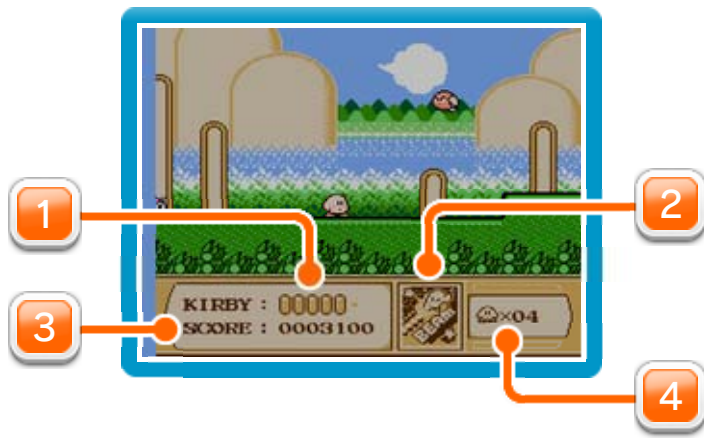
### ● Losing Lives

Your health meter will deplete if you are hit by an enemy or enemy attack. If your health meter depletes completely or you fall off of the screen, you will lose a life. Lose all of your lives and it will be game over.

On the game over screen select CONTINUE to restart the current stage, or select GAME END to return to the title screen.



Game Over Screen



1 Health meter

2 Current copied ability

3 Score

4 Remaining lives

Press **B** to use an ability copied from a swallowed enemy. There are lots of different abilities to copy in the game so have a look and see what you can find!



There are some enemies in the game which will not grant you any special ability.

- ◆ You cannot inhale an enemy while you have an active copied ability.

### ● Discarding Copied Abilities

You will lose your copied ability if you are hit by an enemy or enemy attack, or you can manually discard it



by pressing SELECT. However, you can regain the ability by inhaling and swallowing the star that appears after you have done this.



### Maxim Tomato

Fully restores your health meter.



### Candy

Makes you invincible for a short time.



### 1UP

Grants you an extra life.



### Warp Star

Transports you to a different location.



Your game will save automatically whenever you exit a stage. You can load your progress on the file selection screen to resume play from the saved state, but please note that your remaining lives, health meter, copied ability and score will not be recorded.

To delete a saved game, select **DELETE SAVED GAME** on the file selection screen and choose the file you wish to delete. **Data cannot be recovered once deleted, so please be careful.**