

---

FIELD MANUAL

D E L T A  
F O R C E



---

HEADQUARTERS, DEPARTMENT OF THE ARMY

# TABLE OF CONTENTS

---

Intro .....	2
Install .....	3
Settings .....	5
Gear .....	8
Game Controls .....	10
Keyboard Layout .....	12
Game Screen .....	14
Single Player Missions.....	16
Multiplayer Games.....	17
Credits .....	20
Technical Support .....	22
Legalese .....	23

---

HEADQUARTERS, DEPARTMENT OF THE ARMY  
OCTOBER 1977

In October of 1977, the 1st Special Forces Operational Detachment-DELTA was secretly formed to deal with the growing threat of world terrorism. At Fort Bragg, elite Delta Force operatives, recruited mainly from the 82nd Airborne, Special Forces Green Berets and U.S. Army Rangers, rigorously train in hostage rescues, specialized reconnaissance and other counter terrorism techniques. Highly skilled in CQB (Close Quarters Battle), armed with the best equipment, and able to infiltrate as civilians, Delta Force is ready to deal with the most dangerous world threats.

Due to the extremely sensitive nature of these low-visibility missions, the U.S. Department of Defense still does not officially acknowledge the existence of Delta Force.

## **INSTALLING DELTA FORCE**

---

The AutoRun program will automatically load itself and run each time you insert the **Delta Force CD** into your CD-ROM drive. **Delta Force** uses an Install Wizard to place the necessary files on your hard drive. Before you begin installing the game, close all programs that your computer may be currently running.

- 1)** Place the game CD into your CD-ROM drive and close the drive door. The AutoRun program will now take over. If you have turned off the AutoRun feature or if the **AutoRun** fails to launch automatically, double-click on the “My Computer” icon on your desktop and then double-click on your computer’s CD-ROM drive letter. This should launch the Delta Force AutoRun.
- 2)** Click the mouse on one of the menu choices, or type the letter corresponding to the underlined hot key.
- 3)** At the beginning of the installation program you are given the opportunity to select a destination folder for the game. A default is typed in the window for you. Press the Enter key to select the default destination. Otherwise, select your own folder name. If the folder you specify does not already exist on your hard drive, the Install program will create it for you. Further installation instructions will appear on-screen.

- 4) If there is enough free hard drive space at the destination site, the program will copy the files from your **Delta Force CD-ROM**. An on-screen progress meter displays the completion percentage as the program transfers the files.
- 5) The install procedure automatically adds a NovaLogic folder to your Windows® Start Menu under the Programs heading. The **Delta Force** sub-folder within the NovaLogic folder contains an application short-cut icon for the game. The install also places a **Delta Force** shortcut icon on your desktop.
- 6) If your system does not already have DirectX installed, you will need to install it now. Select Install DirectX from the AutoRun program, then follow the on-screen instructions. You will need to restart your computer to activate DirectX before you can play **Delta Force**.

To start **Delta Force**, double-click on the **Delta Force** shortcut. You can also go to the program's directory or Start Menu and double-click on the **Delta Force** program icon.

## GAME SETTINGS

The Settings screen allows you to reconfigure several elements of game play.



### GENERAL SETTINGS

#### Mouse Sensitivity:

Increases how responsive your mouse is.

#### Flip Mouse:

Reverses Look Up/Look Down movement on the mouse controls.

#### Colors:

Choose between 256 color (for faster video) or 16 million (for True Color.) A Pentium II is recommended for 16 million colors.

#### Turbo:

Turning turbo “on” will increase the frame rate of the game at the expense of a slight degradation in terrain detail. If your screen seems like it is having trouble keeping up with game, you should use this setting.

**Resolution:**

Select from 320 x 240 to 800 x 600. A Pentium II is required for 800 x 600.

**Windowed:**

Play the game in either a Window on your desktop or full-screen.

**SFX Volume:**

Sets the volume level of game sound FX. Paying close attention to the subtle sounds around you is a vital survival skill of a Delta Force soldier.

**Music Volume:**

Sets the volume level of the music in the menus.

**Dialogue Volume:**

Sets the volume of voices in the game.

**DIFFICULTY SETTINGS**

**Enemy AI:**

Select "Hard" to make the enemy use more complex tactics.

**Player Health:**

Select "Easy" to show a health bar which will allow you to take multiple hits.

**Squad Members:**

Select "Off" if you want to brave a mission on your own.

**Tracers:**

Select "Off" if you don't want to see the bullet trails from fired weapons.

### **Friendly Fire Warning:**

Select “Off” to remove the Red safety **X** that appears when you target your team members.

### **Power Ups:**

Select this option to have extra crates of ammo, grenades and First Aid supplies in a mission.

### **GPS Icons:**

By “Default”, each mission shows icons for certain enemies on the GPS Map. You can select to “Show Friendly” to see only your team mates or “Show Everthing” to see all enemies in a mission.

## **REMAP KEYBOARD**

This screen allows you to reconfigure what action the keys and mouse will control. Select the command with your mouse and follow the instructions on the right side of the screen.

## **MESSAGE MACROS**

To effectively communicate with fellow players, you can pre-set messages with the Macro Keys. During the game press the **T** key to talk, hit a function key then hit return and the preset text will be sent.

**F1** The package is secure.

**F2** Prepare to assault on my mark.

**F3** Snipers take the high ground.

**F4** Gunners go for the flags.

**F5** Guard the base.

**F6** I need backup now!

**F7** Mess with the best, Die like the rest!

**F8** You don't want none of this!

**F9** Is that all you got!

**F10** Son, It's gonna be a long day!



## GEAR CHOICES

---

### PRIMARY WEAPONS

Delta Force Operatives are outfitted with the best weapons to get the job done.



**MODE 1**  
Key 3:  
Burst M4

**MODE 2**  
Key 4:  
M203

**MODE 3**  
Key 5:  
Single shot

#### **M4 5.56mm Carbine**

*and attached M203 40mm Grenade Launcher with 4x Scope, 30 round magazine, 18 grenades.*

Standard issue general purpose assault rifle.



**MODE 1**  
Key 3:  
Full Auto

**MODE 2**  
Key 4:  
Burst

**MODE 3**  
Key 5:  
Single shot

#### **Heckler & Koch 9mm MP5 submachine gun**

*with integral suppressor and 30 round magazine.*

This short-range weapon is geared for close quarter's battle.



**MODE 1**  
Key 3:  
Semi auto

**MODE 2**  
Key 4:  
Full auto

#### **M249 SAW (Squad Automatic Weapon)**

*with 200 rounds per box.*

Light machine gun for high firepower infantry support.



#### **Remington 7.62mm M40A1 sniper rifle**

*with 8x Scope and 5 round magazine.*

Precision shooting at great range for sniper missions.



#### **Barrett Light .50 caliber sniper rifle**

*with 8x Scope and 10 round magazine.*

Heavy yet powerful for ranged penetration sniper missions.

## SECONDARY WEAPONS



### 2 Satchel charges

*with radio detonator.*

#### MODES:

**KEY 6** – Place satchel

**KEY 7** – Use radio detonator



### 2 M18 Claymores

*with motion sensors and "Clacker" (Remote firing device).*

#### MODES:

**KEY 6** – Motion Sensor Claymore

**KEY 7** – Radio detonator Claymore

**KEY 8** – Use radio detonator



### 2 LAWs (Light Antitank Weapon)

*One shot portable anti-armor rocket launcher.*



### Double Ammo Load

*For primary weapon.*

## SIDEARMS



### Special Operations .45 Pistol

*7 round magazine.*

Reliable standard issue sidearm.



### High Standard .22 Pistol

*9 round magazine.*

Virtually silent, high accuracy pistol for up-close and quiet takedowns.

## STANDARD GEAR



### 6 Fragmentation Grenades



### Laser Designator

*For designating targets for artillery strikes.*



### Ka-Bar Knife

# GAME CONTROLS

---

## Mouse Controls

Look up/down, turn left/right (Full Screen Mode only)

- **Left Mouse Button** Fire Weapon
- **Right Mouse Button** Toggle Scope
- **Middle Mouse Button** (if available) Cycle Weapons

**Arrow Keys** Move forward/backward, Strafe left/right

<b>Shift+Arrows</b>	Walk	<b>Control</b>	Fire Weapon
<b>Space bar</b>	Jump	<b>S</b>	Toggle Scope*
<b>Delete</b>	Stand	<b>Back space</b>	Cycle Weapons
<b>End</b>	Crouch		
<b>Page Down</b>	Lie Prone	<b>1</b>	Knife
<b>B</b>	Binocular Mode	<b>2</b>	Sidearm
<b>C</b>	Command Map	<b>3</b>	Primary Weapon Mode 1
<b>D</b>	Drop Items (excluding weapons)	<b>4</b>	Primary Weapon Mode 2*
<b>G</b>	Mission Goals	<b>5</b>	Primary Weapon Mode 3*
<b>M</b>	Change Magazine (Discards remaining ammo in current magazine)	<b>6</b>	Secondary Weapon Mode 1
		<b>7</b>	Secondary Weapon Mode 2*
		<b>8</b>	Secondary Weapon Mode 3*
<b>O</b>	Mission Orders	<b>9</b>	Fragmentation Grenade
<b>R</b>	Recents Messages	<b>0</b>	Laser Designator
<b>T</b>	Talk		
<b>Y</b>	Team Talk		

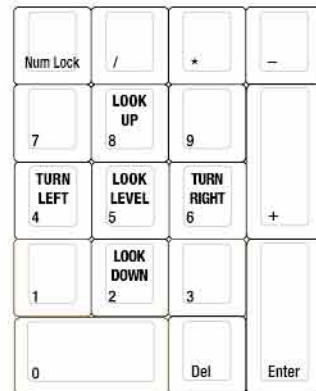
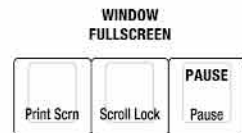
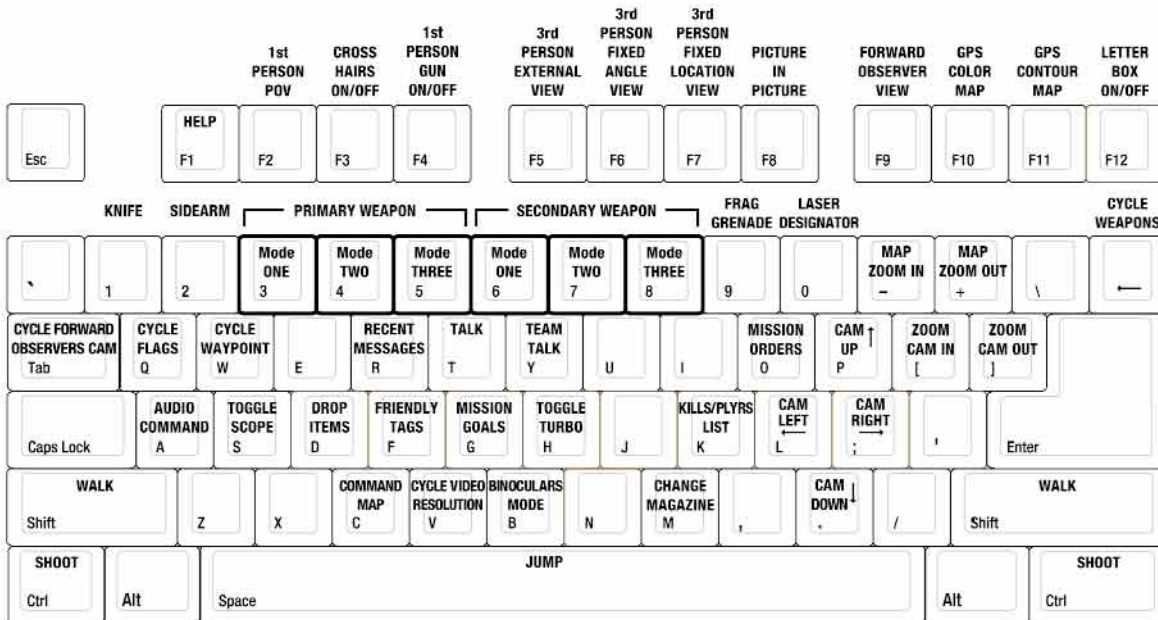
\*If applicable to current weapon

## **IEWS AND GENERAL GAME CONTROLS**

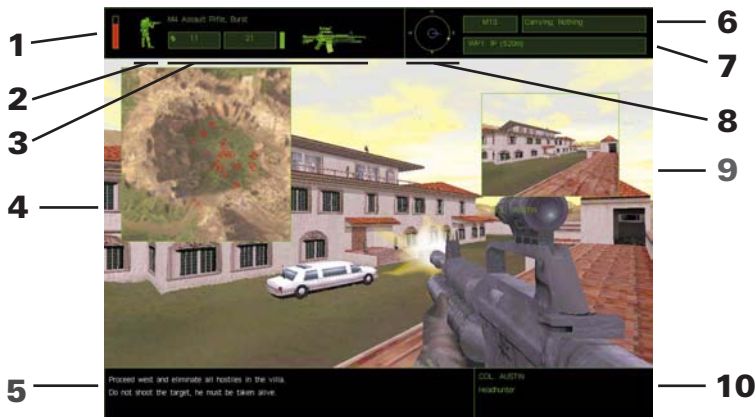
---

<b>F1</b>	Help	.	Track Cam down
<b>F2</b>	First Person POV	<b>L</b>	Track Cam left
<b>F3</b>	Cross-hairs on/off	;	Track Cam right
<b>F4</b>	First Person Gun on/off	[	Zoom Cam in
<b>F5</b>	External View (3rd person)	<b>P</b>	Track Cam up
<b>F6</b>	Fixed Angle View (3rd person)	]	Zoom Cam out
<b>F7</b>	Fixed Location View (3rd person)	-	Zoom Map in
<b>F8</b>	Picture in Picture	=	Zoom Map out
<b>F9</b>	Forward Observer View	<b>Tab</b>	Cycle Forward Observer Cameras
<b>F10</b>	GPS Color Map	<b>Q</b>	Cycle Enemy Flags
<b>F11</b>	GPS Contour Map	<b>W</b>	Cycle Waypoints
<b>F12</b>	Letter Box on/off	<b>V</b>	Cycle Video Resolution
<b>Keypad 2</b>	Look down	<b>Scroll lock</b>	Toggle Windows/Full Screen mode
<b>Keypad 4</b>	Turn left	<b>Home</b>	Multiplayer Host screen
<b>Keypad 5</b>	Look level	<b>F</b>	Friendly Tags on/off
<b>Keypad 6</b>	Turn right	<b>H</b>	Toggle Turbo on/off
<b>Keypad 8</b>	Look up	<b>K</b>	Multiplayer kill/Players list
<b>Pause</b>	Pause Game	<b>A</b>	Play Audio Command

# KEYBOARD LAYOUT



# GAME SCREEN



## 1. Health Bar

If you have the Player Health Setting on "Easy", your current health will be represented by this bar.

## 2. Situational Icon

A profile of your soldier appears at the top of the screen to help quickly identify your body position.



Stand

Crouch

Lie Prone

## 3. Current Weapon Selected

This section displays the weapon that you are holding, the firing mode that it is in, the number of magazines, and number of rounds you have remaining in the current magazine. The box to the right of the magazines is filled in when you have a round in the chamber.

## 4. GPS Map

Press F9 (color map) or F10 (contour map) to bring up your Global Positioning Satellite overhead map.

## 5. Information Link

Important information, such as current mission orders and status of your squad, will be transmitted over your radio. Text sent from other players in a multiplayer game will appear here as well.

## 6. Grid Coordinates/Items

The left hand box shows your current grid location as seen on your Command Map (C key). Any mission item you pick up is listed in the right hand box. Drop this item by pressing the D key.

## 7. Waypoint Indicator

This box indicates the code name and distance in meters to your next waypoint (a predetermined location given to you during the mission briefing).

## 8. Compass Heading

The dial indicates the cardinal direction that you are currently facing. The color of the center dot represents your team side. The direction of your next waypoint is connoted by a green dot.









## 9. Forward Observer Camera

Press F9 to bring up your Forward Observer view. You can cycle through your view and that of your teammates with the TAB key.

## 10. Mission Information

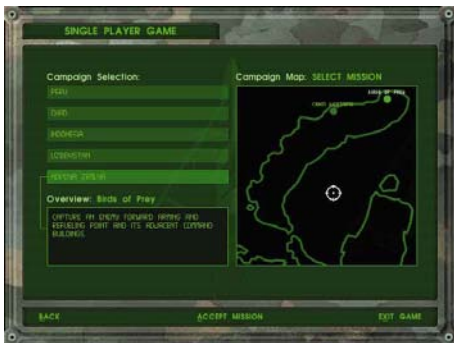
This area details the name of your Delta Force Operative, the current mission and a mission timer (if appropriate to the mission type).

## Global Positioning Satellite Map (GPS)

- |   |                                     |   |                                      |
|---|-------------------------------------|---|--------------------------------------|
|  | Initial/Final<br>waypoint           |  | Building                             |
|  | Waypoints<br>(next waypoint blinks) |  | Vehicles                             |
|  | Teammates with<br>facing indicator  |  | Red team flag<br>(Capture the Flag)  |
|  | Enemies with<br>facing indicator    |  | Blue team flag<br>(Capture the Flag) |



## SINGLE PLAYER MISSIONS



Click Single Player Game to view the Campaign Selection screen. From here you can choose to play any of the five campaigns. After you have completed a campaign mission, you will be able to replay it at any time by selecting it in the right hand box. Click Accept to begin your mission.

### TIPS FOR SUCCEEDING AS A DELTA FORCE OPERATIVE

- Focus on your objective.
- Trying to kill every sentry you see can get you killed.
- Be patient. Shoot only when you have a clean shot, otherwise you will give away your position too early.
- Don't shoot your squadmates, you'll need them.



## MULTIPLAYER GAMES

---

**NovaWorld:** NovaWorld servers support large multiplayer games with dozens of players. NovaWorld can be accessed through your Internet browser by selecting Default Browser. Select Mini Browser in the Connect Via box if your web browser can not connect to NovaWorld (for example certain versions of AOL do not support NovaWorld). Although less functional than most browsers, the mini-browser's small size and single purpose dedication allows it to load quicker than other browsers. You must use the Mini Browser if you have set your browser so that it won't accept "cookies". NovaLogic is dedicated to periodically updating NovaWorld with new features and enhancements. Every time you log onto NovaWorld, it will automatically check to see if you have the latest software and prepare an update, if needed.

**Internet:** Smaller multiplayer games can be hosted over the Internet apart from NovaWorld. Select Host to start a game from your computer. If you wish to find a game, you must first type in the IP Address of the host's computer in the Internet Address box, then hit Search to find the game. You will need to type in the correct password if the Host has opted to password protect the game.

**LAN (IPX):** Several players can simultaneously play over a LAN/IPX network. You will need to type in the correct password if the Host has opted to password protect the game. Only one player is required to have a CD per game.

**Serial:** You can play **Delta Force** against a single human opponent by using a Serial Cable (commonly referred to as a "null-modem cable") to direct connect your two computers. You will need to tell the program which Com Port you will be using. Only one player is required to have a CD per game.

**Modem:** Two players can play **Delta Force** over a Modem connection. If you wish to host the game, simply press the Host button to go to the next screen. Your computer will then wait for the other player to call in. If you intend to join a game on someone else's computer, type in the phone number of the host in the Phone # box, then press Join. Only one player is required to have a CD per game.

# MULTIPLAYER GAME TYPES

## Cooperative

In this game, you replay Single Player missions where your computer-controlled squadmates are replaced with human players. Most Delta Force training at Fort Bragg involves working with a team to overcome simulated terrorist attacks. Play the same scenario multiple times to see how different team strategies work. Note that you can play any mission as cooperative regardless of whether you have gotten to it in single player mode or not. However, in cooperative play the mission will be harder than the single player version to compensate for additional human players. Generally this means an increase in the number of enemies encountered.



## Deathmatch

All players are competing against each other to gain the high score by eliminating the most opponents.

Kill Friendly -4

Killed by opponent 0

Kill opponent with a

Kill opponent using

Kill yourself -1

Kill opponent +1

head shot +2

only a knife +3

## King of the Hill

In this scenario, players win by occupying a certain area for a specific duration of time (set by the game host). The hot zone shows up as a red circle on your GPS map. Although your time in the zone is cumulative, leaving the hot zone will cause your timer to start to count backwards. The size and number of hot zones will vary depending on which map the host chooses.

## Capture the Flag

Flags are represented by a triangle symbol on the GPS and Command map. You are part of the red team or the blue team and your objective is to grab the other team's flag by running over it and return it to your team's Flag Bay (represented by a colored circle). At the same time, you need to defend your own flags from your opponents. Some variations have multiple flags that must be retrieved. The waypoint indicator will help guide you to the flags and back to your flag bay.

## Team preference

If the host allows it, you can choose which team to join.

## **MULTIPLAYER HOSTING GAME OPTIONS**

The host of a multiplayer game will be able to set several different options to determine how the game functions.

**Server Type:** select “Server Only” if you are not going to play in the game on this computer.

**Max Player:** determines the maximum number of players allowed to join the multiplayer game.

**Team Selection:** “Server Chooses” will override the individual player’s choice of sides and make teams even.

**Score Limit:** determines what score must be attained before the game ends and a winner is declared.

**Time Limit:** determines how long a game will last.

**King of the Hill Time:** determines the total cumulative amount of time a player must occupy the hot zone in order to win a King of the Hill game.

**See Team On GPS:** select “Yes” if you want members of the same team to be able to see icons representing the location of their teammates on the GPS map.

**Tracers:** select “Off” if you don’t want any player to see the bullet trail from fired weapons.

**Friendly Fire Warning:** select “Off” to remove the safety X that appears when targeting allies for all players.

**Allow Friendly Fire:** you have the option of making your teammates invulnerable to your weapons by turning Allow Friendly Fire “off”

**Allow Team Tags:** Having this option “off” will not allow players to use Friendly Tags.

# CREDITS

---

## **DeltaForce**

### **Programmed by**

Daniele Gaetano

### **Menu Programming**

Vu Truong

### **Character Animation System**

Mark Davis

### **Additional Programming**

Randy Casey

Kyle Freeman

David King

Jim Ratcliff

### **NovaWorld Programming**

John Bojorquez

### **Executive Producer**

John Garcia

### **Producer**

Wes Eckhart

### **Project Management**

David Seeholzer

### **Technical Management**

John Butrovich

### **Associate Producer**

Nigel Mills

### **Mission Design Manager**

Alicia Taylor

### **Senior Mission Designer**

Mat Jennings

### **Mission Design**

Dan Chang

Keith Butler

Jay C. Boone

Steve McNally

David Merrick

Todd Owens

Kevin White

### **Art Director**

Keith Rust

### **Art**

Troy Adam

Lou Garcia

Tim Higgins

Craig Marschke

Mike Maza

Rod Parong

Keith Rust

Chris Tamburrino

Jon Tando

Jason Tull

### **Motion Capture Animation**

Rod Parong

Dean Fowler

### **Animation**

Dean Fowler

### **Digital Video Processing**

Daryl Kimoto

### **Audio Director**

Tom Hays

### **Sound Design and Dialog Editing**

Richard Adrian

Tom Hays

### **Music Composed by**

Tom Hays

Alan Koshiyama

### **Voices**

Hany Attia

Rory J. Aylward

Yevgeniy "Jim" Blekherman

Erwin Darmali

Julio C. Diaz Jr.

Henry W. Fayson Jr.

SGT Oscar Galvin USMC

Bryce C. Garcia

Michael Glukhov

Ramy Hakim

Robert Brent Lappin

Chris Lauw

Malik Mourad

Kathy Olson

Tonatiuh M. Pacheco

Jacqui Sentmanat

Arthur "Russo" Stein

Jamie Tardif

Alicia Taylor

Max Walla

**Dialog Editing**

Joe Shands  
Caron Weidner

**Dialog Recorded at N.S.I**

Burbank, CA

**Manual**

Kevin R. O'Hara

**Manual/Packaging  
Layout and Design**

Ulises Gerardo

**Cover Art**

Hamagami/Carroll

**Technical Consulting**

Jeff Beatty

**QA Management**

Jeff Moore

**Lead QA**

Tony Kotelenets

**Project QA Lead**

Ron Amaral

**Quality Assurance**

Brian Bekian  
Jason Bender  
Seth Christian  
Daniel Constant  
Tony Kotelenets  
Ron De Los Santos  
John Graham  
Chris Lauw  
Jeremiah Maza  
Douglas Rothman

**Computer Maintenance**

Glenn Kronick

**Motion Capture**

House of Moves

**Motion Capture  
Storyboard Artist**

Ivan Cat

**Motion Capture Producer**

Jarrod Phillips

**Line Producer**

Rosa Cays

**Motion Capture Supervisor**

James Scanlon

**Senior Motion  
Capture Editor**

Damon Knight

**Motion Capture Technician**

Jonny Ravena

**Motion Capture Performer**

Ted Smith

**Production Manager**

Chris Bellaci

**Special Thanks**

Silvana Dulling  
Kris Kraves  
James Lamorticelli  
Jackie Lay  
Lee Milligan  
Lisa Nielsen  
Dorothy Peters  
David Pollack  
Matt Ruhl  
James Spice  
Tara Stivers  
Rozita Tolouey  
Paul Walkden  
Jennie Wyatt  
Karly Young

Special Thanks to the U.S. Marine Corps, U.S. Marine Corps Public Affairs Office, Los Angeles California, United States Border Patrol Fire Arms Training Facility  
Marine Corps Personnel at Camp Pendleton, California.

We gratefully acknowledge the cooperation of the Department of Defense, the Department of the Army, and specifically Office of the Chief of Public Affairs, Los Angeles Branch; Advertising and Public Affairs Directorate, U.S. Army Recruiting Command, Fort Knox, Kentucky; Public Affairs Office; U.S. Army Special Operations Command (Airborne), Fort Bragg, North Carolina; Public Affairs Office, U.S. Army Special Forces Command (Airborne), Fort Bragg, North Carolina.

## **TECHNICAL SUPPORT**

---

The entire staff at NovaLogic, Inc. thanks you for purchasing Delta Force. NovaLogic is committed to creating quality entertainment software that pushes the technological envelope. NovaLogic's technical support staff is ready to assist you.

**Internet Website:** <http://www.novalogic.com>

Visit the NovaLogic website for up-to-the-minute information, frequently asked questions, game updates, previews of upcoming products and screen shots as well as the latest on NovaWorld, our large-scale multiplayer gaming service.

**Email Support Address:** [support@novalogic.com](mailto:support@novalogic.com)

You may also email your questions and comments to a member of technical support at any time. To better assist you, please detail your hardware set-up and be as specific as possible regarding any problems you may be experiencing.

**Technical Support Line: (818) 878-0325**

If you need to speak to someone directly, our technical support staff can be reached during normal business hours (Monday through Friday 9AM to 5PM Pacific Standard Time). To better assist you, the technical support staff member is likely to ask questions regarding your specific hardware set-up. Have this information handy. Also, be prepared to explain the exact nature of any problems you are experiencing. For example, write down the exact wording of any on-screen error messages you may be receiving.

**Fax Support Line: (818) 880-3448**

You may fax your questions or comments to a member of technical support at any time, day or night. Be as specific as possible regarding your hardware setup and any problems you may be experiencing.

**NovaLogic's Limited Ninety-Day Warranty and License Provisions**

**IMPORTANT:** By breaking the seal on the software, you agree to be irrevocably bound to the following terms and conditions. If you do not wish to be bound, promptly return this product in its entirety with the software seal intact and proof of purchase to NovaLogic, Inc., 26010 Mureau Road, Suite 200, Calabasas, California 91302, and a full refund will be made.

**Limited Warranty on Media**

NovaLogic, Inc. ("NovaLogic") warrants the compact disc on which this product is recorded to be free from reasonable defects in materials and workmanship under normal use for a period of ninety (90) days from the date of purchase as evidenced by a copy of your proof of purchase. NovaLogic's entire liability and your exclusive remedy in the event of such defect will be replacement of the compact disc not meeting NovaLogic's limited warranty and which is returned to NovaLogic with a copy of your proof of purchase. NovaLogic will have no responsibility to replace any such compact disc damaged by accident, abuse or misapplication. This policy applies to the initial purchase only.

ANY IMPLIED WARRANTIES ON THE COMPACT DISC, INCLUDING THE IMPLIED WARRANTIES OF MERCHANTABILITY AND FITNESS FOR A PARTICULAR PURPOSE, ARE LIMITED IN DURATION TO NINETY (90) DAYS FROM THE DATE OF DELIVERY. THIS WARRANTY GIVES YOU SPECIFIC LEGAL RIGHTS, AND YOU MAY ALSO HAVE OTHER RIGHTS WHICH VARY BY JURISDICTION.

If you and the NovaLogic Tech Support Staff believe you have found any such error or defect during the warranty period please return the defective compact disc together with a dated proof of purchase to NovaLogic, Inc., 26010 Mureau Road, Suite 200, Calabasas, California 91302, for a free replacement.

**Disclaimer of Warranty on Product**

YOU EXPRESSLY ACKNOWLEDGE AND AGREE THAT USE OF THIS PRODUCT IS AT YOUR SOLE RISK. THIS PRODUCT AND RELATED DOCUMENTATION ARE PROVIDED "AS IS" AND WITHOUT WARRANTY OF ANY KIND AND NOVALOGIC EXPRESSLY DISCLAIMS ALL WARRANTIES, EXPRESS OR IMPLIED, INCLUDING, BUT NOT LIMITED TO, THE IMPLIED WARRANTIES OF MERCHANTABILITY AND FITNESS FOR A PARTICULAR PURPOSE. UNAUTHORIZED REPRESENTATIONS: NOVALOGIC WARRANTS ONLY THAT THE PROGRAM WILL PERFORM AS DESCRIBED IN THE USER DOCUMENTATION. NO ADVERTISING, DESCRIPTION OR REPRESENTATION, WHETHER MADE BY A NOVALOGIC DEALER, DISTRIBUTOR, AGENT OR EMPLOYEE, SHALL BE BINDING UPON NOVALOGIC OR SHALL CHANGE THE TERMS OF THIS DISCLAIMER OR THE LIMITED WARRANTY ON MEDIA SET FORTH ABOVE. NOVALOGIC DOES NOT WARRANT THAT THE FUNCTIONS CONTAINED IN THE NOVALOGIC PRODUCT WILL MEET YOUR REQUIREMENTS, OR THAT THE OPERATION OF THE NOVALOGIC PRODUCT WILL BE UNINTERRUPTED OR ERROR-FREE, OR THAT DEFECTS IN THE PRODUCT WILL BE CORRECTED. FURTHERMORE NOVALOGIC DOES NOT WARRANT OR MAKE ANY REPRESENTATIONS REGARDING THE USE OR THE RESULTS OF THE USE OF THE PRODUCT OR RELATED DOCUMENTATION IN TERMS OF THEIR CORRECTNESS, ACCURACY, RELIABILITY, OR OTHERWISE. NO ORAL OR WRITTEN INFORMATION OR ADVICE GIVEN BY NOVALOGIC OR NOVALOGIC'S AUTHORIZED REPRESENTATIVE SHALL CREATE A WARRANTY OR IN ANY WAY INCREASE THE SCOPE OF THIS WARRANTY. SHOULD THE PRODUCT PROVE DEFECTIVE, YOU (AND NOT NOVALOGIC) ASSUME THE ENTIRE COST OF ALL NECESSARY SERVICING, REPAIR OR CORRECTION. SOME JURISDICTIONS DO NOT ALLOW THE EXCLUSION OF IMPLIED WARRANTIES, SO THE ABOVE EXCLUSION MAY NOT APPLY TO YOU.

NO CONSEQUENTIAL DAMAGES: NOVALOGIC SHALL NOT BE LIABLE FOR SPECIAL, INCIDENTAL, CONSEQUENTIAL OR OTHER DAMAGES, EVEN IF NOVALOGIC IS ADVISED OF OR AWARE OF THE POSSIBILITY OF SUCH DAMAGES. THIS MEANS THAT NOVALOGIC SHALL NOT BE RESPONSIBLE OR LIABLE FOR LOST PROFITS OR REVENUES, OR FOR DAMAGES OR COSTS INCURRED AS A RESULT OF LOSS OF TIME, DATA OR USE OF THE SOFTWARE, OR FROM ANY OTHER CAUSE EXCEPT THE ACTUAL COST OF THE PRODUCT. IN NO EVENT SHALL NOVALOGIC'S LIABILITY EXCEED THE PURCHASE PRICE OF THIS PRODUCT. SOME STATES DO NOT ALLOW THE EXCLUSION OR LIMITATION OF INCIDENTAL OR CONSEQUENTIAL DAMAGES, SO THE ABOVE LIMITATION OR EXCLUSION MAY NOT APPLY TO YOU.

#### License

NovaLogic grants you a nonexclusive, nontransferable license as follows. You are entitled to use this product for your own use, but may not make (except for backup), sell or transfer reproductions of the software or manual to other parties in any way, nor rent, lease, or preview the product to others without the prior written permission of NovaLogic. You may use one copy of the product on a single terminal connected to one particular computer. You are entitled to install and use the multiplayer-only component of this product on multiple computers. You may not reverse engineer, disassemble, or translate the product.

For technical support, call 818/878-0325, or visit our website: <http://www.novalogic.com>

©1998 NovaLogic, Inc. Voxel Space, NovaLogic and the NovaLogic logo are registered trademarks and NovaWorld, Delta Force are trademarks of NovaLogic, Inc. SurroundSound decoding hardware required for Dolby SurroundSound, Dolby and the double-D symbol are trademarks of Dolby Laboratories. Windows is a registered trademark of Microsoft Corporation. Intel and Pentium are registered trademarks and MMX is a trademark of Intel Corporation. EarthLink is a registered trademark of EarthLink Network, Inc. All other trademarks are the property of their respective owners.

U.S. Patent #'s 5,625,759 and 5,550,959. Printed and manufactured in the U.S.A.



PIN: 9732-1500