

CYBER WORLD

© 1990 SOFTGOLD and micro-partner

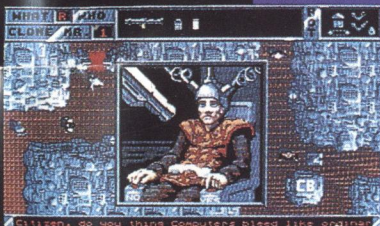
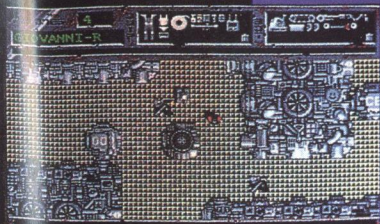
"The P.C." ist die revolutionäre Simulation eines Elektro-
nengehirns. Es hat die Kontrolle über eine unterirdische
mehrstöckige Metropole. Und Du bist der "glückliche" Bür-
ger, der Freund Computer dienen darf. PREIST DEN COM-
PUTER! Du bist berufen, Verräter zu jagen und zu paraly-
sieren. Käufliches Equipment verschafft Dir einen Job mit
Komfort. DANKT DEM COMPUTER! Aber sei effektiv, denn
es zahlt sich aus... doch VERSAGEN IST VERRAT!?



"The P.C." is a very different kind of simulator. An elec-
tronic brain that governs a multi-storey underground me-
tropolis and you are it's "Loyal Citizen" happy to serve
FRIEND COMPUTER to the bitter end. Your duty it is,
both to detect and immobilise non-cooperative traitors. Be
sure your stores of equipment are kept up to date tho',
for efficiency pays, where-by anything less is treason...
high treason. ALL HAIL TO THE COMPUTER!!



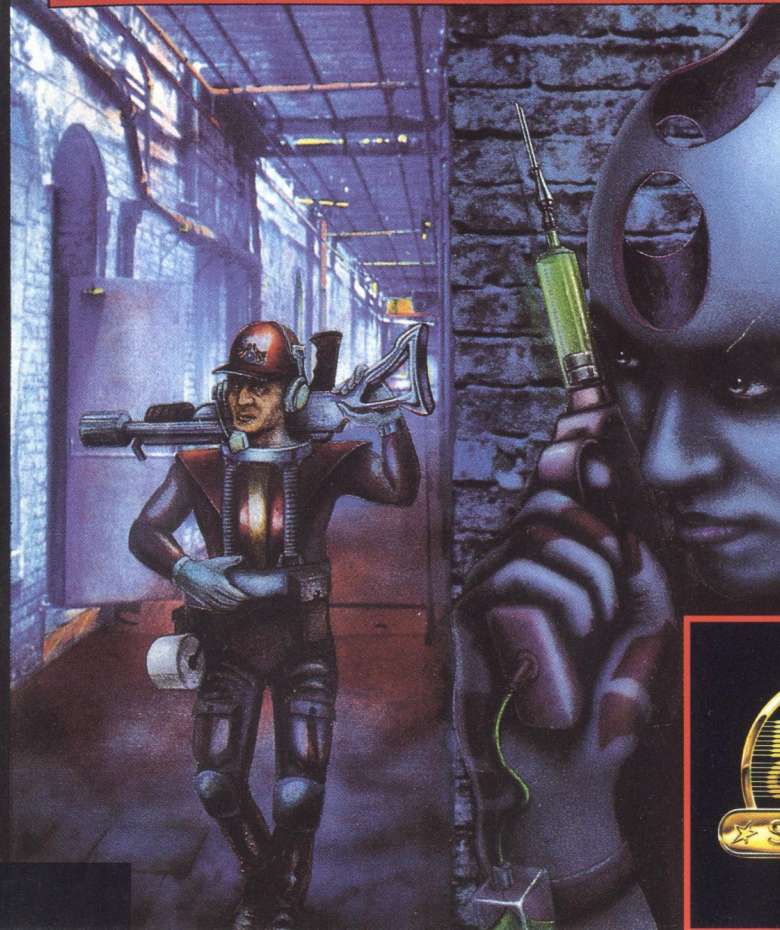
"Le P.C." est un simulateur révolutionnaire! C'est un cer-
veau électronique qui règne en maître sur une gigantes-
que métropole souterraine dont tu es l'heureux citoyen à qui
revient le devoir de le servir. REMERCIE L'ORDINATEUR!
Tu devras chasser et pétrifier les dissidents du système. Et
surtout veille à t'assurer l'équipement nécessaire car autant
l'efficacité rapporte autant ECHOUER C'EST TRAHIR!
VENERE LE MAITRE!



Atari



CYBER WORLD



Cyberworld

Loading instructions

Amiga: Insert the program disk into drive DF0 when the workbench is Requested.

C64 disk: Type LOAD"-:8,1 and press the RETURN key.

C64 cassette: Rewind the tape to the beginning. Press the SHIFT and RUN/STOP keys simultaneously. Press the PLAY key on your datarecorder.

Your Mission:

Your aim is to paralyze opponents and obtain information from them.

Multi Function Screen On the lower half of the screen, you will see your location in the city. In the upper half you see the control indicators.

Two huge windows at the right side show your and the robot's equipment. The bin is for unused equipment. In the left upper corner, you see the remaining lives. Below that, your name and the abbreviation of your security level.

Control:

- All joystick directions — You move into the appropriate direction
- Firebutton — Shot (if you own a weapon)

You can examine paralyzed citizens by standing on them and pressing the joystick button. You can also take away equipment. Equipment is displayed either in your window or in the robot's. You get there by pressing the SPACEBAR. With Joystick left/right you select the various bits and pieces. You get them pressing the firebutton. To move from one window to the other, move the joystick up or down. Push the SPACEBAR to leave the window.

Equipment:

- Weapons The simplest weapon is the PICK. It's a part of your basic equipment. Better weapons have a higher range. GAGA uses different ammunition.
- SURVIVAL Basics: for example. MIST, DEAR, LEPER, FCA
- EXTRAS Protect you from other weapons, special abilities etc.
- R3D Equipment for your BOT.

Buy yourself a communicator (COMM). When Friend Computer calls you, you should operate it in the QUIP field only. Only then can you will receive your orders.

Game elements:

- Terminal: Link to Friend Computer.
1. You will receive your commands
 2. Shopping — Select with the firebutton, leave with EXIT or RETURN
 3. Food Card Programming
 4. Account statement
 5. LOAD R3D — Load roboter
 6. Log OFF — Terminate link with Friend Computer

Toilets: ...better use toilet paper

Hot Chair (CB): You will be asked 3 questions. Accept answer with joystick left or refuse with joystick right.

Elevator: Indicated by a square inside a square. Travel to different levels.

Air Pressure Transport System: Use it when you have a R3D or an APTS connection.