



© 1990 Mirrorsoft Limited, © 1989 UCS + AMBLIN
Image Works, Irwin House, 118 Southwark Street, London SE1 0SW
Tel: 071 928 1454 Fax: 071 583 3494

"GREAT ESCAPES" - WEEKEND BREAK PROMOTION

Watch out! Over the next 10 months Mirrorsoft will be including 15 of it's forthcoming releases on Amiga, ST & PC in it's exclusive "Great Escapes" promotion.

All 15 titles have a token attached to the back page of the manual. (Like the one below)

Once 5 have been collected you receive your "Great Escapes" directory giving details of over 200 hotels in and around the UK, along with a voucher entitling you & a partner to two nights free accommodation (the prices of meals being clearly stated in the directory before you book).

You then call our "Great Escapes" hotline and let us organize it all for you.

UK RESIDENTS ONLY

Please call 061 727 8363 to get your free directory and further details.



TM

ENGLISH/FRANCAIS/DEUTSCH/
ITALIANO/ESPAÑOL/NEDERLANDS



~ GREAT ESCAPES ~
HOLIDAY ACCOMMODATION
VOUCHER



Save these vouchers to qualify for your holiday accommodation
for 2 people—you just pay for the meals. bttf II

For full details, terms and conditions of the
accommodation offered please ask to see
the full colour brochure this offer relates to.

Redemption value 0000p
NO. GE198751
UK ONLY



© 1990 Mirrorsoft Limited, © 1989 UCS + AMBLIN

Image Works, Irwin House, 118 Southwark Street, London SE1 OSW

Tel: 071 928 1454 Fax: 071 583 3494

This computer program and its associated documentation and materials are protected by both National and International Copyright Law. Storage in a retrieval system, reproduction, translation, hiring, lending, broadcasting and public performances are prohibited without the express written permission of Mirrorsoft Limited.

PEPSI and PEPSI-COLA are registered trademarks used with the permission of PepsiCo Inc.

CREDITS

BACK TO THE FUTURE PART II

was designed and programmed by

Images Limited.

The music was written and performed by David Whittaker.

The manual was written by Gary Whitta.

Should you experience any loading problems with this product, please pop the disk **ONLY** (hang on to the packaging and documentation) into some sturdy packaging and send it to: Department BTF, Image Works, Irwin House, 118 Southwark Street, London SE1 OSW along with a brief description of the problem. We will endeavour to provide you with a replacement within 28 days of receiving your faulty disk. This in no way affects your statutory rights.

LOADING

ATARI ST

Insert the disk into the internal drive and power up the machine. The game will now load and run. Owners of single sided disk drives should return the disk to us for up-grading: send to BTTF2 Upgrade, Image Works, Irwin House, 118 Southwark Street, London SE1 OSW.

AMIGA

Power up the machine, and when the Workbench prompt appears, insert the disk into the internal drive and the game will load and run.

SPECTRUM CASSETTE

Insert the cassette into the player and type LOAD " ". The game will load and run.

SPECTRUM +3 DISK

Insert the disk into the drive and select LOADER from the on-screen menu. The game will load and run.

COMMODORE 64 CASSETTE

Insert the cassette into the player. Hold down SHIFT and press RUN/STOP. Press play, and the game will load and run.

COMMODORE 64 DISK

Insert the disk into the drive and type LOAD "*", 8, 1. The game will load and run.



COMMODORE 128

Type GO64 then press RETURN. Type Y when prompted, followed by RETURN, then follow the appropriate Commodore 64 instructions.

AMSTRAD CPC CASSETTE

Insert the cassette into the player. Hold down CONTROL and press ENTER on the numeric keypad. The game will now load and run.

AMSTRAD CPC DISK

Insert the disk into the drive and type RUN " " DISK. The game will load and run.

IBM PC + COMPATIBLES

Insert Disk 1 into drive A: of your system and then type "A:" followed by RETURN, and then type "BTTF2" again followed by RETURN. The program will now load and run.

CASSETTE VERSIONS PLEASE NOTE: Due to this program being of several different parts it will be necessary for you to stop and start the cassette as instructed on screen by your computer.

CONTROLS

The Atari ST and Commodore 64 versions are controlled by joystick only. The Commodore Amiga version can be controlled by either Joystick or Mouse. The IBM PC, Spectrum and Amstrad versions can be controlled by joystick and also have a redefinable keyboard option.

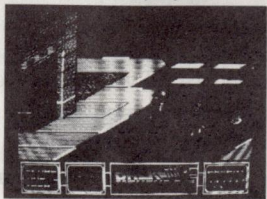
Refer to the on-screen instructions for more details.

HERE'S WHERE YOU COME IN

Returning from the year 2015 on an innocent sightseeing tour, Doc has some very bad news for Marty. Unless he goes back to the future with him in order to change the course of history, the future of his family could be in danger. Now it's up to him - or rather you - to put things right.

BACK TO THE FUTURE PART II is not just one game - it's five separate games that each tell a chapter of the story, with you as the lead character, Marty McFly. If you've seen the movie you're bound to have some advantage as each of the levels is based directly on a specific scene from the film, but ultimately only quick reflexes and an even quicker mind will see you through safely. It's up to you now. Think about the future

The object is to race through Hill Valley, and make it safely to the Town Hall, thus preventing a future disaster for your son. Your hoverboard is a pretty nippy mover, but you'll have to move fast to avoid Griff and his gang. A typical screen display looks like this:



As you can see the screen is divided into two areas. The larger portion at the top is the game area, while the lower section is the status area, which appears throughout the game. The status area displays everything you need to know, relevant to the current level, including the year you're currently in (in this case, 2015), your energy level (you start with a full bar, and this is depleted along the way), number of lives remaining and the time remaining, and your score.

CONTROLS

You control your movement on screen by use of the input device (keyboard, mouse, or joystick). To move around, steer yourself in the direction you wish to go. To accelerate push the device forwards, and to brake, pull backwards. You can punch on-coming attackers by tapping the select button but by holding it down, you will be able to jump over obstacles such as manholes, gratings, puddles of water and kerbs.

Your mission on this level is to get Jennifer out of the house without her bumping into any of its computer-controlled occupants, since this would not only cause severe damage to Jennifer's nervous system but also to the fabric of time itself.

You view your home of the future from above and, as you will see, Jennifer is in there along with 2 or 3 other occupants. Getting her out sounds simple but it's far from easy seeing as you don't actually control Jennifer directly. You're presented with an eight-directional pointer. By

moving the directional pointer in any one of its directions, you will flash two of the available doors. By using the SELECT button you can open the selected doors. When the doors have been opened the occupants of the connecting rooms will move from one to the other.



All you have to do is get Jennifer safely out of the house's exit door without bumping into any of the future family. It's basically a logic puzzle so there are plenty of times when you'll have to sit back and think hard about where to move next. The key to success lies in not just watching Jennifer's movements but also the movements of the future family. Memorise which directions open which doors, and bear in mind that you are actually controlling the movements of the future family indirectly (in the same way that you're controlling Jennifer). It's a little like chess in the sense that you'll often have to look two or three moves ahead in order to keep on top of things, so a little forethought wouldn't go amiss. Good luck

Working out what has gone wrong with the time flow and correcting it may be the first thing on your mind but before you can do that, you've got to get back to the DeLorean alive - and with 1985 in the state it's in it's not easy!

This level is a right-to-left scrolling combat game where the objective is to battle your way through Hill Valley and reach the DeLorean. In each of these areas you'll come up against a variety of undesirable



local residents who are all out to get you - these are not nice people. To defend yourself you have a simple array of combat moves at your disposal (you may want more but remember, Marty is not Bruce Lee). The moves are as follows...

The walking left and right, crouching and jumping bit is pretty obvious, but kicking and punching is a little more complicated. Each combat move is slightly different (as you'll see when you play the game) and will therefore have a different effect on its victim - this also depends on exactly who you're trying to beat up.

Like the second level, this level is a logic puzzle, although this time you're more likely to be familiar with it. It's based on the 'sliding block' pocket puzzles where the idea is to slide the tiles in the correct order to make a complete picture.

In this game the picture you're presented with is an animated one of Marty playing guitar at the dance. Or at least it would be if the tiles that make up the picture weren't horribly scrambled. Your job is to slide the tiles into the correct order to complete the picture before the time limit expires.

Moving blocks is easy - making the picture isn't. You'll see that one space in the tile grid is always empty and this is the space that you can slide tiles into. Just select a tile, and move it into the relevant direction to fill the space - and create a new one. Once the picture is complete, you can proceed.

Like the second level, the logic of this puzzle means you'll always have to look two or three moves ahead if you're to get anywhere.



LEVEL FIVE

Still in 1955, Marty has followed Biff from the Enchantment Under The Sea dance and is hotly pursuing his car through Hill Valley on his hoverboard (which he brought back from 2015). Biff still has the Almanac, and to stop time from going askew, Marty must retrieve it before Biff reaches his destination.

As before you have various enemies to contend with, including both you and old Biff, Biff's henchmen and the Hill Valley police - fortunately you can fight them off as before. You can also, as before, collect objects along the way for extra energy, points and power-ups (see LEVEL ONE for details).

Don't forget to grab hold of the Almanac before Biff or anyone else gets you. Your future depends on it.

END GAME

Even if you manage to complete BACK TO THE FUTURE PART II, the adventure is far from over, as the game's end sequence will reveal. There's still one more chapter to go...

**Watch out for
BACK TO THE FUTURE PART III
from Image Works.**